

PARCEL MAP No 32-48

A DIVISION OF A PORTION OF THE SE 1/4, SEC 29, T5N, R25E, MDB & M, MONO COUNTY, CALIFORNIA.

FOUND FENCE CORNER.
PROBABLE V4 SECTION
CORNER PER RSMB
2/132. SET TAG LS5149
IN POST. MEASUREMENT
TAKEN TO TACK IN TAG.

NOTE: RSMB 2/132 RECORD INFORMATION IS
BASED ON THE CALIFORNIA COORDINATE SYSTEM
ZONE III, NAD 83. REFERENCES TO RSMB 2/132
ARE GIVEN ON THIS MAP IN GRID BEARINGS
AND GROUND DISTANCES. GRID DISTANCE =
GROUND DISTANCE x COMBINED GRID FACTOR.
COMBINED GRID FACTOR = 0.9996777 PER
RSMB 2/132.

SECTION CORNER 20121
29128
ESTABLISHED BY DOUBLE
PROPORTION. NOTHING SET.

FOUND 4"x4" POST WITH
ILLEGIBLE SIGNS IN 3'
DIAMETER ROCK MOUND.
ACCEPTED AS 1/4 SECTION
CORNER 819 PER USSGO
1856 SURVEY, RSMB 1/19
& RSMB 1/71. MEASUREMENT
TAKEN TO NAIL IN TOP OF
POST.

FOUND 1/2" DIAMETER REBAR
IN 3' DIAMETER ROCK MOUND.
ACCEPTED AS SECTION
CORNER 2122 PER USSGO
1878 SURVEY, RSMB 1/19 &
RSMB 1/71.

S23°33'18"W 66.66'm
N0°10'06"W 2657.82'm
(N0°55'01"W 2657.31'r RSMB 2/132)
N0°10'06"W 2619.81'm
(N0°55'01"W 2619.31'r RSMB 2/132)

SECTION CORNER 24119
25130
ROCK MOUND PER
RSMB 1/19 & RSMB 1/71
NOT FOUND.

N89°43'32"E 10541.12'm
(N89°28'20"E 10561.17'r RSMB 1/71)

10541.00'm (159.52 CHS r)
N89°56'15"E 15823.40'm (239.46 CHS r)

N89°38'32"W 5282.50'm
(S89°35'19"E 5292.39'r RSMB 1/71)

5282.40'm (79.74 CHS r)
USSGO 1856 SURVEY

SET 1 1/2" DIAMETER
ALUMINUM CAP
INSCRIBED LS5149
ON 5/8" DIAMETER
REFERENCE POINT
AT ANGLE POINT
IN FENCE.

FOUND 3/4" ALUMINUM
CAP INSCRIBED JAMES NICKLOS LS3848
WC
T5N
R24E R25E
S24 S19
S25 S30
1992

ON 2 1/2" DIAMETER ALUMINUM PIPE IN
2 1/2" DIAMETER ROCK MOUND. ACCEPTED
AS WITNESS CORNER PER RSMB 2/132.

SINGLE PROPORTION DETAIL

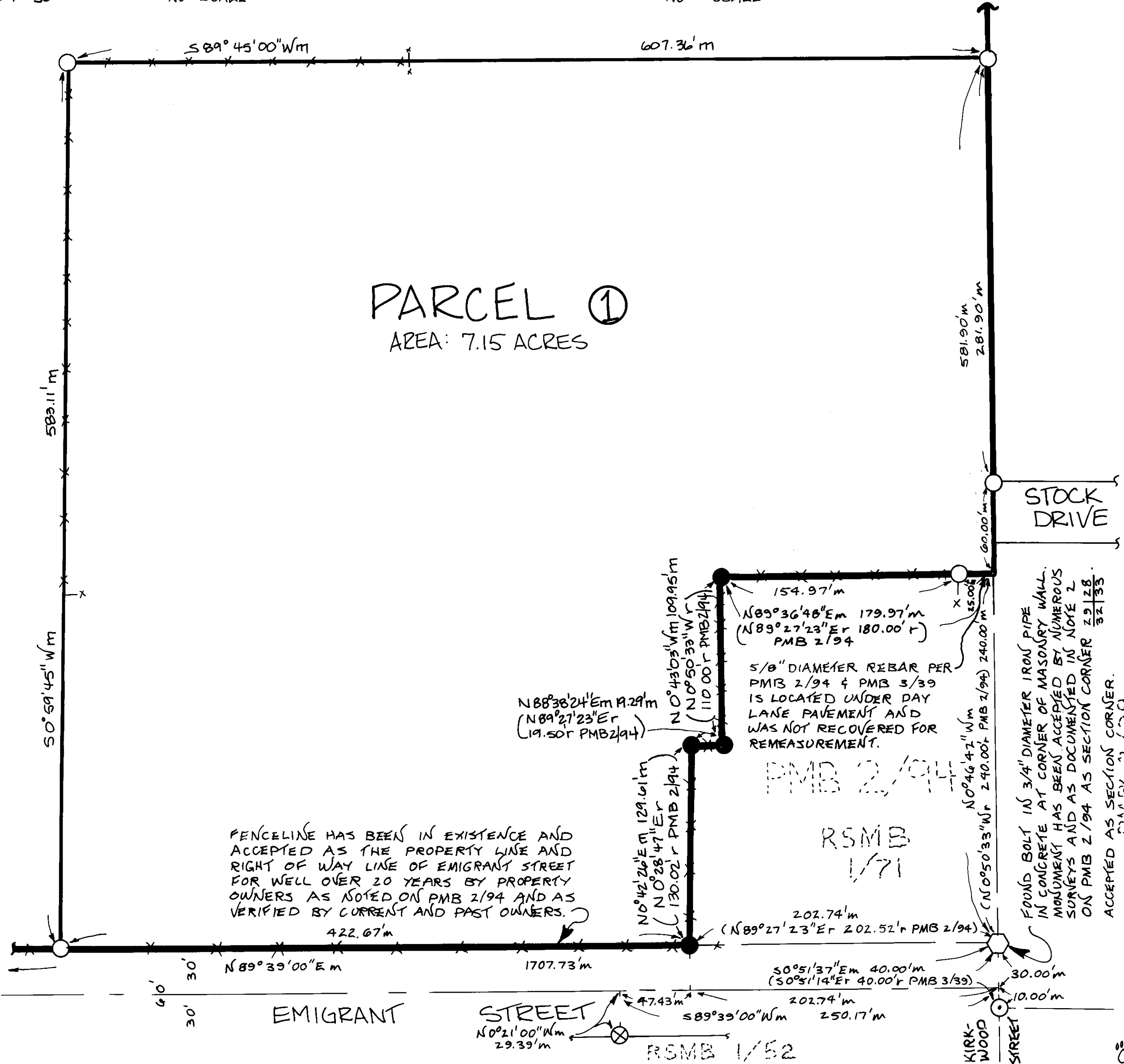
DOUBLE PROPORTION DETAIL

SCALE: 1"=50'

NO SCALE

NO SCALE

PARCEL ①
AREA: 7.15 ACRES



FENCELINE HAS BEEN IN EXISTENCE AND
ACCEPTED AS THE PROPERTY LINE AND
RIGHT OF WAY LINE OF EMIGRANT STREET
FOR WELL OVER 20 YEARS BY PROPERTY
OWNERS AS NOTED ON PMB 2/94 AND AS
VERIFIED BY CURRENT AND PAST OWNERS.

5/8" DIAMETER REBAR PER
PMB 2/94 & PMB 3/39
IS LOCATED UNDER DAY
LANE PAVEMENT AND
WAS NOT RECOVERED FOR
REMEASUREMENT.

FOUND BOLT IN 3/4" DIAMETER IRON PIPE
IN CONCRETE AT CORNER OF MASONRY WALL.
MONUMENT HAS BEEN ACCEPTED BY NUMEROUS
SURVEYS AND AS DOCUMENTED IN NOTE 2
ON PMB 2/94 AS SECTION CORNER 29128.
ACCEPTED AS SECTION CORNER.
DATE: 2/13/03

P.M.
1/4 4 18 28-13