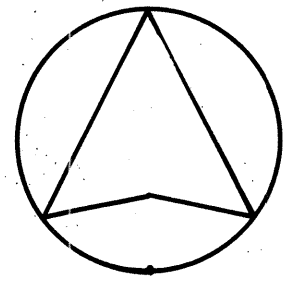


TRACT 2061

LIVERMORE, ALAMEDA COUNTY,
CALIFORNIA

JULY 1959
GILBERT A. FITCH CIVIL ENGINEER
LIVERMORE CALIFORNIA

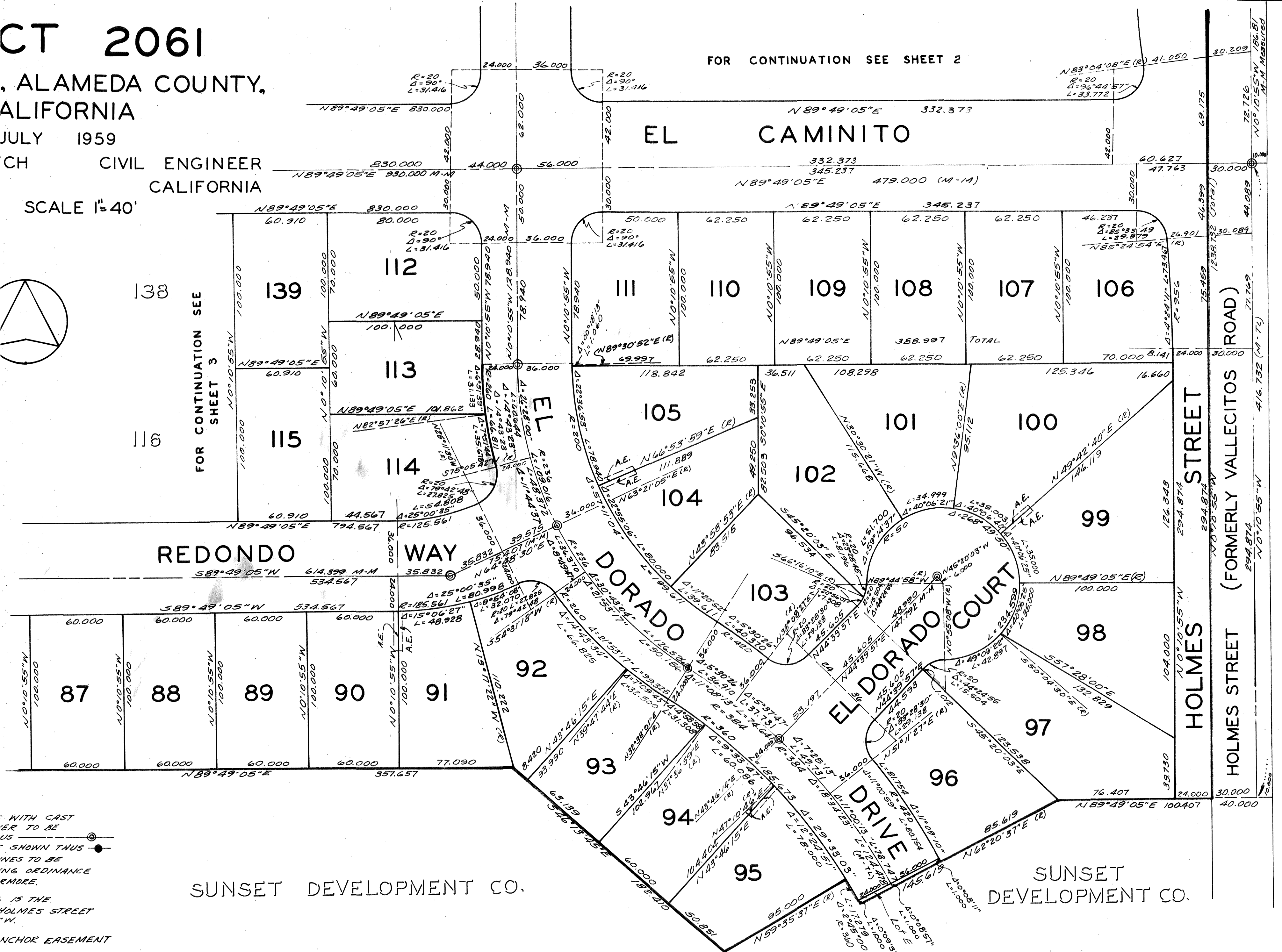
SCALE 1" = 40'




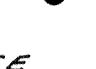
FOR CONTINUATION
SEE SHEET 4

FOR CONTINUATION
SEE SHEET 3

FOR CONTINUATION SEE SHEET 2



LEGEND

CONCRETE MONUMENTS WITH CAST
IRON FRAMES AND COVER TO BE
INSTALLED SHOWN THUS 
EXISTING MONUMENTS SHOWN THUS 
BUILDING SETBACK LINES TO BE
REQUIRED BY THE ZONING ORDINANCE
OF THE CITY OF LIVERMORE.

THE BASIS OF BEARING IS THE
MONUMENT LINE OF HOLMES STREET
TAKEN AS N 0° 10' 55" W.

ANCHOR EASEMENT

TR.
2061

AQ 100069

SHEET 5 OF 5 SHEETS