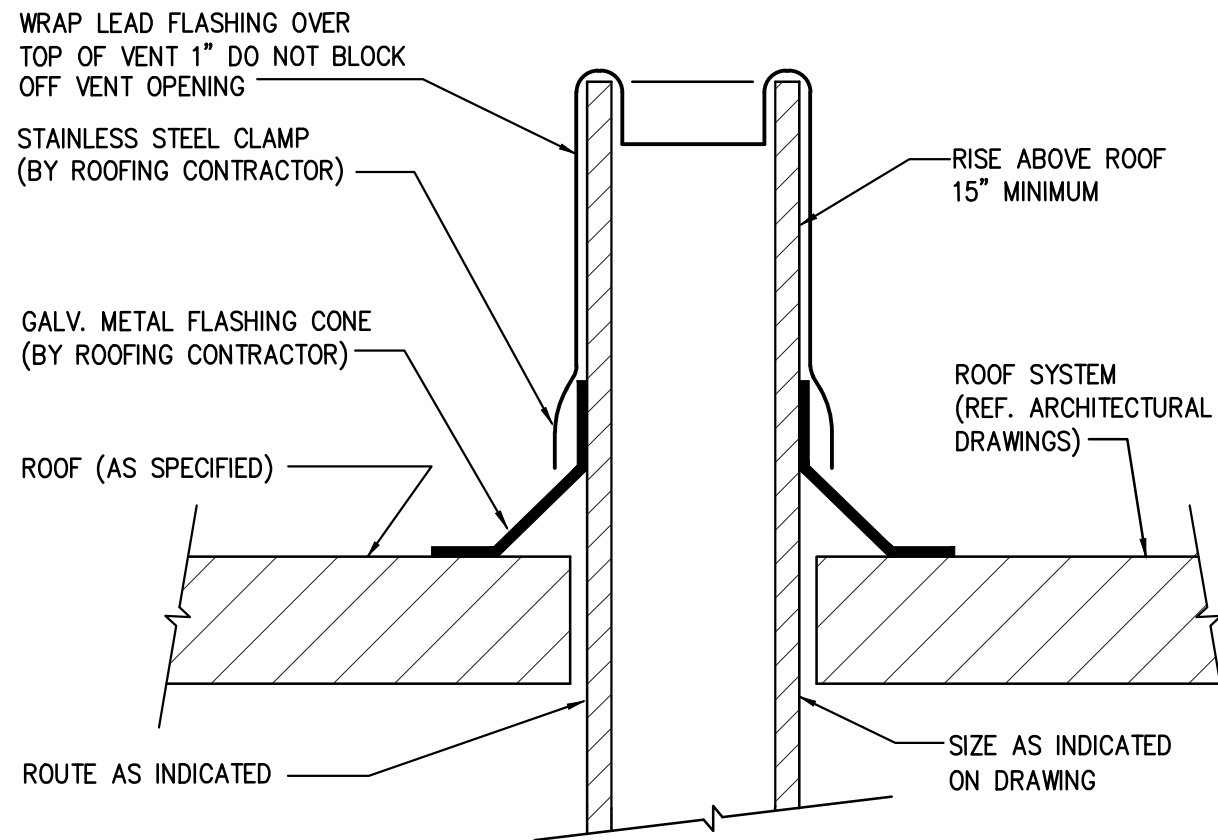


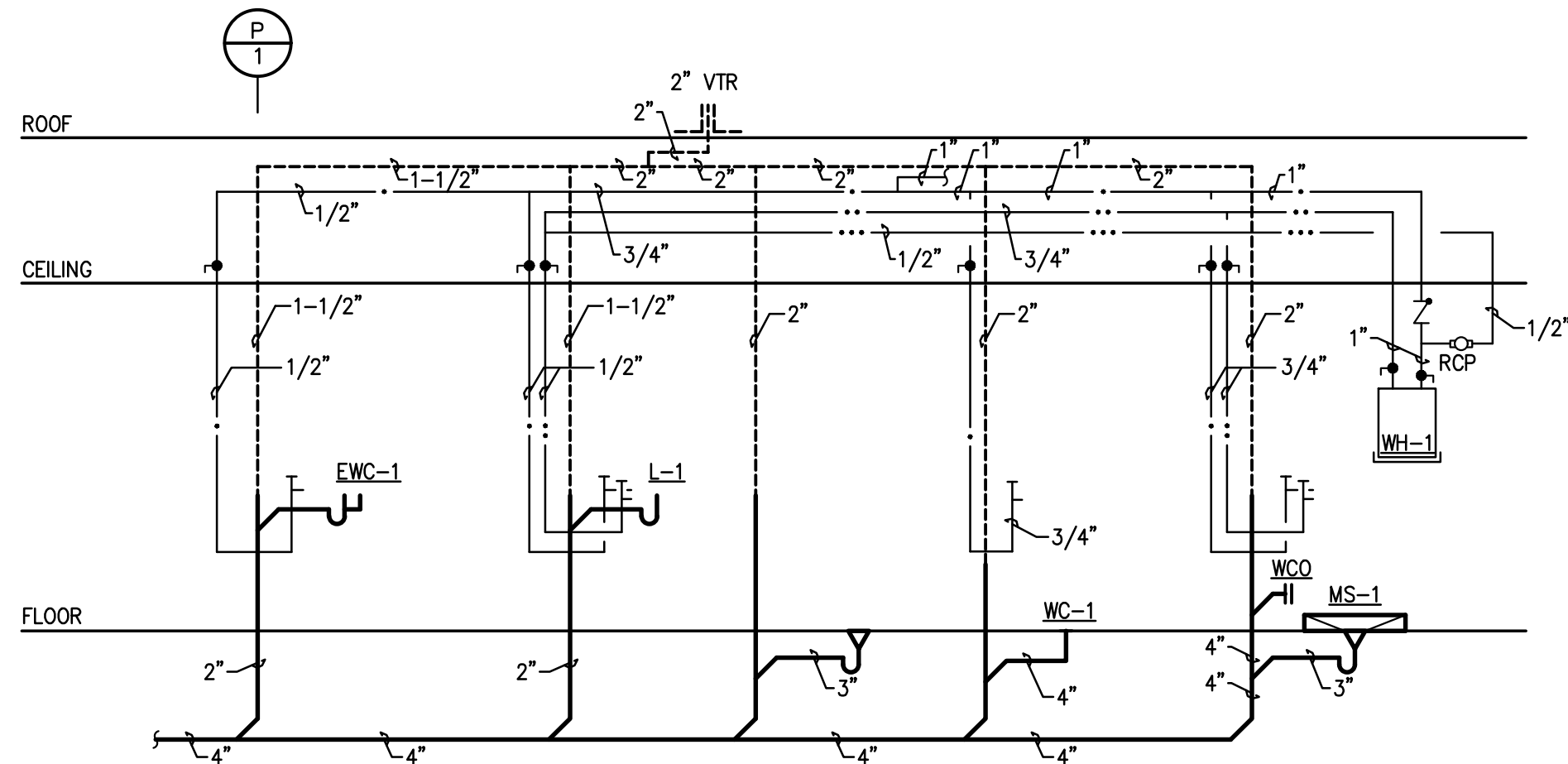
WALL CLEANOUT DETAIL  
NO SCALE

1



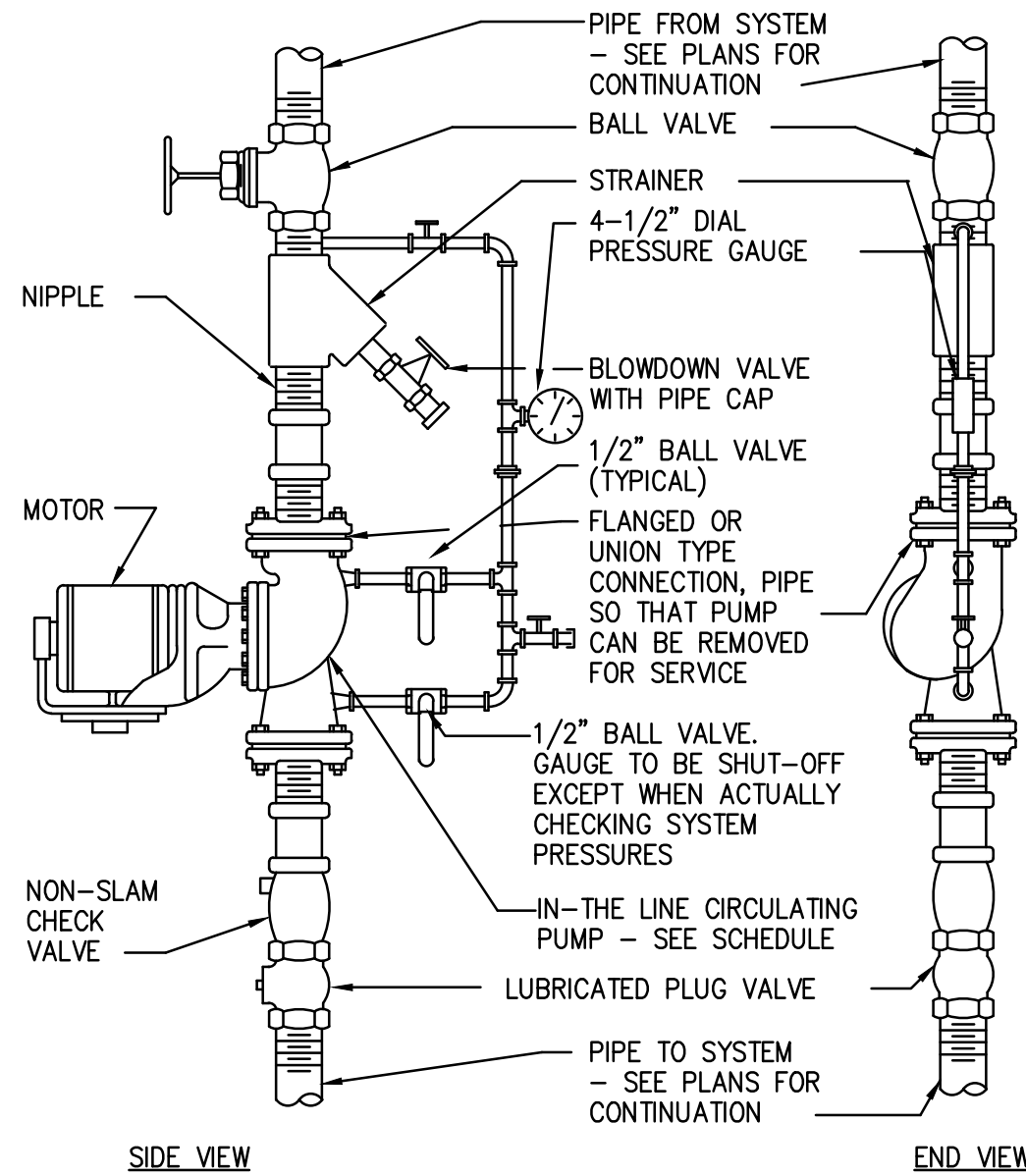
VENT THROUGH ROOF DETAIL  
NO SCALE

2



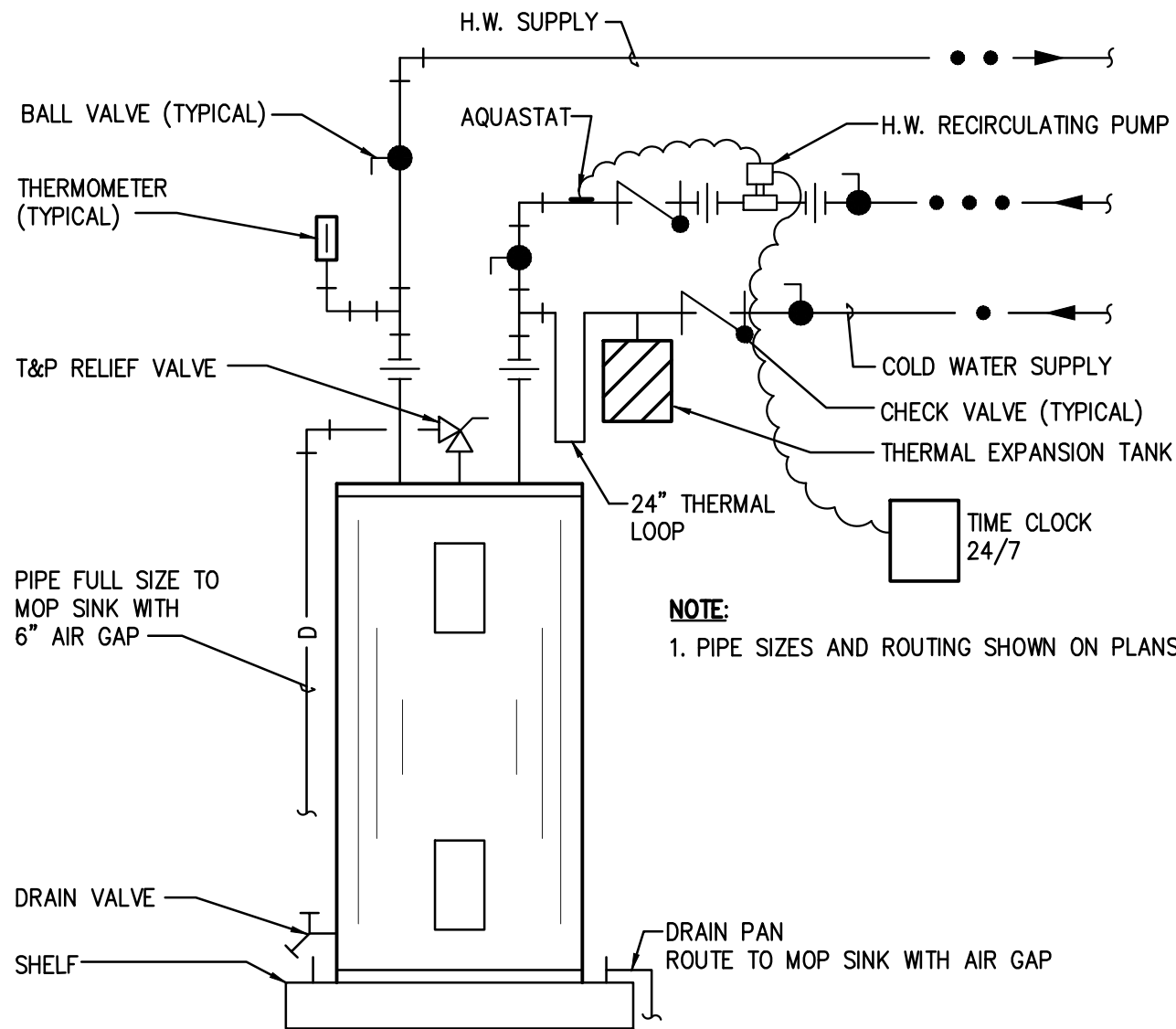
PLUMBING RISERS  
NO SCALE

3



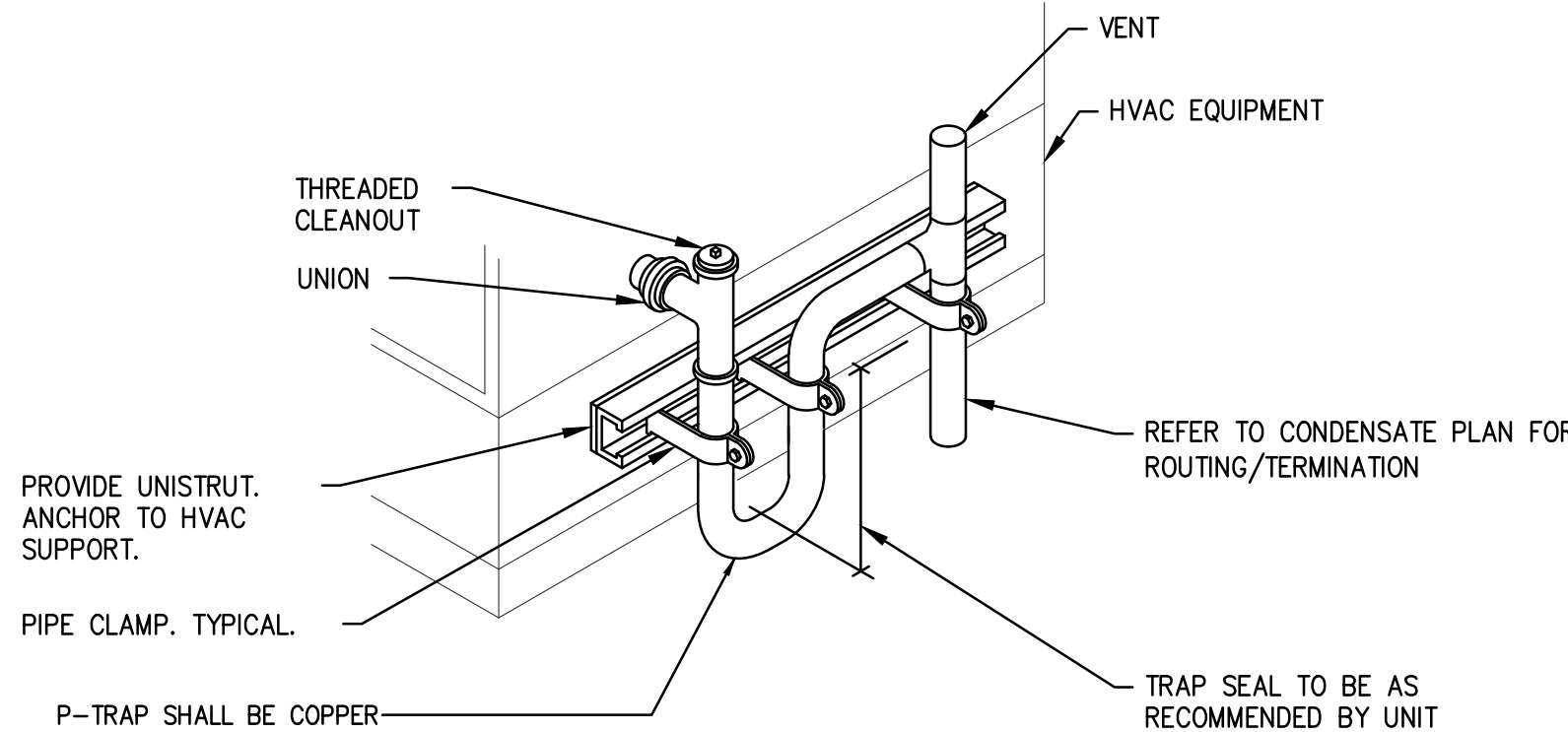
INLINE RECIRC. PUMP DETAIL  
NO SCALE

4



WATER HEATER DETAIL  
NO SCALE

5



CONDENSATE TRAP DETAIL  
NO SCALE

6

## PLUMBING SYMBOL LEGEND

SYMBOL	DESCRIPTION	SYMBOL	DESCRIPTION
	SANITARY WASTE PIPING		FLOW DIRECTION OF PIPING
	SANITARY VENT PIPING		HOSE BIBB OR NON FREEZE WALL HYDRANT (HB) (NFWH)
	COLD WATER PIPING		MIXING VALVE
	HOT WATER PIPING		CAP PIPING
	HOT WATER RECIRCULATION PIPING		FLOOR CLEANOUT (FCO)
	CONDENSATE DRAIN LINE PIPING (D) (CD)		TWO WAY OR DOUBLE CLEAN OUT (TWC) (DCO)
	NATURAL GAS PIPING		WALL CLEANOUT (WCO)
	GAS COCK		VENT THROUGH ROOF
	GATE VALVE		UNDER FLOOR
	BALL VALVE		CONNECTION TO EXISTING
	CHECK VALVE		EXISTING (E)
	UNION		BALANCING VALVE

ALL SYMBOLS ON THIS LIST ARE NOT NECESSARILY USED ON THIS JOB

## PLUMBING FIXTURE SCHEDULE

MARK	FIXTURE	MANUFACTURER MODEL NUMBER	ROUGH-IN SIZES				DESCRIPTION
			W	V	CW	HW	
WC-1	WATER CLOSET	AMERICAN STANDARD 2467.018	4"	2"	1"	---	CADET RIGHT HEIGHT ELONGATED PRESSURE-ASSISTED VITREOUS CHINA TOILET: 1.6 GPF. PROVIDE WITH HEAVY DUTY OPEN FRONT SEAT LESS COVER.
L-1	LAVATORY	KOHLER REVE #K-5027-1 DELTA #559HA-DST	2"	1-1/2"	1/2"	1/2"	VITREOUS CHINA WALL-HUNG LAVATORY (8" CENTERS) FOR CONCEALED ARMS SUPPORT COMPLETE WITH CARRIER, P-TRAP, SUPPLIES, STOPS, LAV-GUARD INSULATION KIT, WITH POLISHED CHROME FINISH AND NO POP UP DRAIN HOLE AND BRASS GRID STRAINER DRAIN. PROVIDE WITH WATTS MINV-MT ASSE. 1070 APPROVED MIXING VALVE.
MS-1	MOP SINK	MUSTEE 63M	3"	2"	3/4"	3/4"	MOP SERVICE BASIN MODEL 63M, 24"x24"x10", 63.600A FAUCET, 65.700 HOSE AND WALL HOOK, 67.2424 BACK SPLASH CATCHER, 65.600 MOP HANGER, CONTRACTOR TO PROVIDE AND INSTALL GILMOUR 13 BRASS 2-WAY CONNECTOR. CONTRACTOR TO ALSO PROVIDE AND INSTALL MUSTEE MODEL No. 65.700 HOSE AND HOSE HOLDER.
EWC-1	ELECTRIC WATER COOLER	ELKAY EZSIL-8-C	2"	1-1/2"	1/2"	---	FIXT. TYPE: WALL MOUNTED ELECTRIC WATER COOLER BARRIER FREE DUAL HEIGHT ADA AND TAS COMPLIANT WALL MOUNTED ELECTRIC WATER COOLER WITH HERMETICALLY SEALED AIR COOLED CONDENSING UNIT, FLEX-GUARD BUBBLERS, FRONT AND SIDE PUSH BARS AND VOLUME REGULATOR, DELIVER 8.0 GPH OF 50 DEG. F WATER BASED BASED ON 80 DEG. F INLET WATER TEMPERATURE. MOUNTING HEIGHT AS DIRECTED BY ARCHITECT.
RCP-1	RECIRC PUMP	BELL & GOSSETT NBF-9U/LW	---	---	---	1/2"	1.5 GPM, 3/4" CONNECTIONS, 0.12 HP, 120V 1 PHASE
FD-1	FLOOR DRAIN	ZURN ZN415	3"	2"	---	---	ADJUSTABLE FLOOR DRAIN. PROVIDE WITH TRAP GUARD.
WCO	WALL CLEANOUT	ZURN Z1441	4"	2"	---	---	WALL CLEANOUT WITH STAINLESS STEEL ACCESS COVER.

### GENERAL NOTES:

- ALL NEW FIXTURES TO MATCH EXISTING FIXTURES, EXCEPT FAUCETS, TO THE EXTENT POSSIBLE.
- REFER TO ARCHITECTURAL PLANS FOR ALL MOUNTING HEIGHTS OF FIXTURES. HANDICAPPED FIXTURES TO BE INSTALLED PER TAS & ADA REQUIREMENTS. VERIFY EXACT LOCATIONS OF ALL PLUMBING FIXTURES AND APPLIANCES PRIOR TO ROUGH-IN.
- ALL COLORS AND FINISHES BY ARCHITECT.

## WATER HEATER SCHEDULE

MARK	MANUFACTURER	MODEL	STORAGE (GALLON)	TEMP. RISE °F	RECOVERY (G.P.H.)	INPUT (KW)	ELECTRICAL
WH-1	A.O. SMITH	DEL-10	10 USG	72	8	1.5	120V

### GENERAL NOTES:

- PITCH ALL DRAINAGE PIPING AT 1/4" FOOT MINIMUM UNLESS OTHERWISE NOTED.
- WATER HEATER TO BE WALL MOUNTED ABOVE MS-1.

CFT DEVELOPMENT, LLC.

1683 Walnut Grove Ave.  
Rosemead, California  
91770

Telephone: 626.799.9898  
Facsimile: 626.372.8288

Issue Dates:

FOR LANDLORD REVIEW XX-XX-21

Project Number:

17106-004

Date Plotted:

MAY 20, 2021

Drawn By:

RM

Checked By:

EA

File Name:

CONSTRUCTION DOCUMENTS