

# CORNER RECORD

Agency Index

BOOK 112 PAGE 38

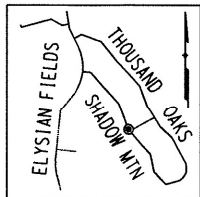
Document Number

CR 11402

City of OAKLANDCounty of ALAMEDA, California

## Brief Legal Description

CITY OF OAKLAND MONUMENT AS SHOWN UPON MONUMENT MAP 1527B464\_106 AND TRACT 3747 (93-MAPS-52) NEAR THE INTERSECTION OF SHADOW MOUNTAIN AND QUIETWOOD.



## CORNER TYPE

Government Corner ☐ Control  
Meander ☐ Property  
Rancho ☐ Other

Date of Survey 5/4/2018

## COORDINATES (Optional)

N. 2105144.9 ± E. 6091190.6 ±

☒ Elevation  
☐ Units Metric ☐ U.S. Survey Foot ☒  
☐ Horizontal Datum CCS 83  
Zone 3 Epoch Date  
Vertical Datum

☐ Complies with Public Resources Code §§8801-8819  
☐ Complies with Public Resources Code §§8890-8902

PLS Act Ref: ☐ 8765(d) ☒ 8771 ☐ 8773 ☐ Other:

Corner/  
Monument: ☒ Left as found ☐ Established ☐ Rebuilt ☒ Pre-Construction  
☐ Found and tagged ☐ Reestablished ☒ Referenced ☐ Post-Construction

Narrative of corner identified and monument as found, set, reset, replaced, or removed:

☒ See sheet #2 for description (s):

FOUND MONUMENT THAT COULD BE DAMAGED OR DESTROYED BY A PROPOSED GAS LINE CONSTRUCTION PROJECT. MONUMENT WAS REFERENCED AS SHOWN ON PAGE 2 OF 2.

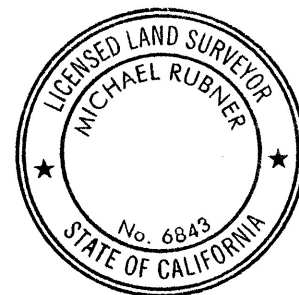
THE PURPOSE OF THIS CORNER RECORD IS TO PRESERVE THE LOCATION OF THE MONUMENT PRIOR TO CONSTRUCTION. NO ATTEMPT WAS MADE TO DETERMINE THE RELATIONSHIP BETWEEN THE MONUMENT AND PROPERTY LINES, RIGHT-OF-WAY LINES, CENTERLINES OR OTHER MONUMENTS.

## SURVEYOR'S STATEMENT

This Corner Record was prepared by me or under my direction in conformance with  
the Professional Land Surveyors' Act on AUGUST 7, 2018

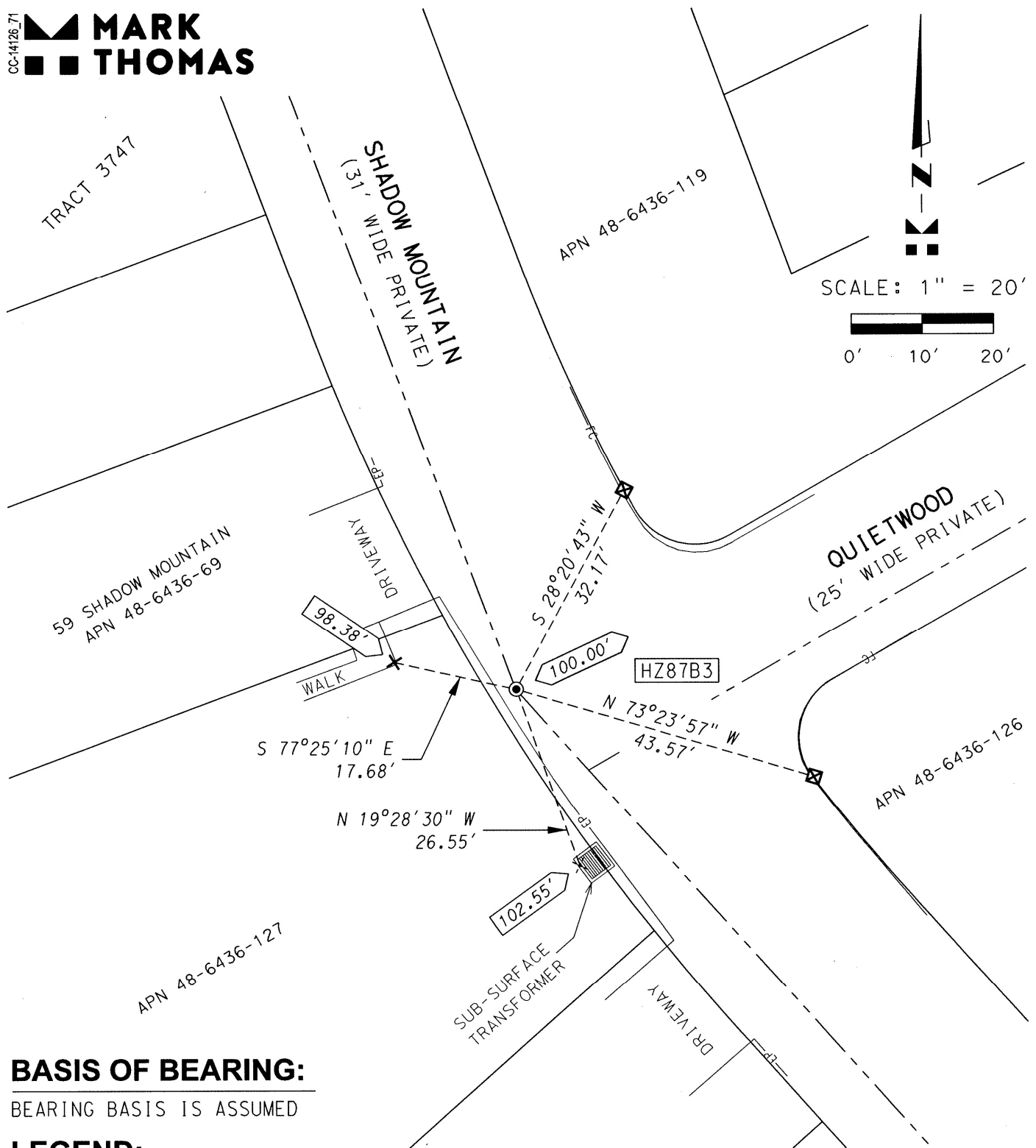
Signed Erik Paul Kiel P.L.S. or R.C.E. No. 8911

## COUNTY SURVEYOR'S STATEMENT

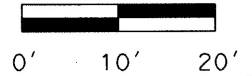
This Corner Record was received 16 MAY 2018and examined and filed 5 SEPTEMBER 2018Signed Michael Rubner P.L.S. or R.C.E. No. 6843Title COUNTY SURVEYOR

County Surveyor's Comment

CC-14126.71  
 **MARK  
THOMAS**



SCALE: 1" = 20'

**BASIS OF BEARING:**

BEARING BASIS IS ASSUMED

**LEGEND:**

- FOUND 2.5" BRASS DISK STAMPED RCE 9821 SET IN CONCRETE IN WELL
- ☒ SET CUT CROSS FOR REFERENCE POINT IN TOP OF CONCRETE CURB
- ✕ SET CUT CROSS FOR REFERENCE POINT IN CONCRETE WALKWAY
- ✕ SET CUT CROSS FOR REFERENCE POINT IN TOP OF CONCRETE UTILITY STRUCTURE

100.00' MONUMENT ELEVATION (ASSUMED)

xxx.xx' REFERENCE POINT ELEVATION (ESTABLISHED USING A DIGITAL LEVEL)

HZ87B3 ALAMEDA COUNTY MONUMENT IDENTIFICATION NUMBER