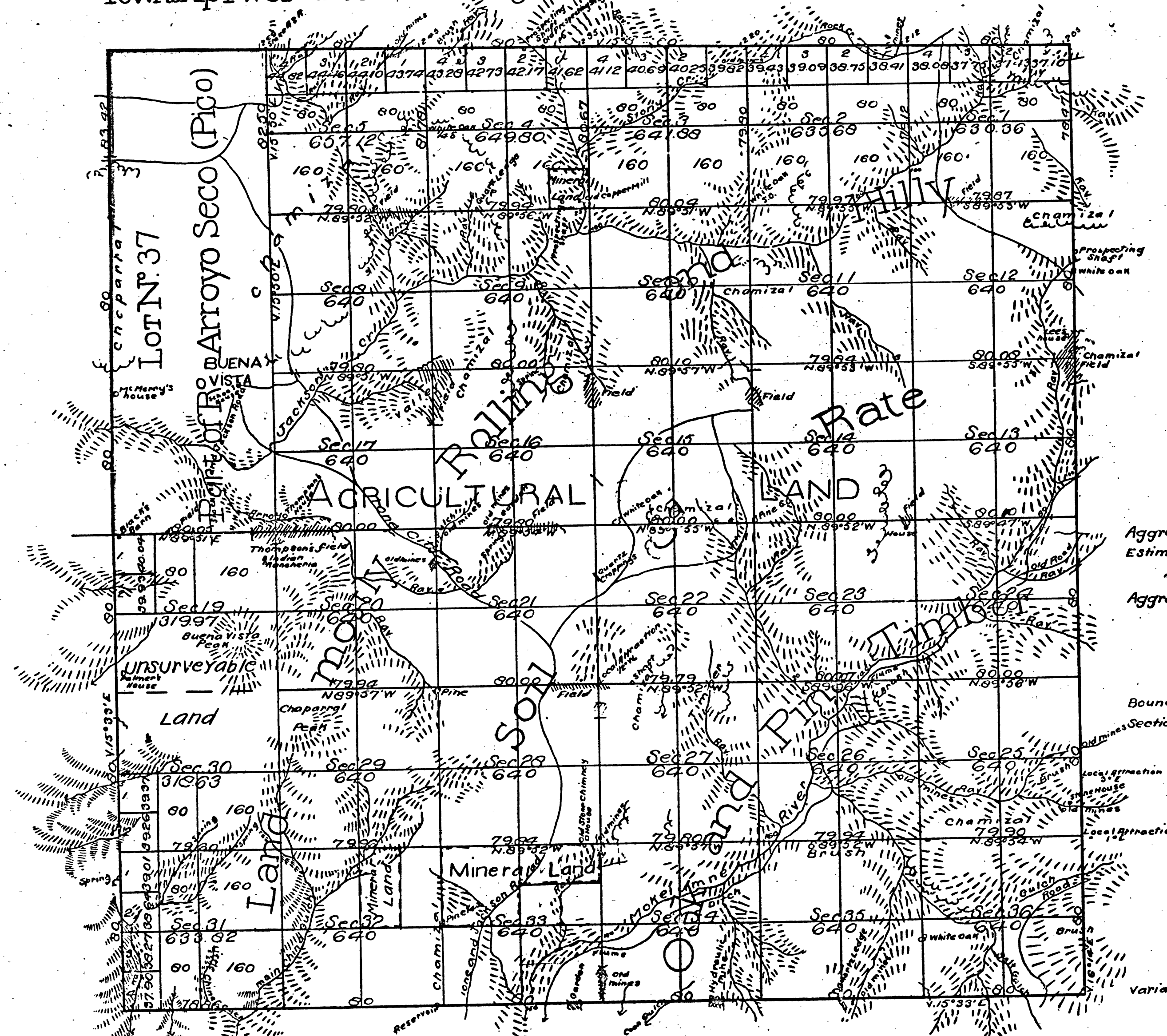


Township N° 5 North

Range N° 10 East

Mount Diablo Meridian

G.J.
OK
D-



Aggregate Area of Public Land 20487.26 Acres
Estimated Private Grant 1917.93 "
" " Unsurveyed Mountain Land 638.60 "
Aggregate 23043.79 "

Boundaries of Lot N° 37 re-surveyed by Mather, and charged as
Section Lines

DEPARTMENT OF THE INTERIOR,
GENERAL LAND OFFICE

Washington, D. C. July 1, 1907.
I hereby certify that this is a true copy
of the plat of official survey of the lands
to which it relates, on file in this office.

N. G. Simpson,
Recorder, General Land Office.

Variation used by Mather on lines not otherwise noted, 16° 30' E.

Surveys Designated	By whom Surveyed	Date of Contract	Amount of Surveys	When Surveyed
Township lines colored red	Fleming Amyx	September 30 th 1858		1859
Boundaries of Lot N° 37	A. W. von Schmidt	(Inst.) Aug. 9 th 1859		1859
Rest of North bound. of Township	J. G. Mather	August 27 th 1869	5 mls. 2 chs. 6 lns.	1869
" Township lines	"	"	14 " 77 " 33 "	1869
Section lines	"	"	57 " 2 " 10 "	October 30 th 1869

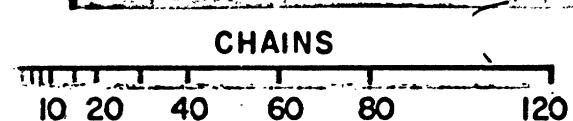
The above Map of Township N° 5 North, Range N° 10 East Mount Diablo Meridian
is strictly conformable to the field notes of the Survey thereof, on file in this office,
which have been examined and approved.
Surveyor General's Office
San Francisco California
September 30th 1870

41 395

Sherman Day
Sur. Gen. Cal.

8

CHAINS



BLM 207