

# CORNER RECORD

BK 87 PG 74

APN No. 81D - 1645 - 21 & 22 (Optional)

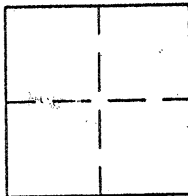
Document Number CR 9060

City of Hayward

County of Alameda, California

Brief Legal Description Parcels 3 and 4, P.M. No. 2654

107 Maps 81



## CORNER TYPE

Government Corner ☐ Control ☐  
Meander ☐ Property ☒  
Rancho ☐ Other ☐  
Date of Survey April 12, 2016

## COORDINATES (Optional)

N. \_\_\_\_\_  
E. \_\_\_\_\_  
Zone \_\_\_\_\_ Datum \_\_\_\_\_  
Elev. \_\_\_\_\_

Corner - Left as found ☐ Found and tagged ☐ Established ☒ Reestablished ☐ Rebuilt ☐

In compliance with Section 8771 of the Professional Land Surveyors' Act, this corner record is being filed to ESTABLISH \_\_\_\_\_ / REESTABLISH \_\_\_\_\_ the position of an existing monument PRIOR \_\_\_\_\_ / SUBSEQUENT \_\_\_\_\_ to street or highway reconstruction. (Use this portion only when applicable.)

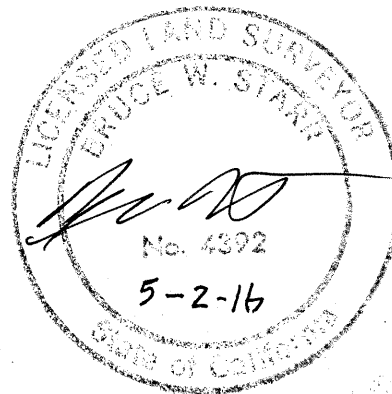
Identification and type of corner found: Evidence used to identify or procedure used to establish or reestablish the corner:  
See Map

A description of the physical condition of the monument as found and as set or reset:  
see Map

## SURVEYOR'S STATEMENT

This Corner Record was prepared by me or under my direction in conformance with the Land Surveyors' Act on May 2, 2016.

Signed [Signature] L.S. ~~4392~~ Number 4392



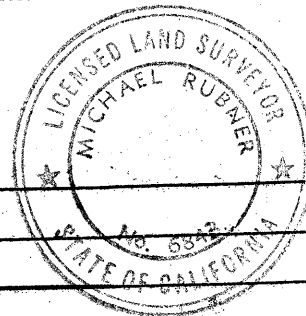
## COUNTY SURVEYOR'S STATEMENT

This Corner Record was received 11 OCTOBER, 2016 and examined and filed 2 DECEMBER, 2016.

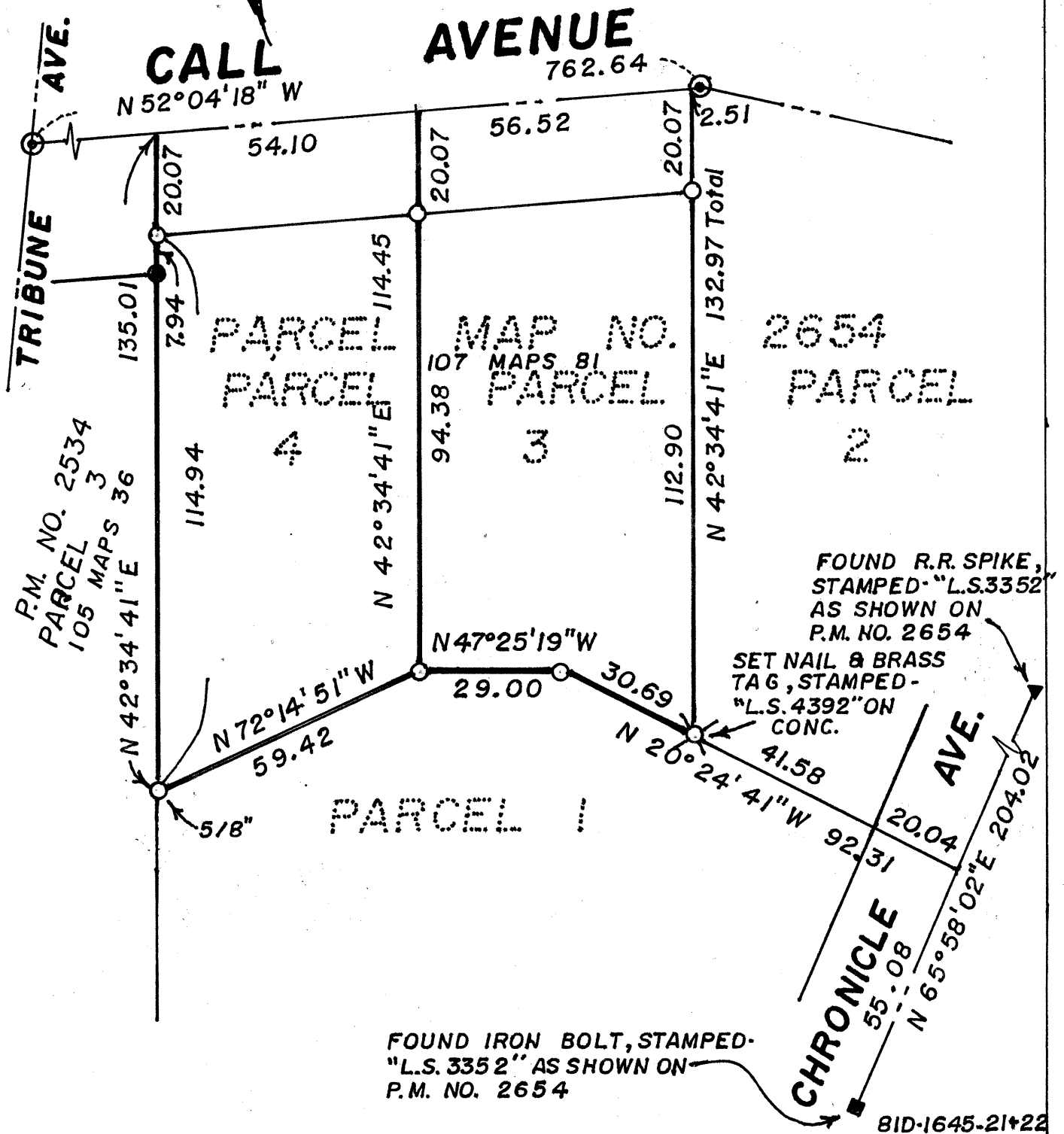
Signed Michael Rubner Title County Surveyor

Expiration Date: \_\_\_\_\_

County Surveyor's Comment \_\_\_\_\_



- ① FOUND STD. CITY OF HAYWARD CONC. MONUMENT (DISC W/ PUNCH)
- SET 3/8" REBAR WITH PLASTIC CAP, STAMPED- "L.S.4392", UNLESS OTHER SIZE NOTED
- FOUND BENT OVER PIPE PER P.M. NO. 2534

$$l'' = 30'$$


81D-1645-21+22