

CORNER RECORD

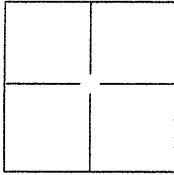
BK 43 Pg 29

City of BERKELEY

Document Number CR 4770

County of ALAMEDA, California

Brief Legal Description CITY OF BERKELEY MONUMENT B0084



CORNER TYPE

Government Corner ☐ Control ☒
Meander ☐ Property ☐
Rancho ☐ Other ☐

Date of Survey 12/28/2011

COORDINATES(Optional)

N. _____
E. _____
Zone _____ NAD27 ☐ NAD83 ☐
NAD83 Epoch _____
Elev. _____
Vert. Datum: NGVD29 ☐ NADV88 ☐
Meas. Units: Metric ☐ Imperial ☐

Corner - Left as found ☒ Found and tagged ☐ Established ☐ Reestablished ☐ Rebuilt ☐

Identification and type of corner found: Evidence used to identify or procedure used to establish or reestablish the corner:

CITY OF BERKELEY MONUMENT B0084 IN WELL

A description of the physical condition of the monument as found and as set or reset: FOUND

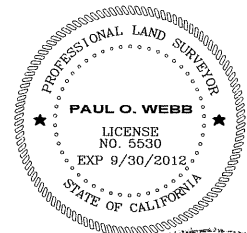
MONUMENT IN WELL IN GOOD CONDITION.
SET 4 CONCRETE NAILS AS REFERENCE
POINTS.

SURVEYOR'S STATEMENT

This Corner Record was prepared by me or under my direction in conformance with

the Land Surveyor's Act on JANUARY 9, 2012.

Signed Paul O. Webb P.L.S. or R.C.E. No.: 5530



COUNTY SURVEYOR'S STATEMENT

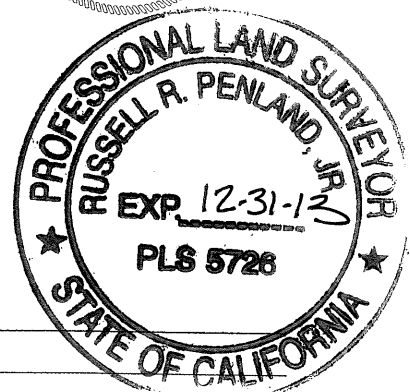
This Corner Record was received _____ and examined

and filed 2.3.2012

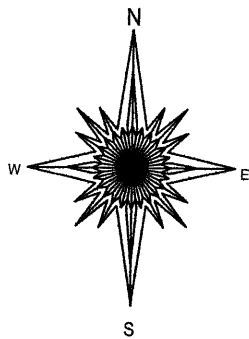
Signed Russell R. Penland, Jr. P.L.S. or R.C.E. No.: 5726

Title COUNTY SURVEYOR

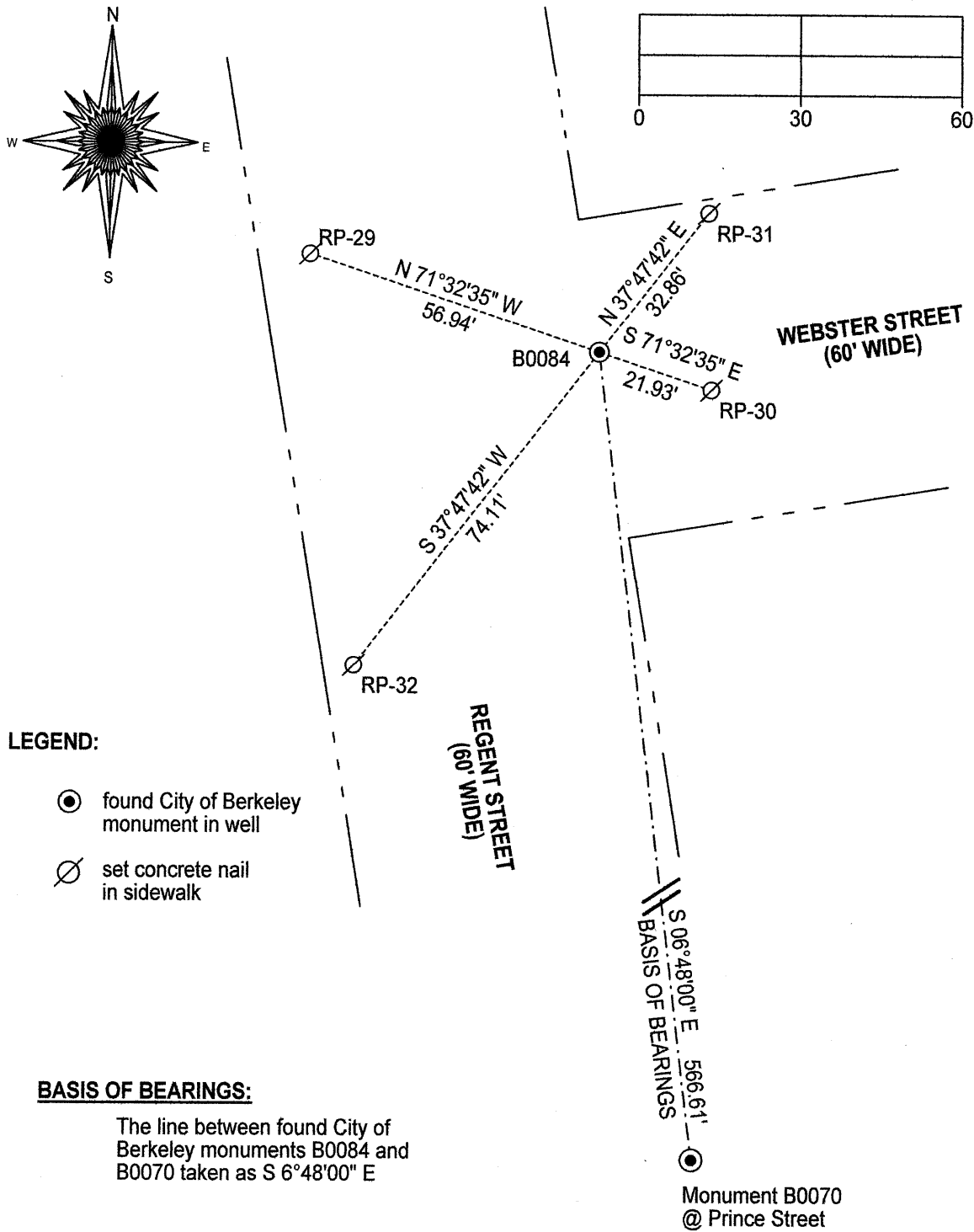
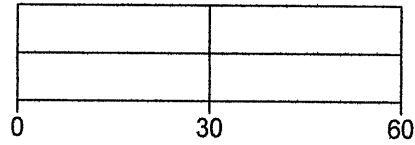
County Surveyor's Comment _____



MONUMENT B0084 TIE-OUT



SCALE: 1 INCH = 30 FEET



LEGEND:

- found City of Berkeley monument in well
- ⊗ set concrete nail in sidewalk

BASIS OF BEARINGS:

The line between found City of Berkeley monuments B0084 and B0070 taken as S 6°48'00" E