

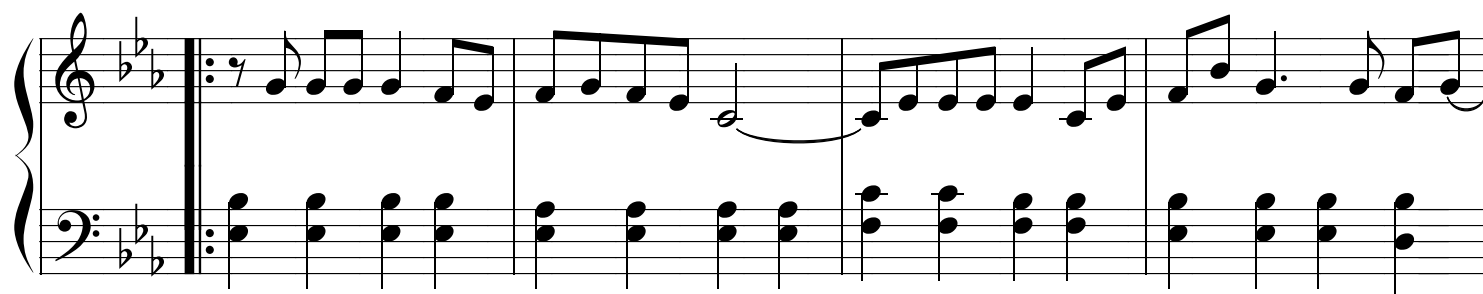
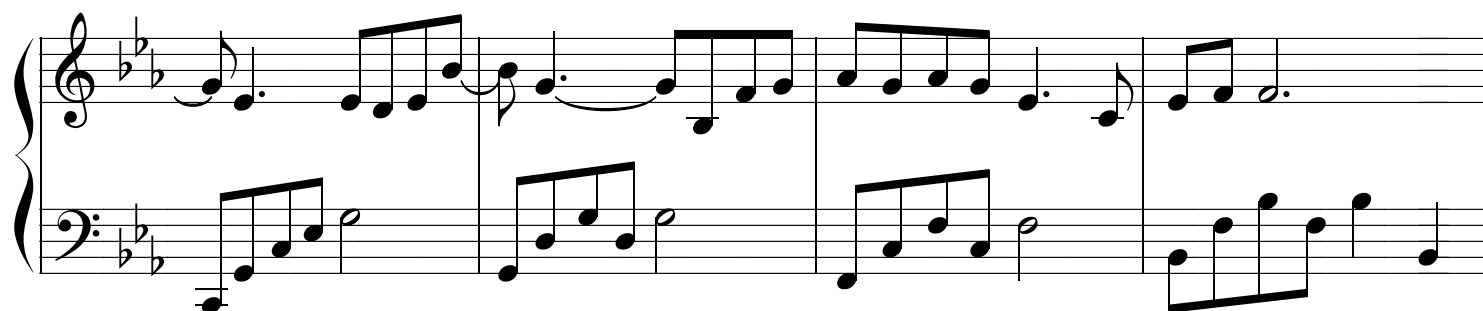
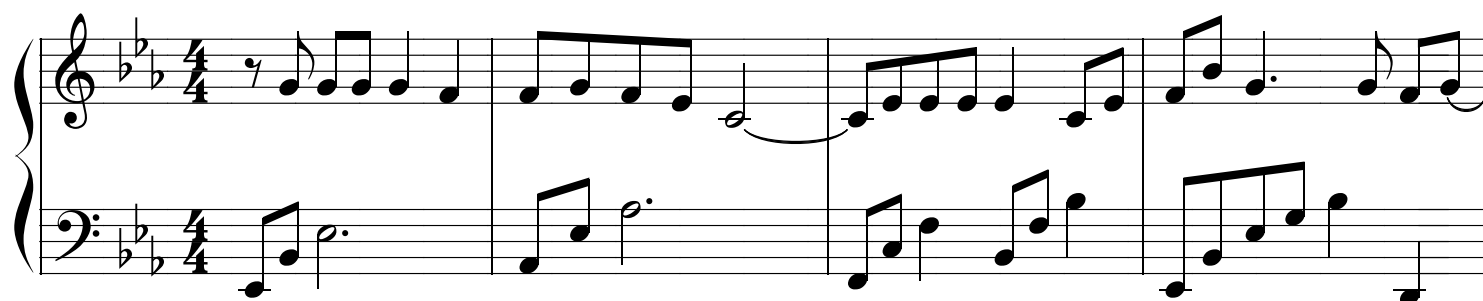
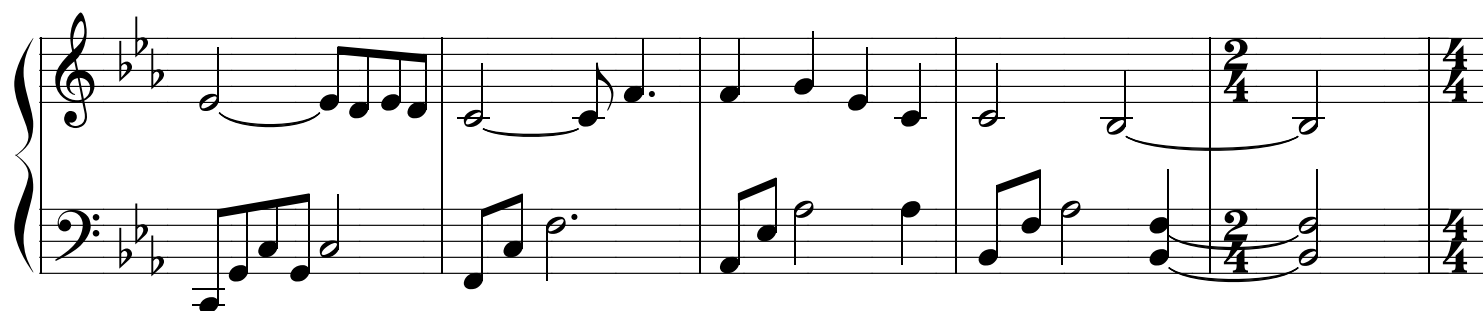
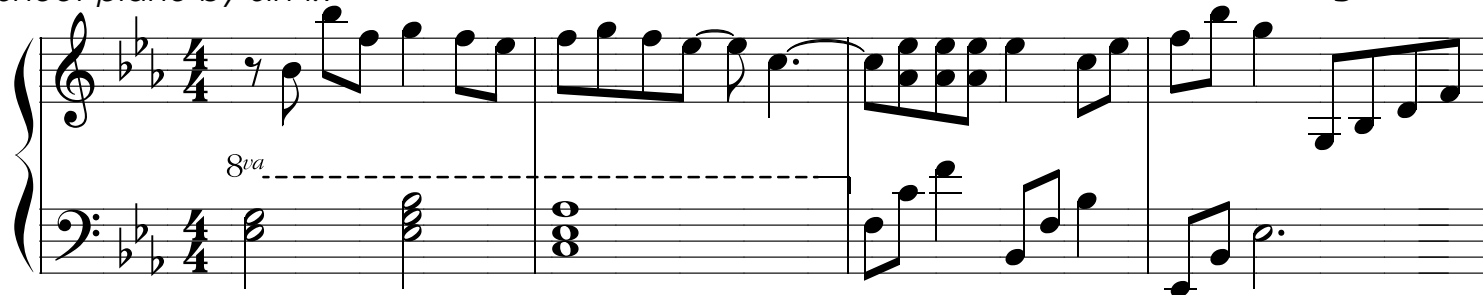
# Giúp Anh Trả Lời Những Câu Hỏi

1

## *Piano's House*

Sheet piano by Sín :x

Vương Anh Tú



A musical score for the song 'The Rose Tree'. It features a treble and bass staff. The treble staff contains a melody with eighth and sixteenth notes, while the bass staff provides a harmonic accompaniment with chords and single notes. The key signature has two flats (B-flat and E-flat), and the time signature is 4/4. The melody includes a trill on the final note.

[illegible]

A musical score for the song 'The Rose Tree'. It features a treble and bass staff with a key signature of two flats (B-flat and E-flat) and a common time signature. The melody is written in the treble staff, and the accompaniment is in the bass staff. The music consists of four measures. The first measure has a treble staff starting with a quarter note G4, followed by eighth notes A4, B-flat4, A4, G4, and a quarter note F4. The bass staff starts with a quarter note G2, followed by eighth notes A2, B-flat2, A2, G2, and a quarter note F2. The second measure has a treble staff starting with a quarter note E4, followed by eighth notes F4, G4, A4, B-flat4, and a quarter note A4. The bass staff starts with a quarter note D2, followed by eighth notes E2, F2, G2, A2, and a quarter note G2. The third measure has a treble staff starting with a quarter note G4, followed by eighth notes A4, B-flat4, A4, G4, and a quarter note F4. The bass staff starts with a quarter note G2, followed by eighth notes A2, B-flat2, A2, G2, and a quarter note F2. The fourth measure has a treble staff starting with a quarter note E4, followed by eighth notes F4, G4, A4, B-flat4, and a quarter note A4. The bass staff starts with a quarter note D2, followed by eighth notes E2, F2, G2, A2, and a quarter note G2.

1.

8va

[illegible]

The image displays a five-system musical score for piano, written in B-flat major (two flats) and 4/4 time. The notation is as follows:

- System 1:** Treble staff begins with a half note G4, followed by an eighth note F#4, and a quarter note E4. The bass staff features a continuous eighth-note accompaniment pattern.
- System 2:** Treble staff continues with a half note D4, followed by a half note C4. The bass staff continues the eighth-note accompaniment.
- System 3:** Treble staff has a whole note G4. The bass staff features a series of chords, including a triad of G2, B2, and D3.
- System 4:** Treble staff has a whole note G4. The bass staff features a series of chords, including a triad of G2, B2, and D3.
- System 5:** Treble staff has a whole note G4. The bass staff features a series of chords, including a triad of G2, B2, and D3.

The image displays two systems of a piano score in B-flat major (two flats). The first system consists of four measures. The right hand features a melodic line with eighth and sixteenth notes, while the left hand provides a harmonic accompaniment. A dashed line with the annotation '8va' indicates an octave transposition for the first measure of the left hand. The second system also consists of four measures, continuing the musical piece. The final measure of the second system is marked with a double bar line and a repeat sign, indicating the end of the excerpt.