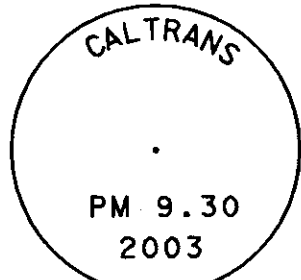


# RECORD OF SURVEY NO. 33-09 SECTIONS 24/25, TOWNSHIP 4 NORTH, RANGE 26 EAST, M.D.B. & M.

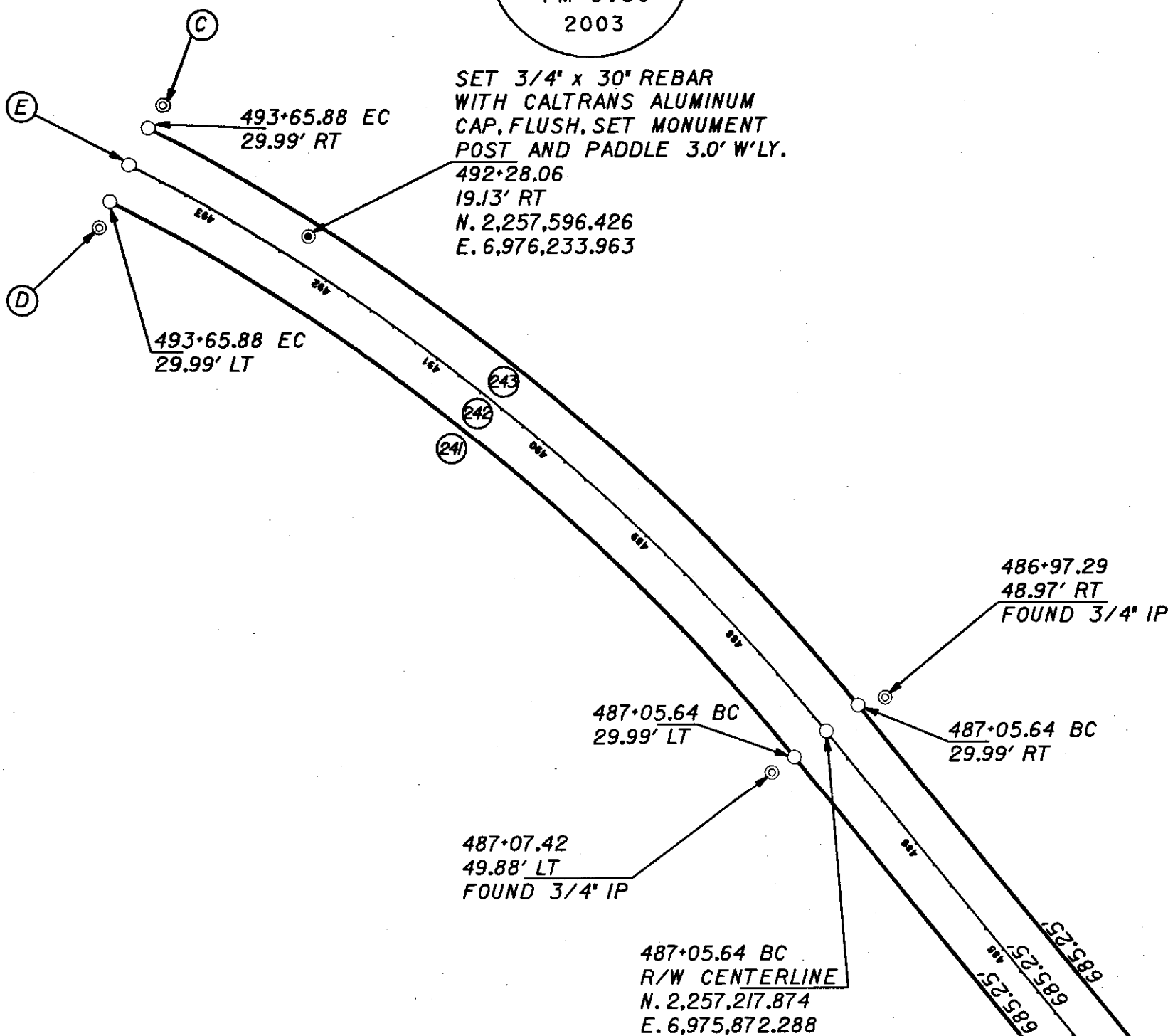
SHEET 26 OF 27



COR SEC 24/25, T-4-N, R-26-E,  
SEC 19/30, T-4-N, R-27-E, M.D.B. & M.  
SET 2-1/4" CADT BRASS CAP  
CEMENTED IN A 1-1/4" GALVANIZED  
PIPE IN THE CENTER OF AN  
EXISTING 4' DIAMETER ROCK MOUND,  
WITH MONUMENT POST AND PADDLE  
3.0' NORTH.  
N. 2,256,864.981  
E. 6,978,558.929

## POINT DESCRIPTIONS

- (A) 480+20.38 EC  
29.99' LT
- (B) 480+52.19  
29.99' LT  
FOUND 3/4" IP
- (C) 493+64.07  
49.44' RT  
FOUND 3/4" IP
- (D) 493+64.04  
49.88' LT  
FOUND 3/4" IP
- (E) 493+65.88 EC  
R/W CENTERLINE  
N. 2,257,726.190  
E. 6,976,286.261

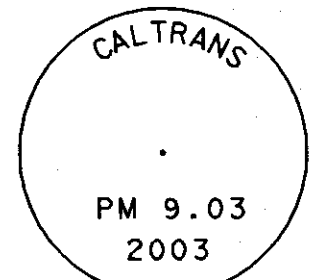
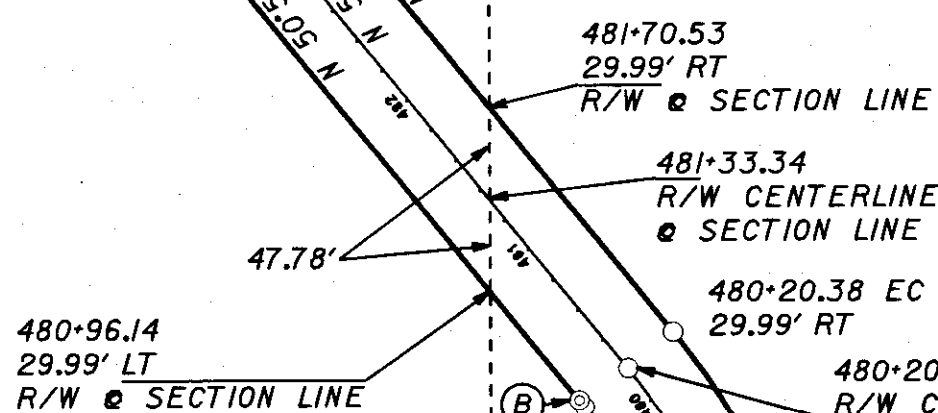


SECTION 24

SECTION 25

## R/W CURVE DATA

R/W LT	R/W CL	R/W RT
475+26.16 BC Δ = 13° 20' 34" R = 829.67' L = 193.21	475+26.16 BC Δ = 13° 20' 34" R = 799.68' L = 186.23'	475+26.16 BC Δ = 13° 20' 34" R = 769.69' L = 179.24'
478+19.55 BC Δ = 38° 22' 21" R = 269.89' L = 180.75'	478+19.55 BC Δ = 38° 22' 21" R = 299.88' L = 200.84'	478+19.55 BC Δ = 38° 22' 21" R = 329.87' L = 220.92'
487+05.64 BC Δ = 23° 39' 09" R = 1,569.37' L = 647.86	487+05.64 BC Δ = 23° 39' 09" R = 1,599.36' L = 660.24'	487+05.64 BC Δ = 23° 39' 09" R = 1,629.35' L = 672.62'



SET 3/4" x 30" REBAR  
WITH CALTRANS ALUMINUM  
CAP, FLUSH, SET MONUMENT  
POST AND PADDLE 3.0' N'LY.  
478+38.72  
79.19' RT  
N. 2,256,641.500  
E. 6,975,179.533

## LEGEND:

- CALCULATED POSITION, NOTHING FOUND OR SET
- SET CALTRANS ALUMINUM CAP ON 3/4" REBAR  
STAMPED AS NOTED
- ⊙ FOUND MONUMENT AS NOTED
- ◆ LAND NET CORNER AS NOTED

CALCULATED POSITION  
OF THE WEST 1/16 COR,  
SEC 25/26, T-4-N, R-26-E,  
M.D.B. & M.  
N. 2,256,855.136  
E. 6,974,381.354

