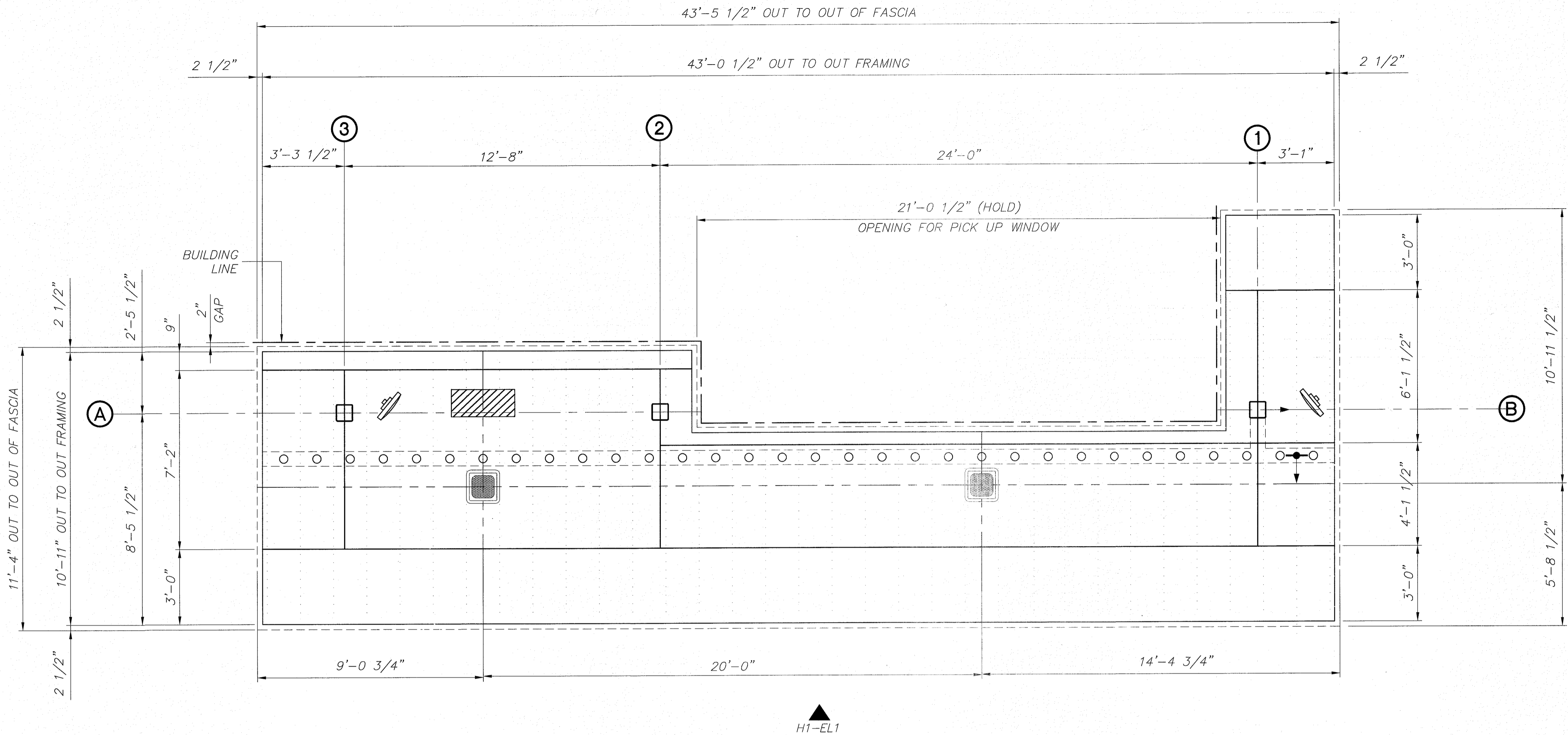


ENTRANCE

A1-EL1



A9-EL1

EXIT

FI CANOPY LIGHT LAYOUT

1/4" = 1'-0"

1. THE LIGHT LAYOUT IS A SUGGESTED PLAN ONLY. IT IS PROVIDED BY LANE AS A SERVICE TO ITS CUSTOMER AND IS TO BE USED AS A GUIDE ONLY.
2. THESE LIGHT FIXTURES NEED TO BE CENTERED IN DECK PANELS.
3. ENSURE ADEQUATE CLEARANCE FROM STRUCTURAL MEMBERS PRIOR TO CUTTING DECK.
4. INSTALLATION OF FIXTURES TO BE DONE IN ACCORDANCE WITH MANUFACTURES INSTRUCTIONS AND RECOMMENDATIONS.
5. IF LIGHTS INTERFERE WITH LEADER GUTTERS MOVE ROW LIGHTS TO THE NEXT DECK.

LEGEND:

INDICATES CRUS-CS-LED-LW-30-UE-WHT CANOPY DECK LIGHTS.

INDICATES DECK STITCHING.

INDICATES MOUNTED FAN

INDICATES MOUNTED HEATER

AI GENERAL NOTES

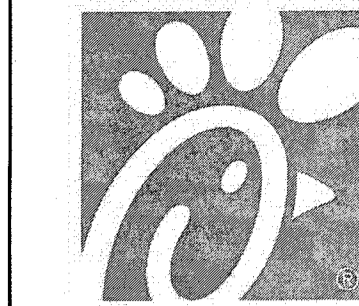
N.T.S.

A6 NOT USED

N.T.S.

A10 NOT USED

N.T.S.

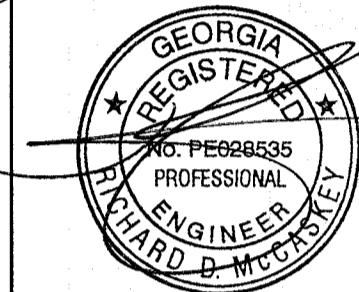


Chick-fil-A

Chick-fil-A
5200 Buffington Road
Atlanta, Georgia 30349-2998

LANE
SUPPLY, INC.
120 FAIRVIEW
ARLINGTON, TX. 76010
(817) 261-9116

SEAL:



DEC 2 2 2017

CHICK-FIL-A
SAR CHEROKEE PLACE. FSR
115 CHEROKEE PLACE.
CARTERSVILLE, GA 30121

FSR# 0534

REVISION SCHEDULE
NO. DATE DESCRIPTION

CONSULTANT PROJECT # 60005

PRINTED FOR Permit

DATE 2017/12/19

DRAWN BY AFG

CHECKED BY RM

Information contained on this drawing and in all digital files produced for above named project may not be reproduced in any manner without express written or verbal consent from authorized project representatives.

SHEET
CANOPY
LIGHT LAYOUT

SHEET NUMBER

OMD-9
LLI OF 1