

4-122

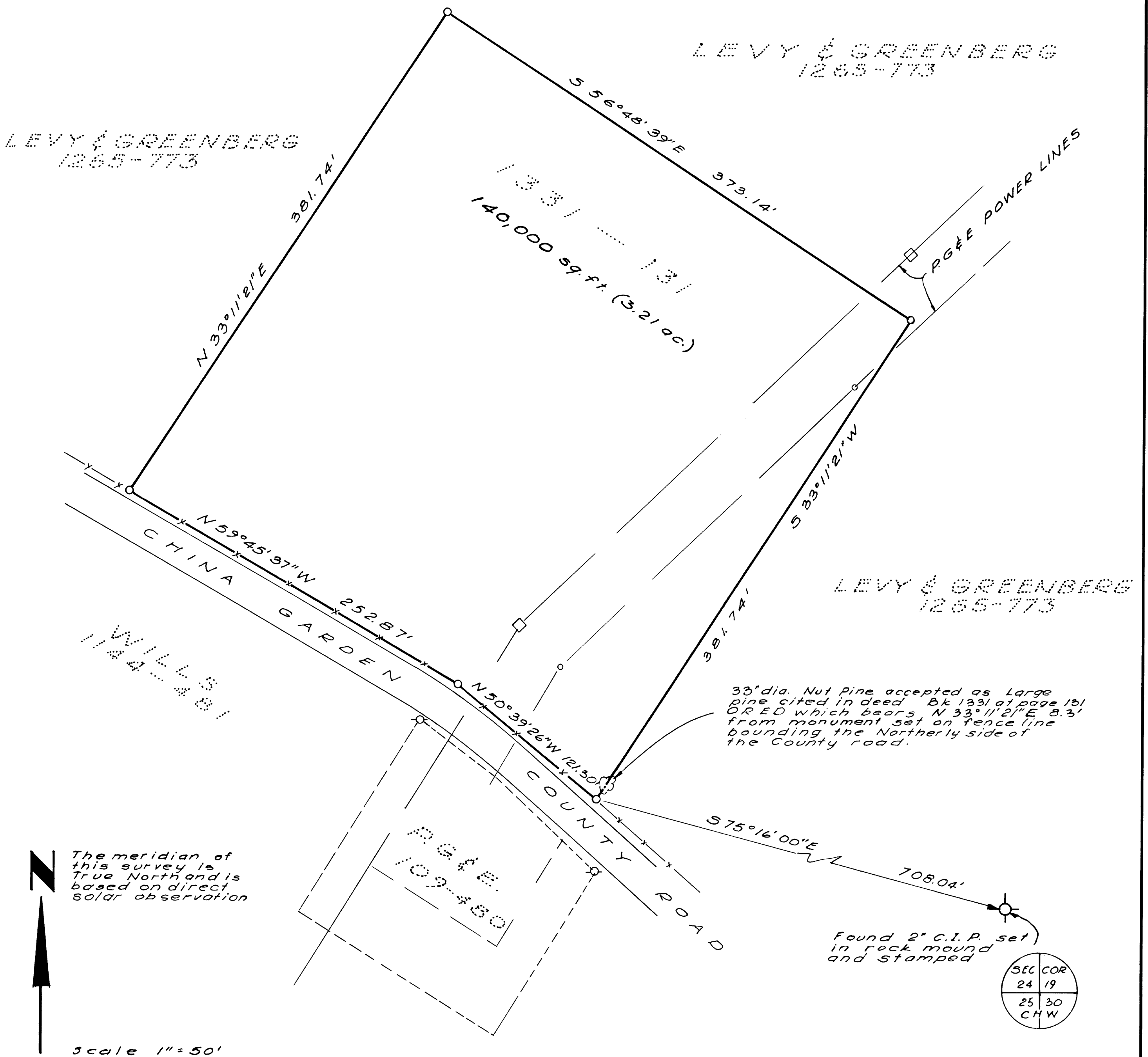
4/22

RECORD OF SURVEY

A PORTION OF THE S. E. QUARTER
OF SECTION 24, T. 10N., R. 10E., M. D. M.

COUNTY OF EL DORADO - CALIFORNIA

SHINKLE ENGINEERING AUGUST 1975



4-122

SURVEYOR'S CERTIFICATE

This map correctly represents a
survey made by me or under my
direction in conformance with
the requirements of the Land
Surveyor's Act at the request of
Gordon Hesser in August, 1975.

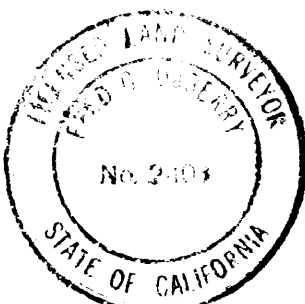
Robert W. Shinkle
Robert W. Shinkle - RCE 10594



COUNTY SURVEYOR'S CERTIFICATE

This map has been examined
for conformance with the
requirements of the Land
Surveyor's Act this 18th
day of 18, 1975.

Fred G. DeBerry
Fred G. DeBerry - LS 2408
County Surveyor
County of El Dorado



RECORDER'S CERTIFICATE

Filed this 18th day of
September, 1975 at 3:19 P.M.
in Book 4 of Record of
Surveys at page 122 at
the request of R.W. Shinkle.
Doc. No. 26315

James W. Sweeney
James W. Sweeney
County Recorder
County of El Dorado

Mary L. Toole
by Deputy

4/22