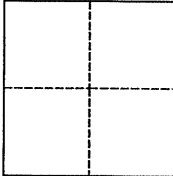


CORNER RECORD

Agency Index BK 102 PG 72Document Number CR 10527City of CASTRO VALLEY County of ALAMEDA, CaliforniaBrief Legal Description HE27X1 (CAMINO ALTA MIRA CUL-DE-SAC)**CORNER TYPE****COORDINATES (Optional)**Government Corner ☒ Control
Meander ☐ Property
Rancho ☐ Other

N. _____ E. _____

Elevation _____

Units _____ Metric ☐ U.S. Survey Foot ☒

Horizontal Datum _____

Zone _____ Epoch Date _____

Vertical Datum _____

☐ Complies with Public Resources Code §§8801-8819☐ Complies with Public Resources Code §§8890-8902PLS Act Ref.: ☒ 8765(d) ☐ 8771 ☐ 8773 ☐ Other:Corner/
Monument: ☐ Left as found ☐ Established ☐ Rebuilt ☒ Pre-Construction
☐ Found and tagged ☐ Reestablished ☐ Referenced ☐ Post-Construction

Narrative of corner identified and monument as found, set, reset, replaced, or removed:

☒ See sheet #2 for description(s):

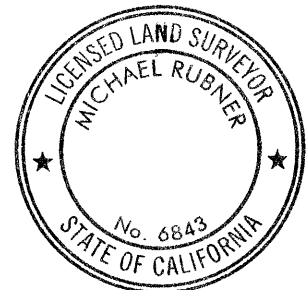
FOUND 5/16" BRASS PIN SET IN CONCRETE FOR COUNTY MON
IN MON WELL, DOWN 12", SET FOUR CUT "X" REFERENCES
AND TIE TO JF38Y2 AS SHOWN ON SHEET 2.

SURVEYOR'S STATEMENT

This Corner Record was prepared by me or under my direction in conformance with

the Professional Land Surveyors' Act on SEPTEMBER 8, 2017Signed [Signature] P.L.S. or R.C.E. No. LS 5837**COUNTY SURVEYOR'S STATEMENT**This Corner Record was received 4 AUGUST 2017and examined and filed 17 OCTOBER 2017Signed Michael Rubner P.L.S. or R.C.E. No. 6843Title COUNTY SURVEYOR

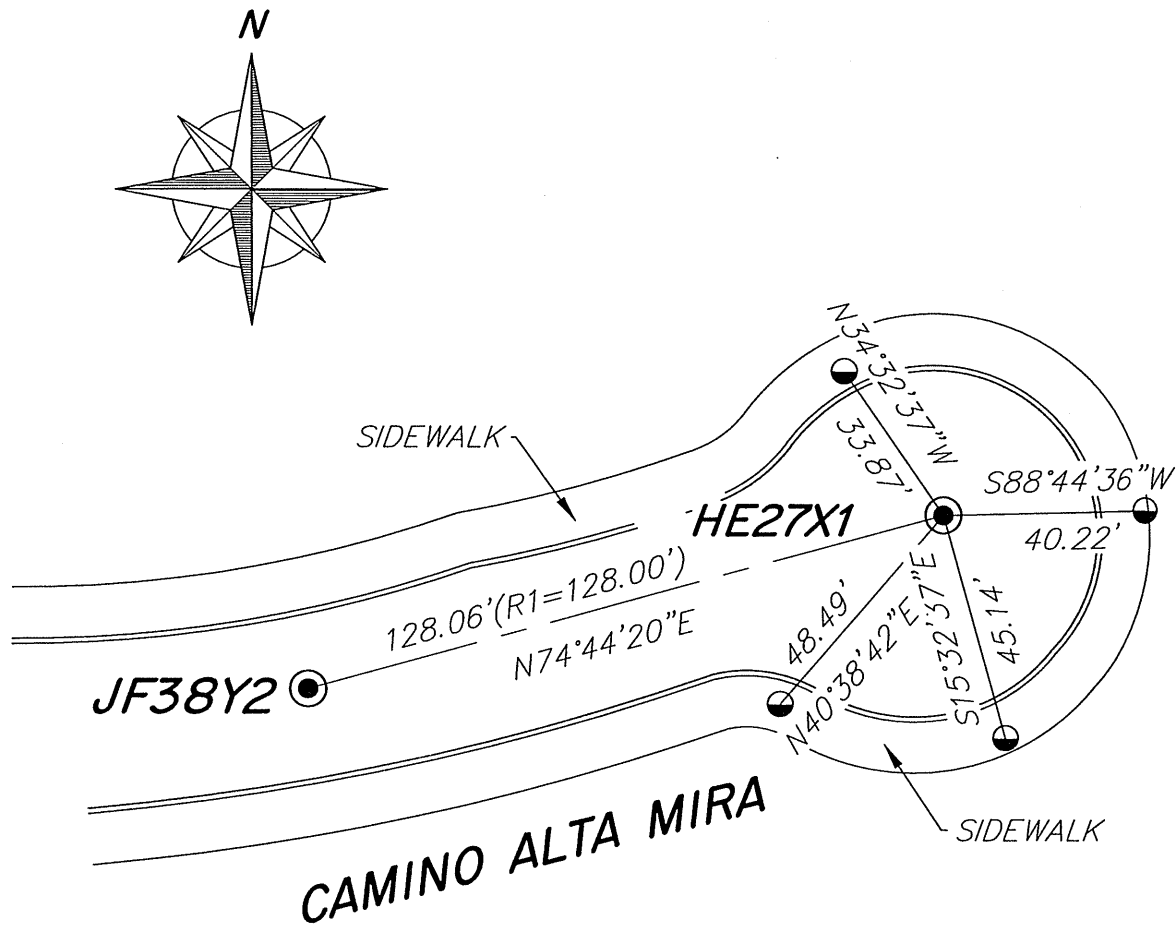
County Surveyor's Comment



SPEC 2322

HE27X1

NO SCALE

LEGEND

● FOUND ALAMEDA COUNTY MONUMENT
AS NOTED ON SHEET 1

● SET CUT "X" UNLESS
OTHERWISE SHOWN

AA##A# ALAMEDA COUNTY MONUMENT ID

REFERENCE

R1 TRACT 4712 BK150 AT PG 75

NOTE THAT BEARINGS ARE
APPROXIMATE AND ARE TO
BE USED FOR ANGLE
CALCULATIONS ONLY.