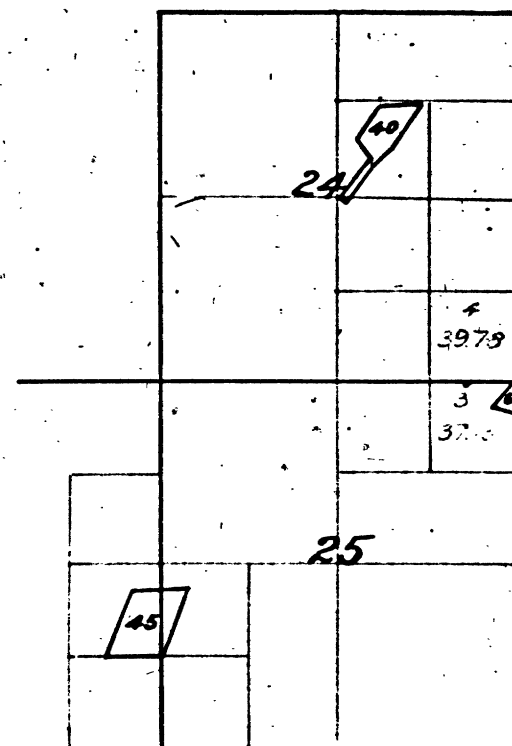


T. 5 N. R. 11 E.  
M. D. M.



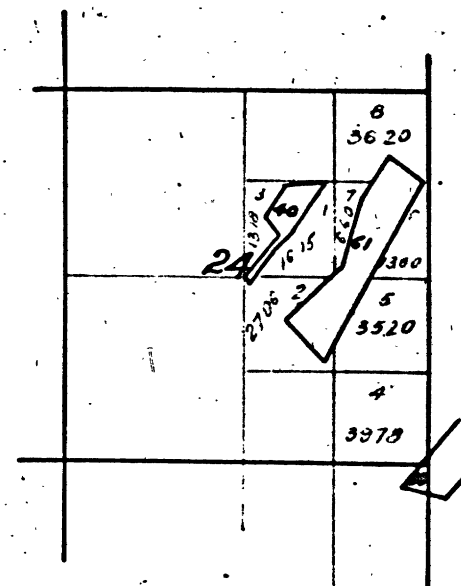
60 Empire Gravel Mine.  
85 Eastern Ext. Green Mountain M. V93-18

The above diagram of Sections 24 & 25 Township 5 North Range 11 East Mount Diablo Meridian, is correctly copied from the original map as amended and on file in this Office.

U.S. Surveyor General's Office,  
San Francisco California  
August 13<sup>th</sup> 1881

*Theo Wagner*  
U.S. Surv. Gen. Cal

T. 5 N. R. 11 E.  
M. D. M.



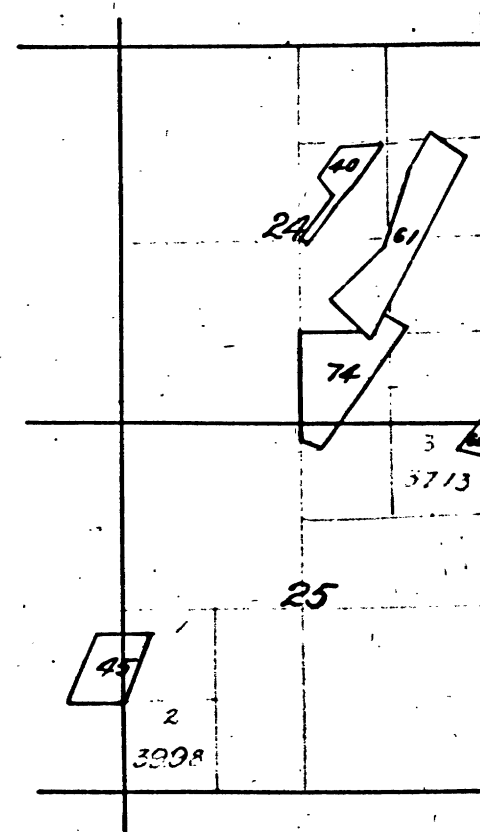
61 Green Mountain Placer Mine. V90-28

The above diagram of Section 24 Township 5 North Range 11 East, Mount Diablo Meridian, is correctly copied from the original map as amended and on file in this Office.

U.S. Surveyor General's Office,  
San Francisco California  
September 8<sup>th</sup> 1881

*Theo Wagner*  
U. S. Surv. Gen. Cal.

T. 5 N. R. 11 E. M. D. M.

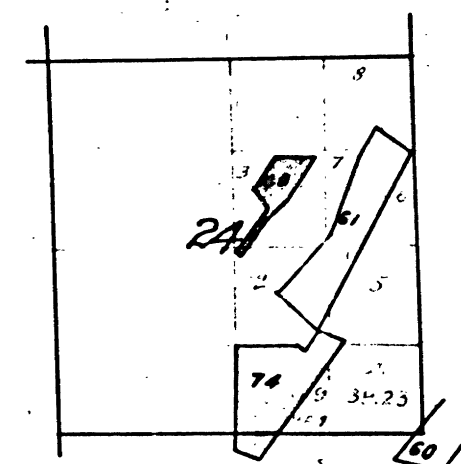


2380 A)  
2380  
74 Rough Diamond Placer Mine V99-21

The above diagram showing amendments to Sec's 24 & 25 Township N° 5 North Range N° 11 East, Mount Diablo Meridian is correctly copied from the original map as amended and on file in this Office.  
Surveyor General's Office,  
San Francisco California  
December 24<sup>th</sup> 1885.

*W. H. Brown*  
U.S. Surv. Gen. Cal

T. 5 N. R. 11 E. M. D. M.



40 Chili Gulch Flaming Co's Placer Mine V5-13  
60 Empire Gravel  
1096-61 Green Mountain  
2380-74 Rough Diamond Tunnel V99-21  
2380 B)

Disagreements in surveys prevent the accurate calculation of other legal subdivisions in this Section.

The above diagram of Section 24 Township N° 5 North Range N° 11 East Mount Diablo Meridian, is correctly copied from the original map as amended and on file in this office.

U.S. Surveyor General's Office  
San Francisco California  
February 4<sup>th</sup> 1890

*R. O. Hammond Jr.*  
U.S. Surv. Gen. Cal

DEPARTMENT OF THE INTERIOR,  
GENERAL LAND OFFICE,  
Washington, D. C. Jan. 4<sup>th</sup> 1890.  
I hereby certify that this is a true copy of the plat of official survey of the lands to which it relates, on file in this office.

*R. O. Hammond Jr.*  
Recorder, General Land Office.

41 422

9

CHAINS

20 40 60 80

T 5 N R 11 E M D

BIM 235