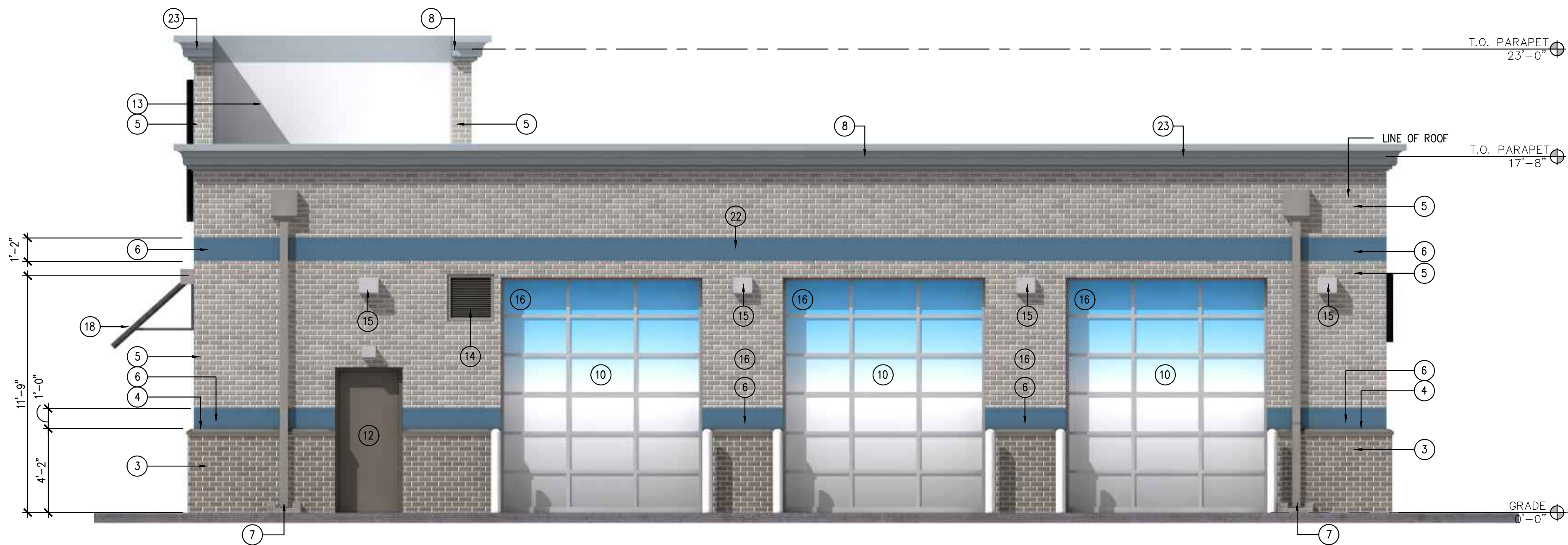


MATERIAL CALCULATIONS			
ACCENT:	90 SF	8 %	
OTHER:	407 SF	37 %	
TOTAL:	1109 SF		

2 WEST ELEVATION  
SCALE: 1/4" = 1'-0"



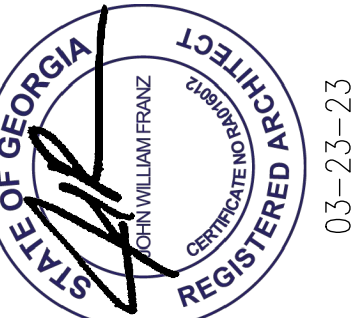
MATERIAL CALCULATIONS			
ACCENT:	90 SF	8 %	
OTHER:	407 SF	37 %	
TOTAL:	1109 SF		

1 NORTH ELEVATION  
SCALE: 1/4" = 1'-0"

#### EXTERIOR FINISH LEGEND

- 1 NOT USED
- 2 3 PART STUCCO SYSTEM  
COLOR: SW #6234 - UNCERTAIN GRAY
- 3 NATURAL THIN BRICK  
COLOR: 507 EMPIRE  
SIZE: KING  
TEXTURE: WIRE  
COURSE: HALF RUNNING BOND  
MANUFACTURER: METROBRICK  
CONTACT: JASON HAMILTON, jhamilton@brick.com
- 4 STUCCO SILL TRIM  
COLOR: TO MATCH METROBRICK 507 EMPIRE
- 5 NATURAL THIN BRICK  
COLOR: 505 MONUMENT  
SIZE: KING  
TEXTURE: WIRE  
COURSE: HALF RUNNING BOND  
MANUFACTURER: METROBRICK  
CONTACT: JASON HAMILTON, jhamilton@brick.com
- 6 STUCCO ACCENT BAND  
COLOR: SW #9149 - INKY BLUE
- 7 SCUPPER & DOWNSPOUT  
COLOR: TO MATCH SW #6234 - UNCERTAIN GRAY
- 8 METAL COPING, REFER A1.2  
COLOR: TO MATCH SW #6234 - UNCERTAIN GRAY
- 9 EXHAUST FAN LOUVER  
COLOR: TO MATCH SW #6234 - UNCERTAIN GRAY
- 10 OVERHEAD ROLLING DOOR  
FRAME: BRUSHED ALUMINUM  
GLASS: CLEAR
- 11 STOREFRONT WINDOW  
FRAME: BRUSHED ALUMINUM  
GLASS: CLEAR
- 12 METAL DOOR  
COLOR: TO MATCH SW #6234 - UNCERTAIN GRAY
- 13 TPO ROOF BEYOND, REFER A1.2
- 14 FAN INTAKE LOUVER  
COLOR: TO MATCH SW #6234 - UNCERTAIN GRAY
- 15 WALL MOUNTED LIGHT FIXTURE, REFER LIGHTING  
LEGEND FOR MOUNTING HEIGHT.
- 16 SIGNAGE BY TENANT. SEPARATE PERMIT, FOR  
REFERENCE ONLY.
- 17 HOSE BIB  
REFER PLUMBING
- 18 METAL AWNING  
COLOR: MCLEROY METAL CHARCOAL
- 19 CONTROL JOINT
- 20 BOLLARD  
COLOR: TO MATCH SW #4084 - SAFETY YELLOW
- 21 TOILET EXHAUST, REFER MECHANICAL DRAWINGS
- 22 PIT VENTILATION DAMPER  
REFER MECHANICAL  
COLOR: TO MATCH SW #9149 - INKY BLUE
- 23 STUCCO CORNICE  
COLOR: SW #6324 - UNCERTAIN GRAY

NOTE: UTILITY BOXES AND CONDUIT SHALL BE PAINTED  
TO MATCH BUILDING COLOR.



**JOHN FRANZ**  
architect

(817) 737-9922  
4055 International Plaza Suite 100  
Fort Worth, Texas 76109

**STRICKLAND BROTHERS**  
4445 NELSON BROGDON  
BUFORD, GA

Revisions: 2 / 03-23-2023 / BY RCA  
CITY COMMENTS

File Name: 22236 - A2.1  
Project No: 22236  
Date: 02/10/23  
Drawn By: RCA  
Checked By: TI

SHEET  
**A2.1A**  
COLOR BUILDING  
ELEVATIONS