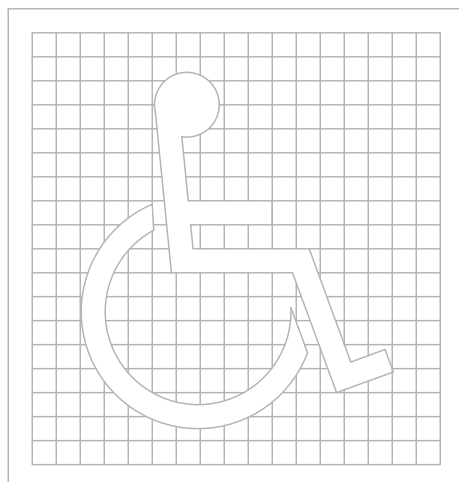
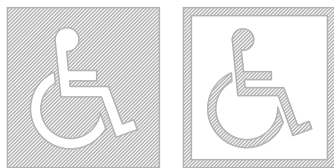


SITE DEVELOPMENT:

1. SURFACE SLOPES OF PARKING SPACES FOR THE PHYSICALLY DISABLED SHALL NOT EXCEED 1/4-INCH PER FOOT IN ANY DIRECTION.
2. PEDESTRIAN WAYS THAT ARE ACCESSIBLE TO THE PHYSICALLY DISABLED SHALL BE PROVIDED FROM EACH DISABLED PARKING SPACE TO RELATED FACILITIES, INCLUDING CURBS CUTS OR RAMPS AS REQUIRED.
3. THE SURFACE OF EACH PARKING SPACE SHALL HAVE A SURFACE IDENTIFICATION DUPLICATING THE SYMBOL OF ACCESSIBILITY CONSISTING OF A WHITE FIGURE ON A BLUE BACKGROUND, AT LEAST 3 FEET SQUARE

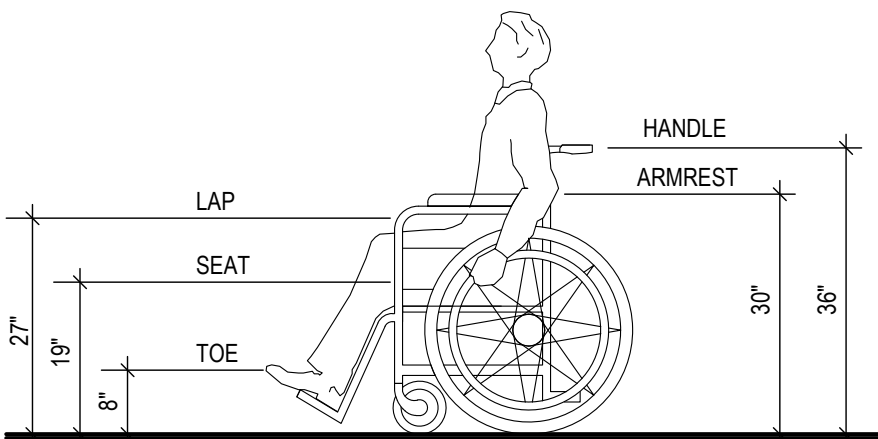


PROPORTIONS
INTERNATIONAL SYMBOL OF ACCESSIBILITY



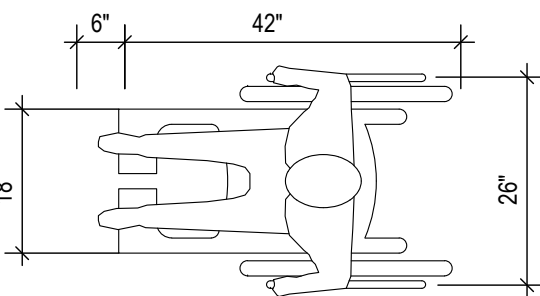
DISPLAY CONDITIONS
INTERNATIONAL SYMBOL OF ACCESSIBILITY

1



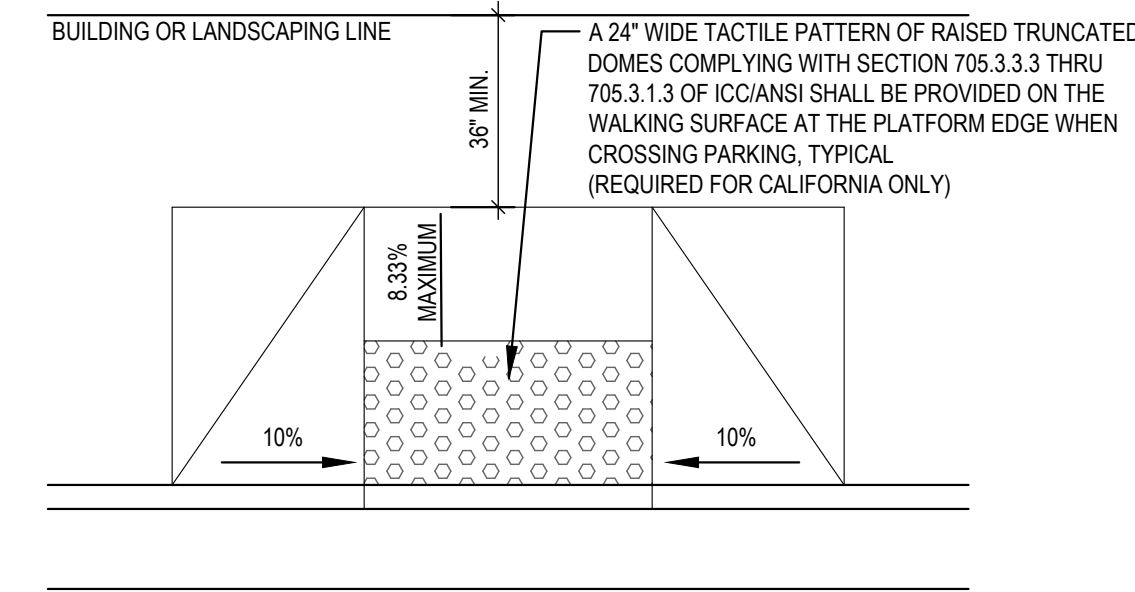
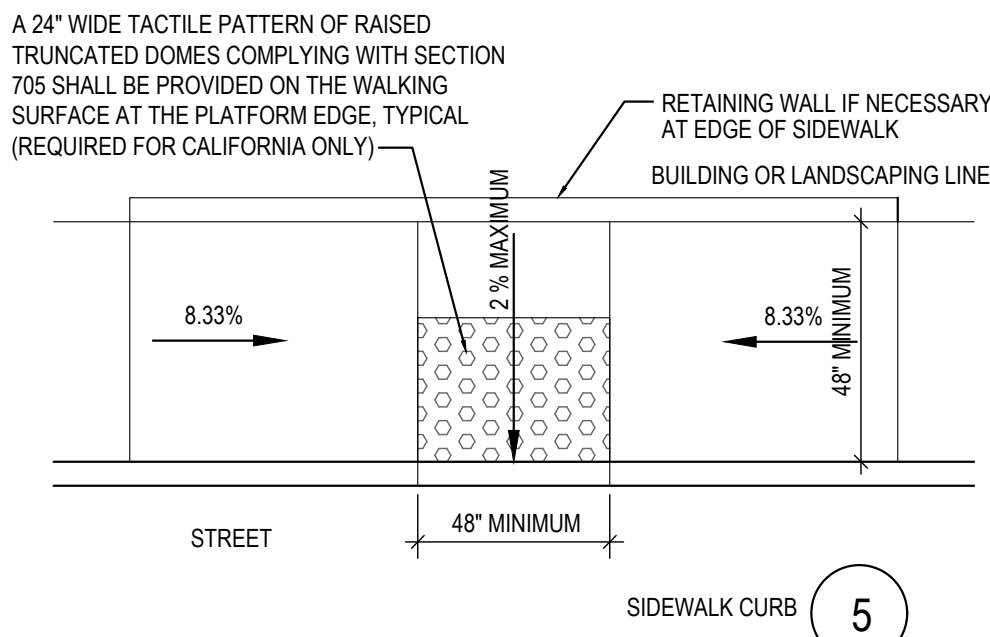
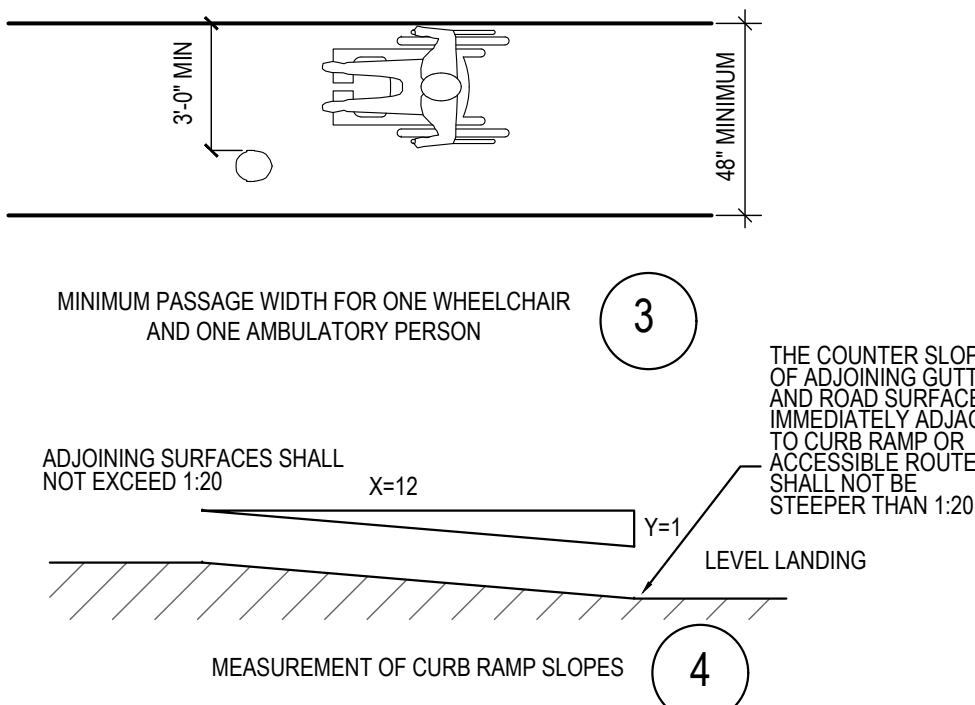
DIMENSIONS OF ADULT-SIZED WHEELCHAIRS

2



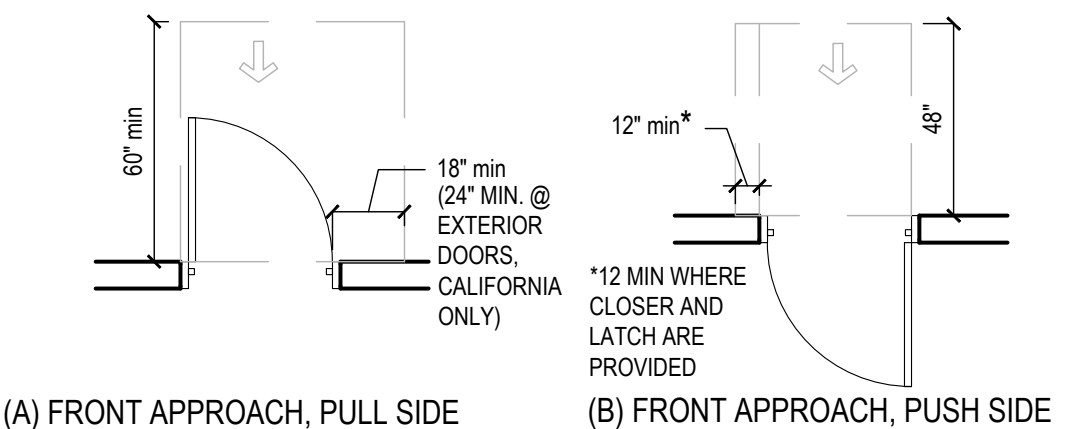
CURB RAMPS, WALKS AND SIDEWALKS:

4. WALKS AND SIDEWALKS SHALL HAVE CONTINUOUS COMMON SURFACE, NOT INTERRUPTED BY STEPS OR BY ABRUPT CHANGES IN LEVEL EXCEEDING 1/2" AND SHALL BE A MINIMUM OF 36" IN WIDTH PER ADA. 48" MIN. IS RECOMMENDED, 48" MIN. IS REQUIRED FOR CALIFORNIA
5. WHEN THE SLOPE IN THE DIRECTION OF TRAVEL OF ANY WALK EXCEEDS 1 VERTICAL TO 20 HORIZONTAL (5% GRADIENT) IT SHALL COMPLY WITH THE PROVISIONS FOR PEDESTRIAN RAMPS.
6. SURFACE CROSS SLOPES SHALL NOT EXCEED 1.5% PER FOOT.
7. ABRUPT CHANGES IN LEVEL ALONG ANY ACCESSIBLE ROUTE SHALL NOT EXCEED 1/2". WHEN CHANGES IN LEVELS DO OCCUR, THEY SHALL NOT BE BEVELED WITH A SLOPE NOT GREATER THAN 1:2 EXCEPT THAT LEVEL CHANGES NOT EXCEEDING 1/2" MAY BE VERTICAL
8. WHEN CHANGES IN LEVELS GREATER THAN 1/2" ARE NECESSARY, THEY SHALL COMPLY WITH THE REQUIREMENTS FOR CURB RAMPS & PEDESTRIAN RAMPS.
9. NOT USED
10. CURB RAMPS SHALL BE CONSTRUCTED AT EACH CORNER OF STREET INTERSECTIONS AND WHERE A PEDESTRIAN WAY CROSSES A CURB.
11. CURB RAMPS SHALL BE A MINIMUM OF 4 FEET IN WIDTH AND SHALL LIE GENERALLY, IN A SINGLE SLOPED PLANE, WITH A MINIMUM OF SURFACE WARPING AND CROSS SLOPE.
12. THE SLOPE OF CURB RAMPS SHALL NOT EXCEED 1 VERTICAL TO 7.5 HORIZONTAL. THE SLOPE OF THE FANNED OR FLARED SIDES OF CURB RAMPS SHALL NOT EXCEED 1 VERTICAL TO 7.5 HORIZONTAL.
13. A 1.5% MAXIMUM SLOPE LANDING 4 FEET DEEP SHALL BE PROVIDED AT THE UPPER END OF EACH CURB RAMP OVER ITS FULL WIDTH TO PERMIT SAFE EGRESS FROM THE RAMP SURFACE.
14. NOT USED
15. NOT USED
16. NOT USED

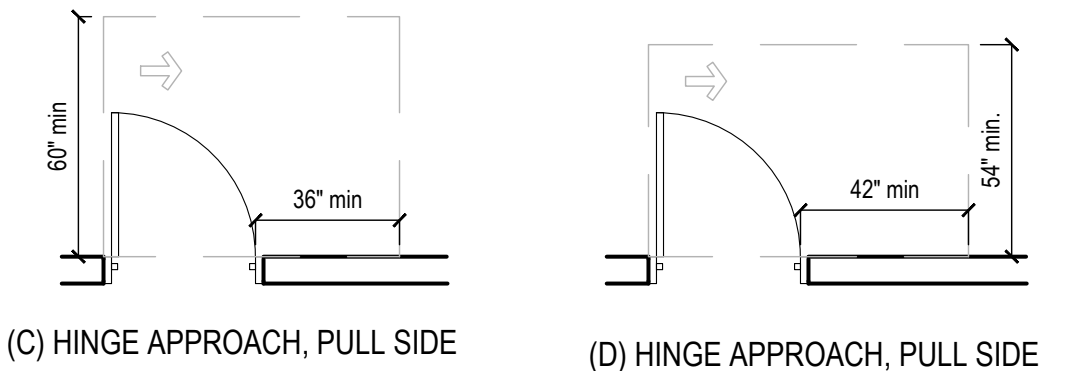


SIDEWALK CURB

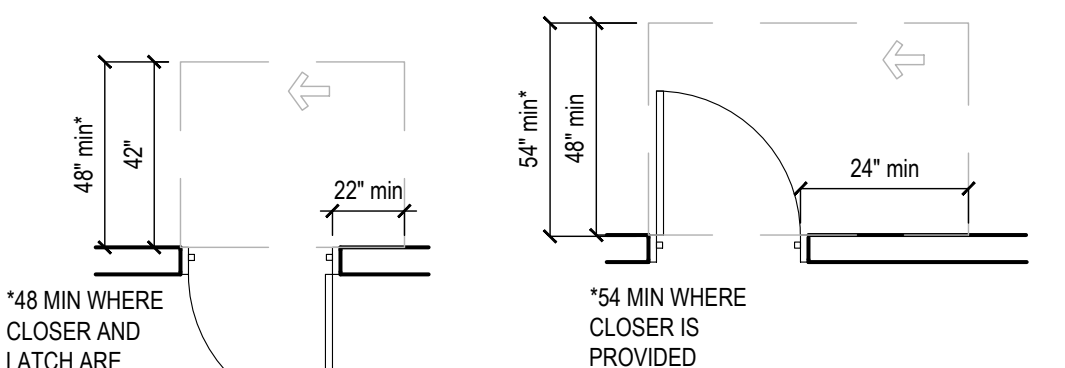
6



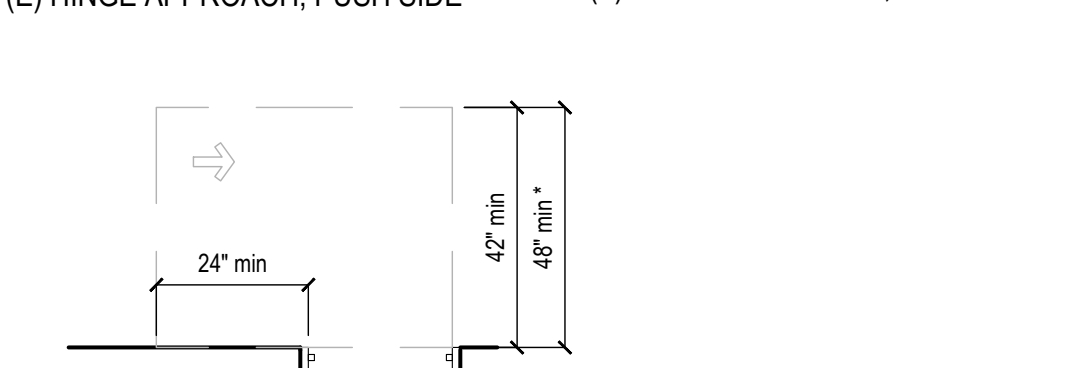
(A) FRONT APPROACH, PULL SIDE



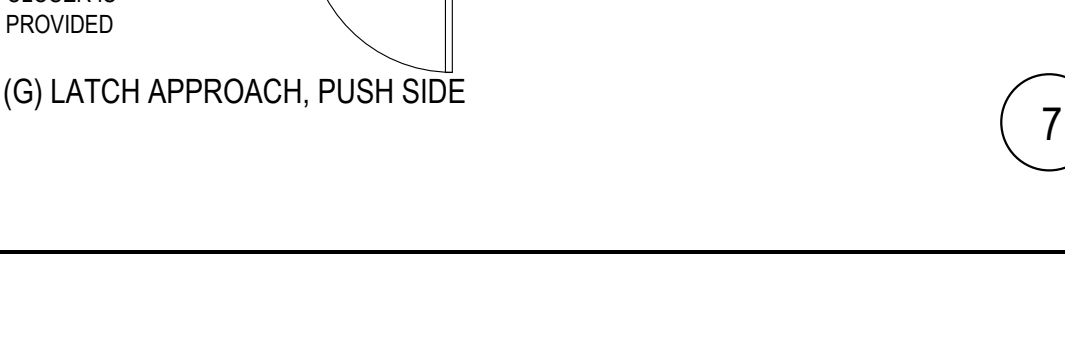
(B) FRONT APPROACH, PUSH SIDE



(C) HINGE APPROACH, PULL SIDE



(D) HINGE APPROACH, PUSH SIDE



(E) LATCH APPROACH, PULL SIDE

(F) LATCH APPROACH, PUSH SIDE

(G) LATCH APPROACH, PUSH SIDE

(H) LATCH APPROACH, PUSH SIDE

(I) LATCH APPROACH, PUSH SIDE

(J) LATCH APPROACH, PUSH SIDE

(K) LATCH APPROACH, PUSH SIDE

(L) LATCH APPROACH, PUSH SIDE

(M) LATCH APPROACH, PUSH SIDE

(N) LATCH APPROACH, PUSH SIDE

(O) LATCH APPROACH, PUSH SIDE

(P) LATCH APPROACH, PUSH SIDE

(Q) LATCH APPROACH, PUSH SIDE

(R) LATCH APPROACH, PUSH SIDE

(S) LATCH APPROACH, PUSH SIDE

(T) LATCH APPROACH, PUSH SIDE

(U) LATCH APPROACH, PUSH SIDE

(V) LATCH APPROACH, PUSH SIDE

(W) LATCH APPROACH, PUSH SIDE

(X) LATCH APPROACH, PUSH SIDE

(Y) LATCH APPROACH, PUSH SIDE

(Z) LATCH APPROACH, PUSH SIDE

(AA) LATCH APPROACH, PUSH SIDE

(AB) LATCH APPROACH, PUSH SIDE

(AC) LATCH APPROACH, PUSH SIDE

(AD) LATCH APPROACH, PUSH SIDE

(AE) LATCH APPROACH, PUSH SIDE

(AF) LATCH APPROACH, PUSH SIDE

(AG) LATCH APPROACH, PUSH SIDE

(AH) LATCH APPROACH, PUSH SIDE

(AI) LATCH APPROACH, PUSH SIDE

(AJ) LATCH APPROACH, PUSH SIDE

(AK) LATCH APPROACH, PUSH SIDE

(AL) LATCH APPROACH, PUSH SIDE

(AM) LATCH APPROACH, PUSH SIDE

(AN) LATCH APPROACH, PUSH SIDE

(AO) LATCH APPROACH, PUSH SIDE

(AP) LATCH APPROACH, PUSH SIDE

(AQ) LATCH APPROACH, PUSH SIDE

(AR) LATCH APPROACH, PUSH SIDE

(AS) LATCH APPROACH, PUSH SIDE

(AT) LATCH APPROACH, PUSH SIDE

(AU) LATCH APPROACH, PUSH SIDE

(AV) LATCH APPROACH, PUSH SIDE

(AW) LATCH APPROACH, PUSH SIDE

(AX) LATCH APPROACH, PUSH SIDE

(AY) LATCH APPROACH, PUSH SIDE

(AZ) LATCH APPROACH, PUSH SIDE

