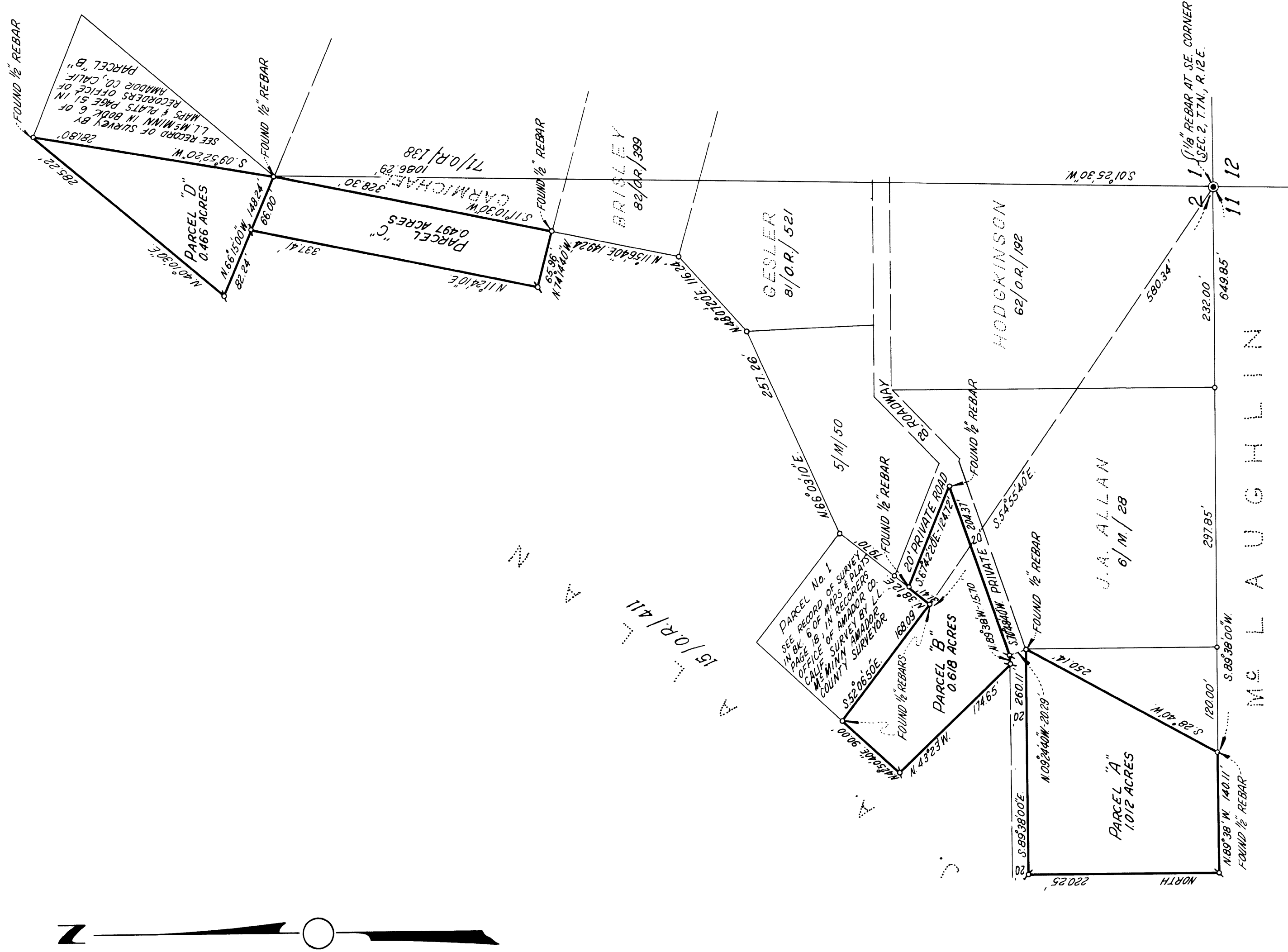


RECORD OF SURVEY
PROPERTY OF JOHN A. ALLAN
A PORTION OF THE SW1/4 OF SECTION 1 & A PORTION OF THE
S.E. 1/4 OF SECTION 2, T.7N, R.12E, MDM.

AMADOR COUNTY, CALIFORNIA

DECEMBER, 1960 SCALE: 1"=100'

RAUPP, CHRISTENSEN & KENDALL
SURVEYORS & ENGINEERS



LEGEND:
Set 1/2 steel rod tagged "S. 2720"

NOTE:
The meridian of this survey is identical with the meridian of that certain official map entitled "Property of John A. Allan" recorded in the office of the Recorder of Amador County on January 15, 1960 in Book 6 of Maps and Plats at Page 51.

SURVEYORS CERTIFICATE

This map correctly represents a survey made by me or under my direction in conformance with the requirements of Chapter 15 of Division 3 of the Business and Professions Code at the request of John A. Allan in December, 1960.

William H. Raupp
County Surveyor of
Amador County

COUNTY SURVEYORS CERTIFICATE

This map has been examined for conformance with the requirements of Chapter 15 of Division 3 of the Business and Professions Code this 28th day of December, 1960.

August L. McMiner
County Surveyor of
Amador County

COUNTY RECORDERS CERTIFICATE

Filed for record this 29th day of December 1960, at 8:30 a.m. in Book 7 of Maps & Plats at page 25, at the request of William H. Raupp.

Fee: \$ 5.00 Paid.

Anthony Dutton
Recorder of Amador County