

COMBINACION DE CICLOS CON REVERSIONES EN DEFENSAS Y MATES QUE DETERMINAN LAS CORRESPONDIENTES DENOMINACIONES DE LOS TEMAS DESARROLLADOS.

| Tema | Ensayos | Amenaza | Defensas 1--/1-- | Mates. 2./2. | Refutacion |
|--|----------|---------|---------------------|-----------------|------------|
| <u>BANNY</u> | 1.A ? | - | a | C | b! |
| | 1.B ? | - | b | C | a! |
| | SOL.1. 1 | x | a/b | A/B | |
| <u>HANNELIUS - BANNY</u> (en doble secuencia) | 1.A ? | C | - | - | a! |
| | 1.B? | D | - | - | b! |
| | 1. ? | x | a/b | C/D | ! |
| | SOL.1. 1 | x | a/b | B/A | |
| <u>DJURASEVIC</u> | SOL.1.A | B | a | C | |
| | SOL.1.B | C | a | A | |
| (Este tema solo se ha realizado en gemelo según el artículo en el que he tomado su referencia) | | | | | |
| <u>DOMBROVSKI</u> | 1. ? | A | b | x | a! |
| | 1. ? | B | a | x | b! |
| | SOL.1. 1 | - | a/b | A/B | |
| <u>DOMBROVSKI-HANNELIUS</u> (4 fases) | 1. ? | A | - | - | a/b! |
| | 1. ? | B | a | A | ! |
| | 1. ? | B | b | A | ! |
| | SOL.1. 1 | x | a/b | B/A | |
| <u>DOMBROVSKI</u> (5 fases) | J.A. | - | - | A/B | |
| | 1. ? | C | - | - | a! |
| | 1. ? | D | - | - | b! |
| | 1. ? | E | - | - | c! |
| | SOL.1. 1 | A/B | a/b/c | D/E/C. | |
| <u>DOMBROVSKI-LACNY</u> | 1. ? | A | a | B | ! |
| | SOL.1. 1 | B | a/b | C/A | |
| Otra variante : | 1. ? | A | a/b | B/C | ! |
| | 1. ? | B | a/b | C/A | ! |
| | SOL.1. 1 | C | a/b | A/B | |
| <u>DOMBROVSKI-HANNELIUS-VLADIMIROV</u> | 1. ? | A | a | C | b! |
| | 1.B? | - | b | D | a! |
| | SOL.1. 1 | x | a/b | A/B | |

...../.....

COPIA PARA BREV

Tema

Ensayos

Amenaza

Defensas

Mates

Refutacion

1--/1-- 2./2.

DOMBROVSKI-LE GRAND-
HANNELIUS

| | | | | |
|-----------|---|-----|-----|----|
| 1. ? | A | a | - | bl |
| 1. ? | B | a/b | C | ! |
| SOL. 1. ! | C | a/b | B/A | |

DOMBROVSKI-RUCHKLIS

| | | | | |
|-----------|---|-----|-----|---|
| 1. ? | A | a/b | C/Y | ! |
| 1. ? | B | a/b | Z/C | ! |
| SOL. 1. ! | x | a/b | B/A | |

DOMBROVSKI-ZAGORUJKO

| | | | | |
|-----------|---|-----|-----|---|
| J.A. | - | a/b | A/B | |
| 1. ? | A | a/b | C/D | ! |
| SOL. 1. ! | B | a/b | E/F | |

DOMBROVSKI-SALAZAR
ZAGORUJKO

| | | | | |
|-----------|---|-----|-----|---|
| 1.A? | - | a/b | B/C | ! |
| 2. ? | C | a/b | D/E | ! |
| SOL. 1.B! | x | a/b | A/F | |

EROCHIN

| | | | | |
|-----------|---|---|---|---|
| 1.A? | - | a | B | ! |
| SOL. 1. ! | B | a | A | |

tras variantes

1ª forma

| | | | | |
|-----------|---|-----|-----|---|
| 1.A? | B | a/b | C/D | ! |
| SOL. 1.D! | C | a/b | A/B | |

2ª forma

| | | | | |
|-----------|---|-----|-----|---|
| 1.A? | C | a/b | C/D | ! |
| SOL. 1.D! | B | a/c | A/C | |

3ª forma

| | | | | |
|-----------|---|-----|-----|---|
| 1.A? | C | a | B | ! |
| SOL. 1. ! | B | a/b | A/C | |

HANNELIUS

| | | | | |
|-----------|---|-----|-----|----|
| 1. ? | A | - | - | al |
| 1. ? | B | - | - | bl |
| SOL. 1. ! | x | a/b | B/A | |

HANNELIUS-DOMBROVSKI

| | | | | |
|-----------|---|-----|-----|----|
| 1. ? | A | a | C | bl |
| 1. ? | B | b | C | al |
| SOL. 1. ! | x | a/b | B/A | |

HANNELIUS-DOMBROVSKI
(6 fases)

| | | | | |
|------|---|-----|-----|----|
| J.A. | - | c/d | A/B | |
| 1. ? | A | - | - | d! |
| 1. ? | B | - | - | c! |
| 1. ? | A | - | - | al |
| 1. ? | B | - | - | bl |

Variante sin J.A.

| | | | | |
|-----------|---|-----|-----|----|
| SOL. 1. ! | x | a/b | A/B | |
| 1. ? | A | - | - | al |
| 1. ? | B | - | - | bl |
| 1. ? | B | - | - | al |
| 1. ? | A | - | - | bl |
| SOL. 1. ! | x | a/b | A/B | |

.... /

| ===== | | | | | |
|----------------------------|---------|---------|---------------------|----------------|------------|
| 35 Tema | Ensayos | Amenaza | Defensas 1--/1-- | Mates 2./2. | Refutacion |
| ===== | | | | | |
| <u>LE GRAND</u> | 1. ? | A | a | B | ! |
| SOL. 1. ! | | B | a | A | |
| <u>LE GRAND</u> | | | | | |
| <u>(3 fases)</u> | 1. ? | A | a | B | ! |
| | 1. ? | B | a | C | ! |
| SOL. 1. ! | | C | a | A | |
| <u>LE GRAND</u> | | | | | |
| <u>(4 fases)</u> | 1. ? | A | a | B | ! |
| | 1. ? | B | a | C | ! |
| | 1. ? | C | a | D | ! |
| SOL. 1. ! | | D | a | A | |
| Otra variante | | | | | |
| <u>LE GRAND</u> | 1. ? | A | a | C | b! |
| | 1. ? | B | b | C | a! |
| SOL. 1. ! | | C | a/b | A/B | |
| <u>LE GRAND-DOMBROVSKI</u> | 1. ? | A/B | - | - | a! |
| | 1. ? | A | a | B | ! |
| | 1. ? | B | a | A | ! |
| SOL. 1. ! | | x | c/d | A/B | |
| <u>LE GRAND-HANNELIUS</u> | 1. ? | A | c | B | a! |
| | 1. ? | B | d | A | b! |
| SOL. 1. ! | | x | a/b | B/A | |
| <u>LE GRAND-ZAGORUJKO</u> | 1. ? | - | a/b | C/D | ! |
| | 1. ? | A | a/b | B/E | ! |
| SOL. 1. ! | | B | a/b | A/F | |
| <u>LE GRAND-RUCHKLIS</u> | | | | | |
| <u>ZAGORUJKO</u> | J.A. | - | a/b | A/B | |
| | 1. ? | A | c/b | B/C | ! |
| SOL. 1. ! | | B | d/a | A/C | |
| <u>PSEUDO-LE GRAND</u> | 1. ? | A | a | B | ! |
| SOL. 1. ! | | B | b | A | |
| <u>SALAZAR</u> | 1.A? | - | a | B | ! |
| SOL. 1.B | | - | a | A | |
| <u>SALAZAR-DOMBROVSKI</u> | 1.A? | X | a | B | b! |
| | 1.B? | Y | a | A | c! |
| SOL. 1. ! | | - | b/c | X/Y | |

...../.....

| ===== | | | | | |
|----------------------------|-----------|---------|----------|-------|--------------|
| Tema | Ensayos | Amenaza | Defensas | Mates | Refutaciones |
| | | | 1--/1-- | 2./2. | |
| ===== | | | | | |
| <u>SALAZAR-LE GRAND</u> | 1.A? | C | a | B | ! |
| | 1. ? | D | b | C | ! |
| <u>Otra variante</u> | SOL. 1.B! | C | a/b | A/D | |
| | 1.A? | B | a/b | C/D | ! |
| <u>Otra variante</u> | SOL. 1.C! | D | a/b | A/B | |
| | 1.A? | B | a/b | C/D | ! |
| | SOL. 1.D! | C | a/b | B/A | |
| <u>RUDEENKO</u> | J.A. | - | a/b | A/B | |
| | 1. ? | A/B | c/d | C/D | ! |
| | SOL. 1. ! | x | a/b | E/F | |
| <u>UKRANIA</u> | 1.A? | B | a | C | ! |
| | 1.D? | x | b | B | ! |
| | SOL. 1.C! | B | a/b | A/D | |
| <u>VLADIMIROV</u> | 1.A? | - | - | - | a! |
| | 1.B? | - | - | - | b! |
| | SOL. 1. ! | x | a/b | A/B | |
| <u>VLADIMIROV-LE GRAND</u> | 1.A? | B | a | - | ! |
| | 1. ? | C | b | B | ! |
| | SOL. 1. ! | B | a/b | A/C | |
| <u>VLADIMIROV-SALAZAR</u> | 1.A? | - | a | C | b! |
| | 1.B? | - | b | D | a! |
| | SOL. 1.C! | - | a/b | A/B | |
| <u>VLADIMIROV-SALAZAR</u> | 1.A? | - | a/b | B/C | ! |
| <u>ZAGORUJKO</u> | 1.C? | - | a/b | D/E | ! |
| | SOL. 1.B! | - | a/b | A/F | |
| ===== | | | | | |

COMBINACIONES DE CICLOS CON REVERSIONES EN DEFENSAS Y MATES QUE DETERMINAN LAS CONSIGUIENTES DENOMINACIONES DE LOS TEMAS DESARROLLADOS.

| 5 ^a Temas combinados | Ensayos | Amenaza | Defensas | Mates | Refu- tac. | Diagr ejemp |
|---|---------|---------|----------|-----------|---------------|----------------|
| | | | 1--/1-- | 2.-/2.- | | |
| <u>BANNY - SALAZAR *</u> | 1.A? | - | a | C. | b! | 1. |
| | 1.B? | - | b | C. | a! | |
| SOL. | 1.C! | - | a/b | A/B. | | |
| *Prácticamente igual a un BANNY básico | | | | | | |
| <u>DOMBROVSKI - HANNELIUS</u> | * 1. ? | A. | - | - | a! | 2. |
| | * 1. ? | B. | - | - | b! | |
| SOL. | ** 1. ! | - | a/b | B/A. | | |
| * DOMBROVSKI ** HANNELIUS | | | | | | |
| <u>DOMBROVSKI - LACNY</u> | * J.A. | | a/b | A/B. | | 3. |
| | * 1. ? | A. | - | - | a! | |
| | * 1. ? | B. | - | - | b! | |
| | ** 1. ? | A. | a/b | C/B. | ! | |
| SOL. | ** 1. ! | B. | a/b | A/C. | | |
| * DOMBROVSKI ** LACNY | | | | | | |
| <u>DOMBROVSKI - LE GRAND</u> | 1. ? | A/B/C. | - | - | a! | 4. |
| | 1. ? | A/B. | * a | * C. | ! | |
| | 1. ? | C. | * a | * A. | ! | |
| SOL. | 1. ! | C. | * a | * B. | | |
| DOMBROVSKI - Conjunto total * LE GRAND del juego | | | | | | |
| <u>DOMBROVSKI-PSEUDO-LE GRAND</u> | * 1. ? | A. | b | - | a! | 5. |
| | 1. ? | * B. | ** a | ** C. | b! | |
| | ** 1. ? | C. | - | D. | ! | |
| SOL. | * 1. ! | - | a/b | A/B. | | |
| * DOMBROVSKI ** PSEUDO-LE GRAND | | | | | | |
| <u>DOMBROVSKI - RUCHKLIS</u> | * 1. ? | A. | b | B. | a! | 6. |
| | * 1. ? | B. | a | A. | b! | |
| SOL. | ** 1. ! | - | a/b/c/d | C/D/A/B. | | |
| * DOMBROVSKI ** RUCHKLIS | | | | | | |
| <u>DOMBROVSKI - SALAZAR</u> | * 1. ? | A. | a | - | b! | 7. |
| | ** 1.B? | - | b | C. | * a! | |
| SOL. | 1.C! | - | * a/b ** | * A/B. ** | | |
| * DOMBROVSKI ** SALAZAR | | | | | | |

.../...

COMBINACIONES DE CICLOS CON REVERSIONES EN DEFENSAS Y MATES QUE DETERMINAN LAS CONSIGUIENTES DENOMINACIONES DE LOS TEMAS DESARROLLADOS.

| Temas combinados | Ensayos | Amenaza | Defensas | Mates | Refutac. | Diagr ejemp |
|--|---|---------|--------------------------------|--------------------------------|----------|----------------|
| | | | 1--/1-- | 2.-/2.- | | |
| <u>DOMBROVSKI - SALAZAR</u> <u>ZAGORUJKO</u> | 1. ^{xx} C? | - | x _{a/b} ^{xx} | x _{A/B} ^{xx} | ! | 8. |
| | 1. ? | A. | a/b | D/E. | ! | |
| SOL. | 1. ^{xx} B! | - | xx _{a/b} | F/C. ^{xx} | | |
| | x DOMBROVSKI xx SALAZAR ZAGORUJKO - Conjunto total del juego | | | | | |
| <u>DOMBROVSKI - VLADIMIROV</u> | x 1. ? | A. | - | - | a! | 9. |
| | xx 1.B? | - | - | - | b! | |
| SOL. | xxx 1. ! | - | a/b | A/B. | | |
| | x DOMBROVSKI xx VLADIMIROV } xxx | | | | | |
| <u>DOMBROVSKI - VLADIMIROV</u> <u>HANNELIUS</u> | x 1. ? | A. | b | - | a! | 10. |
| | xx 1.B? | - | a | - | b! | |
| SOL. | xxx 1. ! | - | b/a | A/B. | | |
| | x DOMBROVSKI xx VLADIMIROV xxx HANNELIUS | | | | | |
| <u>HANNELIUS - BANNY</u> | 1.C? | A. | - | - | a! | 11. |
| | 1.D? | B. | - | - | b! | |
| | x 1. ? | - | a/b | B/A. | ! | |
| SOL. | xx 1. ! | - | a/b | D/C. | | |
| | x HANNELIUS xx BANNY | | | | | |
| <u>HANNELIUS-BANNY-SALAZAR</u> | xx 1.A? | B. | - | - | a! | 12. |
| | xx 1.B? | A. | a | C. | b! | |
| SOL. | 1. ^{xx} C! | - | a/b | B/A. | | |
| | x HANNELIUS xx BANNY-SALAZAR | | | | | |
| <u>HANNELIUS - DOMBROVSKI</u> | xx J.A. | | a/b | A/B. | | 13. |
| | x 1. ? | A. | - | - | b! | |
| | x 1. ? | B. | - | - | a! | |
| SOL. | x 1. ! | - | a/b | B/A. | | |
| | x HANNELIUS xx DOMBROVSKI | | | | | |
| <u>HANNELIUS - PSEUDO-LE GRAND</u> | x 1. ? | A. | - | - | a! | 14. |
| | x 1. ? | B. | - | - | b! | |
| | x 1. ? | - | a/b | B/A. | ! | |
| SOL. | xx 1. ! | - | a/b | C/D. | | |
| | x HANNELIUS xx PSEUDO-LE GRAND | | | | | |

.../...

7

COMBINACIONES DE CICLOS CON REVERSIONES EN DEFENSAS Y MATES QUE DETERMINAN LAS CONSIGUIENTES DENOMINACIONES DE LOS TEMAS DESARROLLADOS.

| Temas combinados | Ensayos | Amenaza | Defensas | Mates | Refutac. | Diagrama ejemplar |
|--|-------------------------------------|---------|--------------------------------|--------------------------------|----------|-------------------|
| | | | 1--/1-- | 2.-/2.- | | |
| <u>HANNELIUS - RUCHKLIS</u> | ** J.A. | | c/d | B/A. | | 15. |
| | x 1. ? | A. | - | - | a! | |
| | x 1. ? | B. | - | - | b! | |
| | SOL. 1. ! | - | $\frac{a/b}{x} \frac{c/d}{xx}$ | $\frac{B/A}{x} \frac{C/D}{xx}$ | | |
| | x HANNELIUS xx RUCHKLIS | | | | | |
| <u>HANNELIUS - RUCHKLIS</u> - otra variante - | x J.A. | | b/a | A/B. | | 16. |
| | x 1. ? | A. | - | - | a! | |
| | x 1. ? | B. | - | - | b! | |
| | SOL. xx 1. ! | - | c/d | B/A. | | |
| | x HANNELIUS xx RUCHKLIS | | | | | |
| <u>HANNELIUS - SUSCHKOV</u> | xx 1. ? | A. | - | B. | x a! | 17. |
| | xx 1. ? | B. | - | A. | x b! | |
| | SOL. x 1. ! | - | a/b | B/A. | | |
| | x HANNELIUS xx SUSCHKOV | | | | | |
| <u>LE GRAND - DOMBROVSKI</u> | x 1. ? | A. | c | B. | xx a! | 18. |
| | x 1. ? | B. | c | A. | xx b! | |
| | SOL. xx 1. ! | - | a/b | A/B. | | |
| | x LE GRAND xx DOMBROVSKI | | | | | |
| <u>LE GRAND - HANNELIUS</u> | 1. ? | A. | b | C. | a! | 19. |
| | 1. ? | B. | a | C. | b! | |
| | SOL. xx 1. ! | C. | b/a | A/B. | | |
| | LE GRAND xx HANNELIUS | | - Conjunto total del juego | | | |
| <u>LE GRAND - RUCHKLIS</u> <u>ZAGORUJKO</u> | x J.A. | | a/b | A/B. | | 20. |
| | x 1. ? | A. | c | B. | a! | |
| | x 1. ? | B. | c | A. | ! | |
| | SOL. xx 1. ! | - | d/e/a | B/A/C. | | |
| | x LE GRAND xx RUCHKLIS-ZAGORUJKO | | - Conjunto total del juego | | | |
| <u>LE GRAND - RUDENKO</u> <u>ZAGORUJKO</u> | xx 1. ? | A/B. | a/b | C/- | ! | 21. |
| | 1. ? | C. | x a/b | x A/- | ! | |
| | SOL. 1. ! | C. | x a/b | x B/- | | |
| | x LE GRAND xx RUDENKO | | - Conjunto total del juego | | | |

.../...

8

COMBINACIONES DE CICLOS CON REVERSIONES EN DEFENSAS Y MATES QUE DETERMINAN LAS CONSIGUIENTES DENOMINACIONES DE LOS TEMAS DESARROLLADOS.

| Temas combinados | Ensayos | Amenaza | Defensas | Mates | Refu- tac. | Diagr ejemp |
|---|----------|---------|----------|---------|---------------|----------------|
| | | | 1--/1-- | 2.-/2.- | | |
| <u>LE GRAND - SALAZAR</u> | 1. A? | B. | a/b | *C/D. | ! | 22. |
| SOL. 1. C! | | D. | a/b | *A/B. | | 22-b |
| * SALAZAR LE GRAND - Conjunto total del juego | | | | | | |
| <u>LE GRAND - SALAZAR</u> <u>(3 fases)</u> | * 1. A? | C. | a | B. | ! | 23. |
| | ** 1. ? | D. | b | C. | ! | |
| SOL. 1. B! | | C. | *a/b** | *A/D.** | | |
| * SALAZAR ** LE GRAND | | | | | | |
| <u>LE GRAND - SALAZAR</u> <u>RUDENKO</u> | 1. A? | - | *a/- | *B/C. | ! | 24. |
| | ** 1. C? | D/E. | a/a | -/- | ! | |
| | 1. B? | D.** | **b/a* | **E/A.* | ! | |
| SOL. 1. ! | | E.** | **b/a | **D/- | | |
| * LE GRAND-SALAZAR ** RUDENKO | | | | | | |
| <u>LE GRAND - SUSCHKOV</u> | ** 1. ? | A/B. | - | - | a! | 25. |
| | * 1. ? | A. | a | B. | ! | |
| | * 1. ? | B. | a | A. | ! | |
| SOL. ** 1. ! | | - | b/c | A/B. | | |
| * LE GRAND ** SUSCHKOV | | | | | | |
| <u>RUDENKO - DOMBROVSKI</u> <u>LE GRAND</u> | * 1. ? | A/B. | - | - | a! | 26. |
| | ** 1. ? | ** A. | a*** | B.*** | ! | |
| | ** 1. ? | ** B. | a*** | A.*** | ! | |
| SOL. *** 1. ! | | - | b/c | B/A. | | |
| * RUDENKO ** DOMBROVSKI *** LE GRAND | | | | | | |
| <u>RUDENKO - RUCHKLIS</u> <u>(1ª forma)</u> | J. A. | | a/b | A/B. | | 27. |
| | 1. ? | - | c/d | C/D. | ! | |
| SOL. * 1. ! | | C/D. | c/d | A/B. | | |
| * RUDENKO RUCHKLIS - Conjunto total del juego | | | | | | |
| <u>RUDENKO - RUCHKLIS</u> <u>(2ª forma)</u> | J. A. | | c/d | A/B. | | 28. |
| | * 1. ? | A/B. | a/b | A/B. | ! | |
| | 1. ? | A. | a/c | A/C. | ! | |
| SOL. 1. ! | | B. | b/d | B/D. | | |
| * RUDENKO RUCHKLIS - Conjunto total del juego | | | | | | |

.../...

9

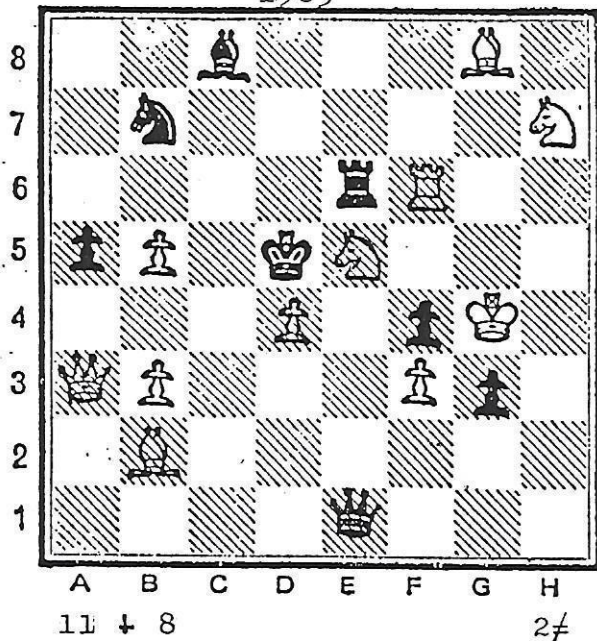
COMBINACIONES DE CICLOS CON REVERSIONES EN DEFENSAS Y MATES QUE DETERMINAN LAS CONSIGUIENTES DENOMINACIONES DE LOS TEMAS DESARROLLADOS.

| Temas combinados | Ensayos | Amenaza | Defensas | Mates | Refu- tac. | Diagr ejemp |
|---|--|---------|----------|----------|---------------|----------------|
| | | | 1--/1-- | 2.-/2.- | | |
| <u>SALAZAR - LE GRAND</u> | x 1.A? | B. | a | C. | ! | 29. |
| | xx 1. ? | D. | b | B. | ! | |
| | SOL. 1. ! | B. | *a/b** | *A/D.* | | |
| | x SALAZAR xx LE GRAND | | | | | |
| <u>SUSCHKOV - RUCHKLIS</u> | J.A. | | *a/b* | **A/B.** | | 30. |
| | 1. ? | A.** | **c/b* | **B/C.* | ! | |
| | SOL. 1. ! | B.** | **d/a* | **A/D.* | | |
| | xx SUSCHKOV x RUCHKLIS | | | | | |
| <u>VLADIMIROV - LE GRAND</u> | xx 1.A? | C. | a | - | ! | 31. |
| | xx 1. ? | B. | b | C. | ! | |
| | SOL. x 1. ! | C. | a/b | A/B. | | |
| | x VLADIMIROV xx LE GRAND | | | | | |
| <u>VLADIMIROV - SALAZAR</u> | 1.*A? | - | **a | **C. | *b! | 32. |
| | 1.*B? | - | *b | D. | *a! | |
| | SOL. 1.C! | - | **a/b* | **A/B.* | | |
| | x VLADIMIROV xx SALAZAR | | | | | |
| <u>ZAGORUJKO - DOMBROVSKI</u> | 1. ? | *A. | a/b | C/D. | ! | 33. |
| | 1. ? | *B. | a/b | E/F. | ! | |
| | SOL. x 1. ! | - | a/b | A/B. | | |
| | ZAGORUJKO - Conjunto total x DOMBROVSKI del juego | | | | | |
| <u>ZAGORUJKO - LE GRAND</u> | 1. ? | - | a/b | C/D. | ! | 34. |
| | 1. ? | *A. | *a/b | *B/E. | ! | |
| | SOL. 1. ! | *B. | *a/b | *A/F. | | |
| | ZAGORUJKO - Conjunto total x LE GRAND del juego | | | | | |
| <u>ZAGORUJKO - SALAZAR VLADIMIROV</u> | 1.*E? | - | *a/b** | *A/B.** | ! | 35. |
| | x 1.B? | - | a/b | C/D. | ! | |
| | SOL. 1.A! | - | *a/b | *E/F. | | |
| | ZAGORUJKO - Conjunto total x SALAZAR del juego xx VLADIMIROV | | | | | |
| <u>ZAGORUJKO - VLADIMIROV</u> | x 1.A? | D. | c/d | B/C. | a! | 36. |
| | x 1.B? | - | c/a | A/E. | b! | |
| | SOL. 1.D! | - | d/a | F/D. | | |
| | ZAGORUJKO - Conjunto total x VLADIMIROV del juego | | | | | |

1.

A. KUZOVKOV

11^a M.H. 147 T.T. "Probleemblad" 1985



Temas BANNY - SALAZAR

1. Cc4-A? (2. Cb6)
1--Bb4-a; 2. Tf5-C. 1--Dc3-b!
1. Cc6-B? (2. Ce7)
1--Dc3-b; 2. Tf5-C. 1--Db4-a!
1. Tf5-C! (2. Cf6)
1--Db4-a; 2. Cc4-A
1--Dc3-b; 2. Cc6-B

ESQUEMA

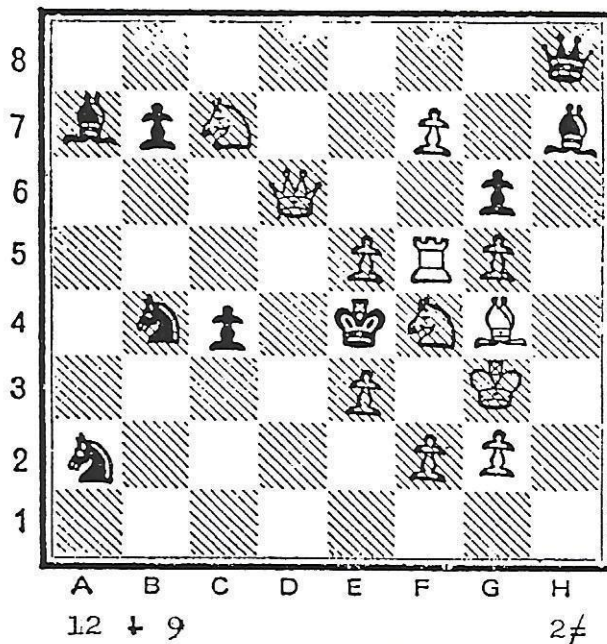
1. A? (2.-). 1-- a; 2. C. b!
1. B? (2.-). 1-- b; 2. C. a!
1. C! (2.-). 1--a/b; 2. A/B.

Prácticamente igual al BANNY básico

2.

I. KISS

2^o Pr. "Diagrammes" 1983



Temas DOMBROVSKI - HANNELIUS

- * 1. De6? (2. Af3-A), 1--Axe3-a
* 1. Dd2? (2. Pf3-B), 1--Pxf5-b
1. Ch5! (2. Tf4)
xx { 1--Axe3-a; 2. Pf3-B
1--Pxf5-b; 2. Af3-A

ESQUEMA

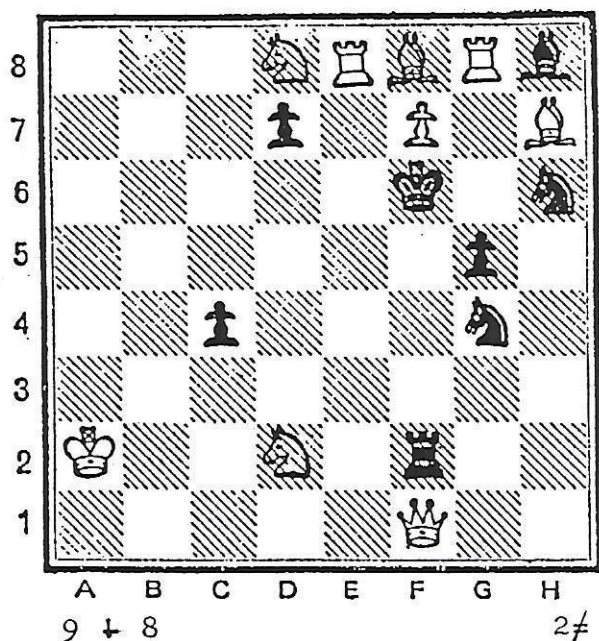
- * 1. ? (2.A). a!
* 1. ? (2.B). b!
xx 1. ! (2.-). 1--a/b; 2. B/A.

* DOMBROVSKI

xx HANNELIUS

3.

W.J.G. MEES
"Probleemblad" 1988



Temas **DOMBROVSKI - LACNY**

J.A.:

xx { 1--Ce5-a; 2.Ae7-A
1--Cf5-b; 2.Tg6-B

x 1.Te4? (2.Ae7-A), 1--Ce5-a!

x 1.Ab1? (2.Tg6-B), 1--Cf5-b!

1.Te2? (2.Ae7-A)

{ 1--Ce5-a; 2.Ce4-C.

{ 1--Cf5-b; 2.Tg6-B. 1--Ce3!

1.Ac2! (2.Tg6-B)

xx { 1--Ce5-a; 2.Ae7-A
1--Cf5-b; 2.Ce4-C

ESQUEMA

xx J.A.: 1--a/b; 2.A/B

x 1. ? (2.A) - - a!

x 1. ? (2.B) - - b!

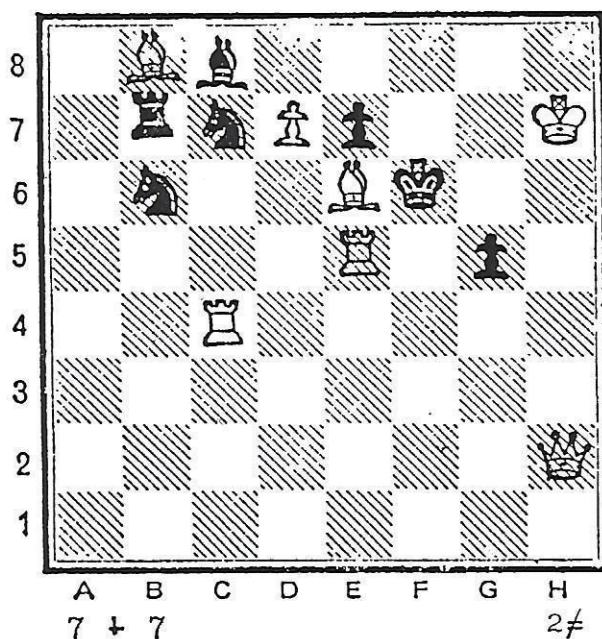
xx 1. ? (2.A). 1--a/b; 2.C/B.

xx 1. ! (2.B). 1--a/b; 2.A/C.

x DOMBROVSKI
xx LACNY

4.

A. SLESARENKO
1º Pr. "Schach-Aktiv" 1989



Temas **DOMBROVSKI - LE GRAND**

1.Tc-e4? (2.Dh6-A/Df2-B/Tf5-C).

1--Cxe6-a

1.Tc-c5? (2.Dh6-A/Df2-B).

x 1--Cxe6-a; 2.Tf5-C.

1--Cb-d5!

1.Pd8C? (2.Tf5-C)

x 1--Cxe6-a; 2.Dh6-A.

1--Axe6!

1.Tc6! (2.Tf5-C)

x 1--Cxe6-a; 2.Df2-B.

ESQUEMA

1. ? (2.A/B/C) - - a!

1. ? (2.A/B). x 1--a; 2.C. !

1. ? (2.C). x 1--a; 2.A. !

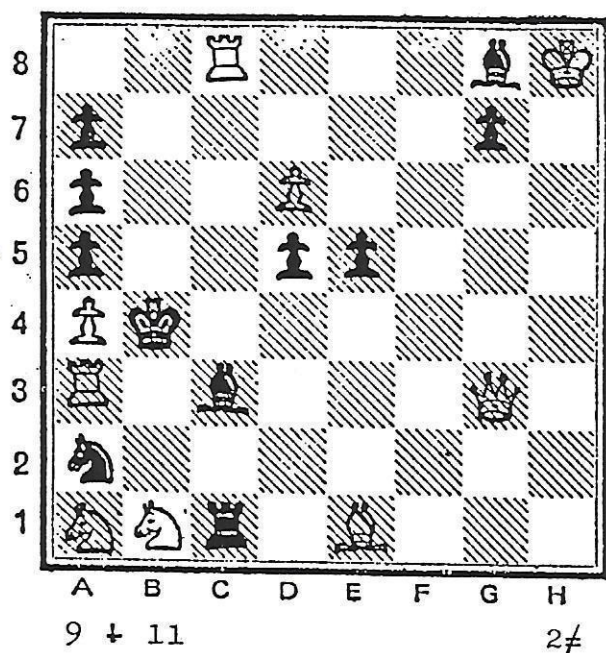
1. ! (2.C). x 1--a; 2.B.

DOMBROVSKI - Conjunto total juegos

x LE GRAND

E. NAVON

2º Pr. e.a. "Jubileo E.Petite"



Temas DOMBROVSKI - PSEUDO LE GRAND

* 1.Db3? (2.Dc5-A)

1--Ad2-b; 2.Db3.

* 1--Pd4-a!

* 1.Dg2? (2.Db2-B)

1--Pd4-a; 2.Db7-C.

* 1--Ad2-b!

1.Dxg7? 2.Db7-C)

1--Pe4; 2.Dd4-D.

1--Af7!

* { 1.Dxe5! (2.Dd4-D)
 1--Pd4-a; 2.Dc5-A
 1--Ad2-b; 2.Db2-B

ESQUEMA

* 1. ? (2.A). 1-- b; 2.- a!

* 1. ? (2.B). 1--^{xx}a; 2.C.^{xx} b!

* 1. ? (2.C). 1-- ; 2.D. !

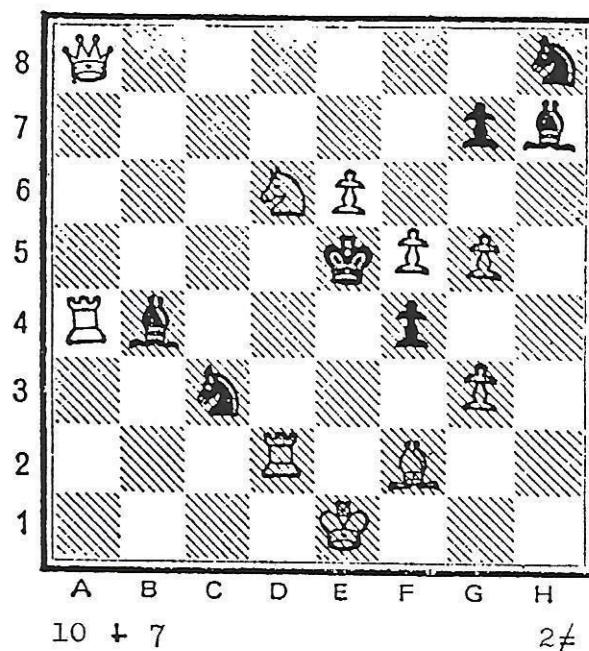
* 1. ! (2.-). 1--a/b; 2.A/B.

* DOMBROVSKI

** PSEUDO-LE GRAND

A. DOMBROVSKI y Y. SHUSHKOV

"Shakmaty" 1977



Temas DOMBROVSKI - RUCHKLIS

1.Dc6? (2.Ad4-A)

* 1--Axf5-b; 2.Cc4-B.

1--Axd6-a!

1.Pg4? (2.Cc4-B)

* 1--Axd6-a; 2.Ad4-A.

1--Axf5-b!

{ 1.Df8! (2.Dxg7)
 1--Axd6-a; 2.Pxf4-C
 1--Axf5-b; 2.Dxf5-D
 1--Cd5-c; 2.Ad4-A
 1--Ce4-d; 2.Cc4-B

ESQUEMA

* 1. ? (2.A). 1-- b; 2. B. a!

* 1. ? (2.B). 1-- a; 2. A. b!

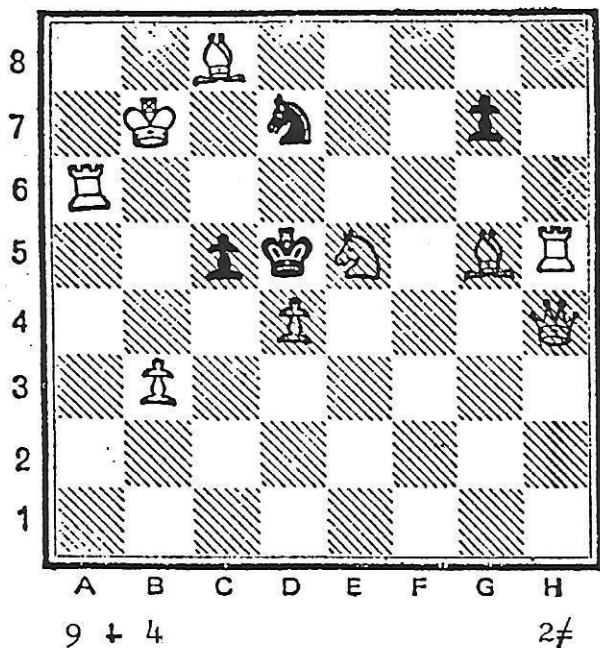
** 1. ! (2.-). 1--a/b/c/d; 2.C/D/A/B.

* DOMBROVSKI

** RUCHKLIS

7.

A. MOCHALKIN y A. POSTNIKOV
1º-2º Pr. "Moscu Ty." 1988



Temas: DOMBROVSKI - SALAZAR

- { 1.Ae3? (2.Dh1-A)
1--Pxd4-a; 2.Dxd4. 1--Cb6-b!
{ 1.Cg6-B? (2.Ce7)
1--Cb6-b; 2.Ae7-C. 1--Pxd4-a!*

- 1.Ae7-C! (2.Td6)
* 1--Pxd4-a; 2.Dh1-A
** 1--Cb6-b; 2.Cg6-B

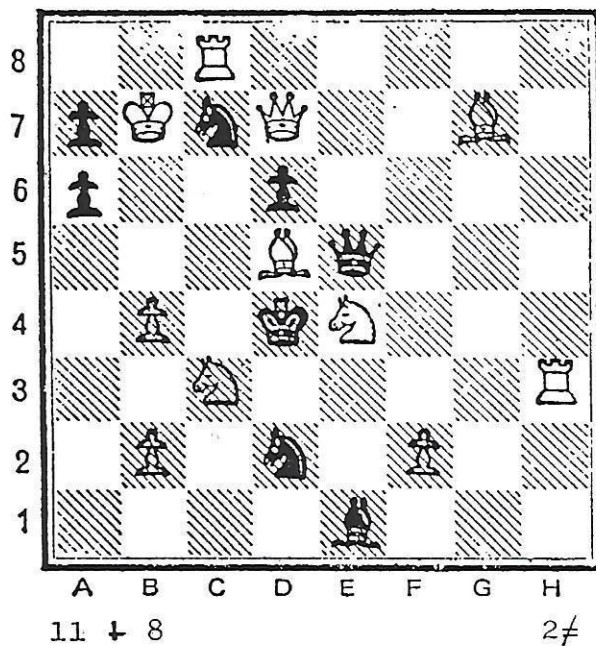
ESQUEMA

- * 1. ?(2.A). 1-- a; 2. - b!
** 1.B? (2.-). 1-- b; 2. C. a! *
1.C! (2.-). 1--a/b; 2.A/B.**

* DOMBROVSKI
** SALAZAR

8.

A. MOCHALKIN y S. SHEDEJ
"The Problemist" 1989



Temas: DOMBROVSKI - SALAZAR - ZAGORUJKO

- 1.Dg4-C? (2.Cxd2)
* 1--Cxd5-a; 2.Ce2-A
** 1--Cf3-b; 2.Cc5-B. 1--Ce6!
1.Dc6? (2.Ce2-A)
1--Cxd5-a; 2.Dxd5-D.
1--Cf3-b; 2.De4-E. 1--Dxg7!
1.Cc5-B! (2.Td3)
1--Cxd5-a; 2.Ce6-F.
** 1--Cf3-b; 2.Dg4-C.

ESQUEMA

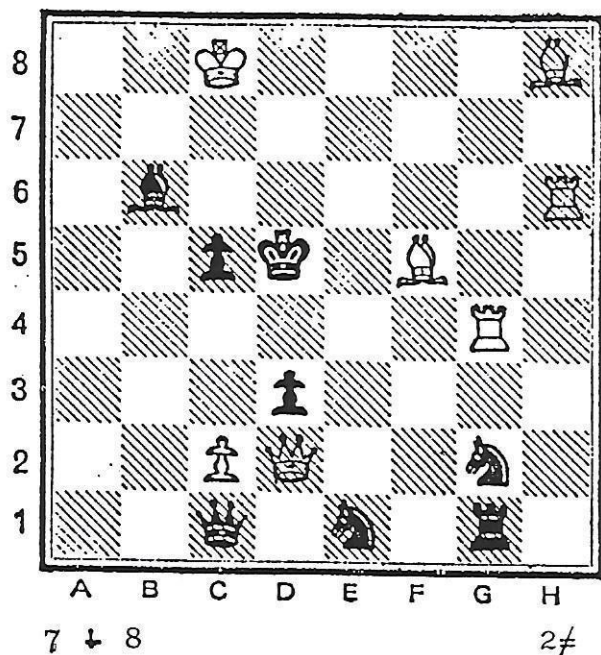
- 1.C? (2.-). 1--a/b; 2.A/B.** !
1. ? (2.A). 1--a/b; 2.D/E. !
1.B! (2.-). 1--a/b; 2.F/C.**

* DOMBROVSKI
** SALAZAR

ZAGORUJKO - Conjunto total juego

9.

A. BOITMANIS

3^a M.H. "Vecherny Baku" 1977

Temas DOMBROVSKI - VLADIMIROV

* 1.Ta4? 2.Ae4-A), 1--Pc4-a!

** 1.Axd3-B? (2.Ac4), 1--Cf4-b!

*** { 1.Dg5! (2.Dg8)
 1--Pc4-a; 2.Ae4-A
 1--Cf4-b; 2.Axd3-B

ESQUEMA

* 1. ? (2.A). - - a!

** 1.B? (2.-). - - b!

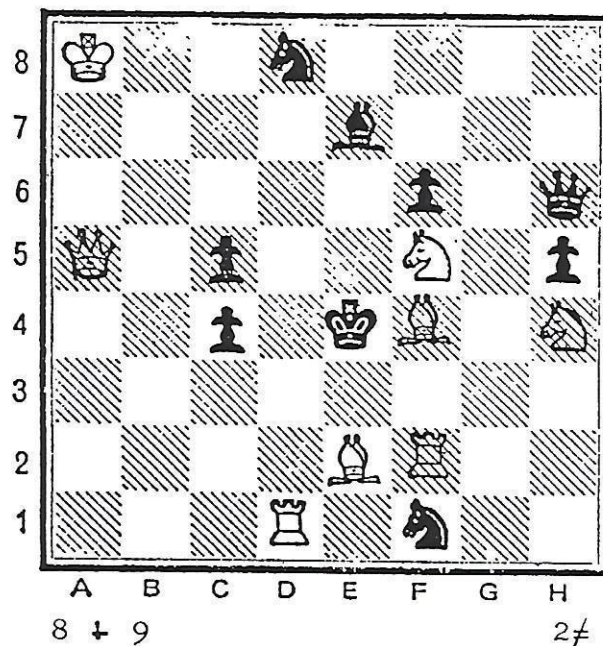
*** 1. ! (2.-). 1--a/b; 2.A/B

* DOMBROVSKI }
 ** VLADIMIROV } ***

10.

A. MOCHALKIN

"Shakmaty v URSS" 1989



Temas DOMBROVSKI - VLADIMIROV - HANNELIUS

* { 1.Dc7? (2.Af3-A)
 1--Dxf4-b; 2.Dxf4. 1--Cd2-a!

** { 1.Axc4-B? (2.Ad5)
 1--Cd2-a; 2.Tel. 1--Dxf4-b

*** { 1.De1! (2.Axf1)
 1--Dxf4-b; 2.Af3-A
 1--Cd2-a; 2.Axe4-B

ESQUEMA

* 1. ? (2.A). 1-- b; 2. - a!

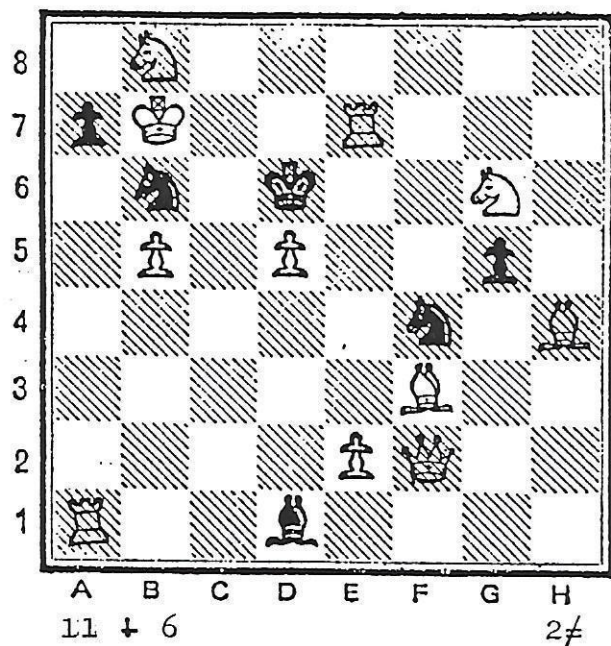
** 1.B? (2.-). 1-- a; 2. - b!

*** 1. ! (2.-). 1--b/a; 2.A/B.

* DOMBROVSKI
 ** VLADIMIROV
 *** HANNELIUS

11.

A. BOITMANIS
2º Pr. "Jurmala" 1978



Temas HANNELIUS - BANNY

1.Ta6-C? (2.Td7-A). 1--Cfxd5-a!

1.Ag3-D? (2.Te6-B). 1--Cbxd5-b!

1.De3? (2.Da3)

1--Cfxd5-a; 2.Te6-B.

1--Cbxd5-b; 2.Td7-A. 1--Ab3!

1.Dd4! (2.Db4)

xx { 1--Cfxd5-a; 2.Ag3-D.
1--Cbxd5-b; 2.Ta6-C.

Combinado con defensas. Nietveld

ESQUEMA

1.C? (2.A). - - a!

1.D? (2.B). - - b!

* 1. ? (2.-). 1--a/b; 2.B/A !

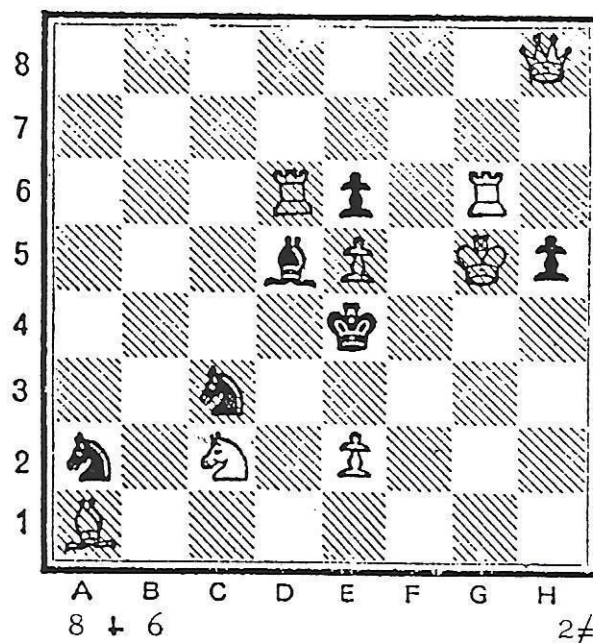
* 1. ! (2.-). 1--a/b; 2.D/C.

* HANNELIUS

xx BANNY

12.

M. CHRAMCEVIC
2º Rec. "Hlas-Ludu" 1986



Temas HANNELIUS - BANNY - SALAZAR

xx 1.Tgxe6-A? (2.Dh7-B), 1--Cxe2-a!

xx { 1.Dh7-B? (2.Tgxe6-A)
1--Cxe2-a; 2.Tf6-C. 1--Rxe5-b!

xx 1.Tf6-C! (2.Tf4)

x { 1--Cxe2-a; 2.Dh7-B.
1--Rxe5-b; 2.Tfxe6-A.

ESQUEMA

xx 1.A? (2.B). - - a!

xx 1.B? (2.A). 1-- a; 2. C. b!

xx 1.C! (2.-). 1--a/b; 2.B/A.

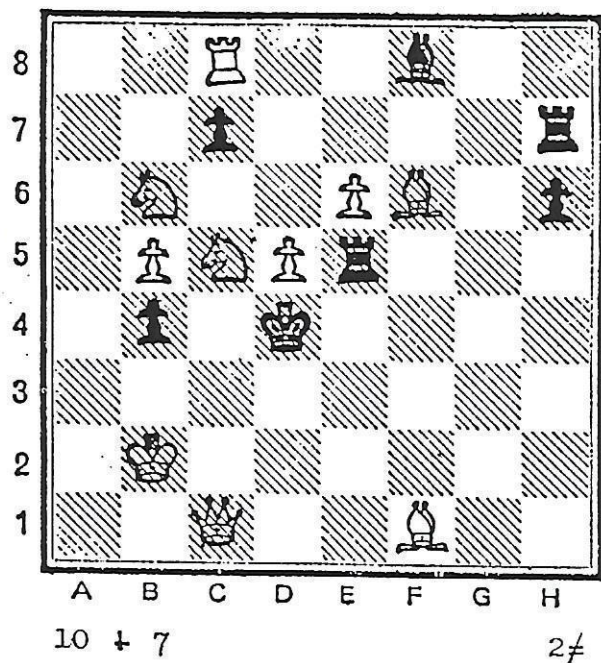
* HANNELIUS

xx BANNY - SALAZAR

13.

A. LOBUSOV

2º Pr. "Hlas-Ludu" 1988



Temas HANNELIUS - DOMBROVSKI

J.A.:

- * * { 1--Axc5-a; 2.Df4-A
 { 1--Pxb6-b; 2.Dd2-B
 * 1.Cd3? (2.Df4-A), 1--Pxb6-b!
 * 1.Cb-a4? (2.Dd2-B), 1--Axc5-a!
 * { 1.Ag2! (2.Dg1)
 { 1--Axc5-a; 2.Dd2-B
 { 1--Pxb6-b; 2.Df4-A

ESQUEMA

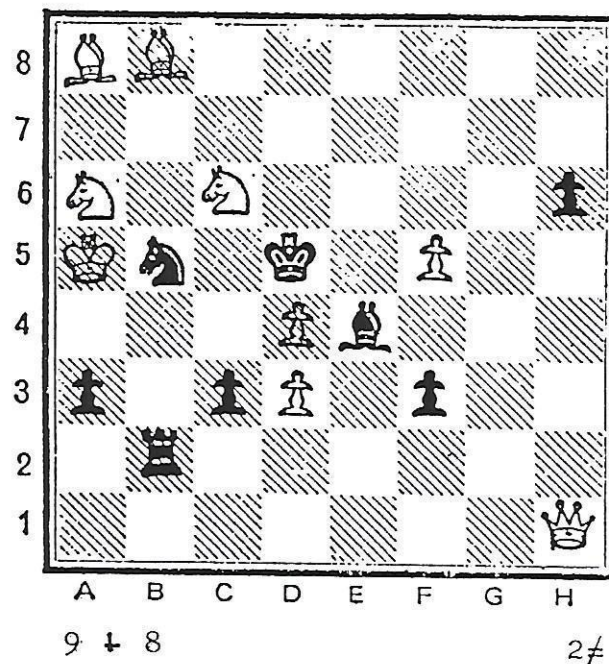
- * * J.A.: 1--a/b; 2.A/B.
 * 1. ? (2.A). - - b!
 * 1. ? (2.B). - - a!
 * 1. ! (2.-). 1--a/b; 2.B/A.

* HANNELIUS
 * * DOMBROVSKI

14.

A. LOBUSOV

2º Pr. e.a. "Jubileo E. Petite"



Temas HANNELIUS - PSEUDO-LE GRAND

- * 1.Dh2? (2.De5-A), 1--Axd3-a!
 * 1.Dxh6? (2.De6-B), 1--Axf5-b!
 * { 1.De1? (2.Dxe4)
 { 1--Axd3-a; 2.De6-B.
 { 1--Axf5-b; 2.De5-A. 1--Cc7!
 * * { 1.Dh4! (2.Dxe4)
 { 1--Axd3-a; 2.Ce5-C.
 { 1--Axf5-b; 2.Cd8-D.

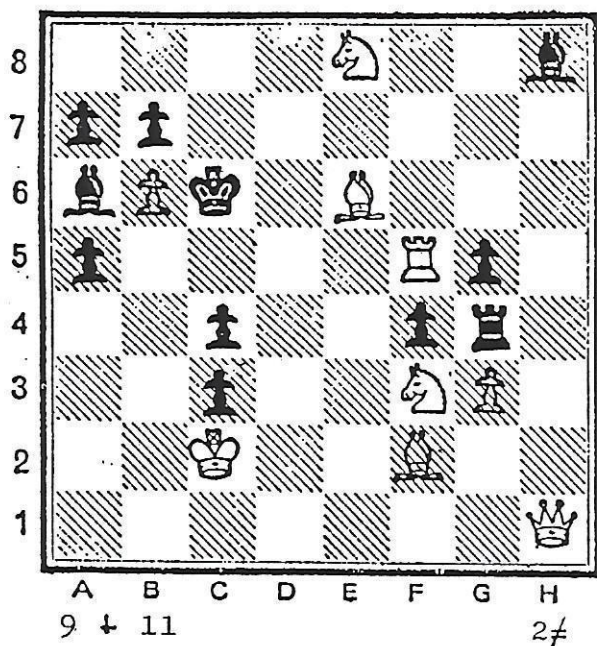
ESQUEMA

- * 1. ? (2.A). - - a!
 * 1. ? (2.B). - - b!
 * 1. ? (2.-). 1--a/b; 2.B/A. !
 * * 1. ! (2.-). 1--a/b; 2.C/D.

* HANNELIUS
 * * PSEUDO-LE GRAND

15.

U. DEGENER
"The Problemist" 1989



Temas HANNELIUS - RUCHKLIS

J.A.:

1--Pxb6-c; 2.Cd4-B

1--Ab5-d; 2.Ce5-A

× 1.Txa5? (2.Ce5-A). 1--Ad4-a!

× 1.Ac5? (2.Cd4-B). 1--Ae5-b!

1.Db1! (2.Tc5)

× 1--Ad4-a; 2.Cxd4-B.

× 1--Ae5-b; 2.Cxe5-A.

×× 1--Pxb6-c; 2.Dxb6-C.

×× 1--Ab5-d; 2.Dxb5-D.

ESQUEMA

J.A.: c/d B/A

× 1. ? (2.A). a!

× 1. ? (2.B). b!

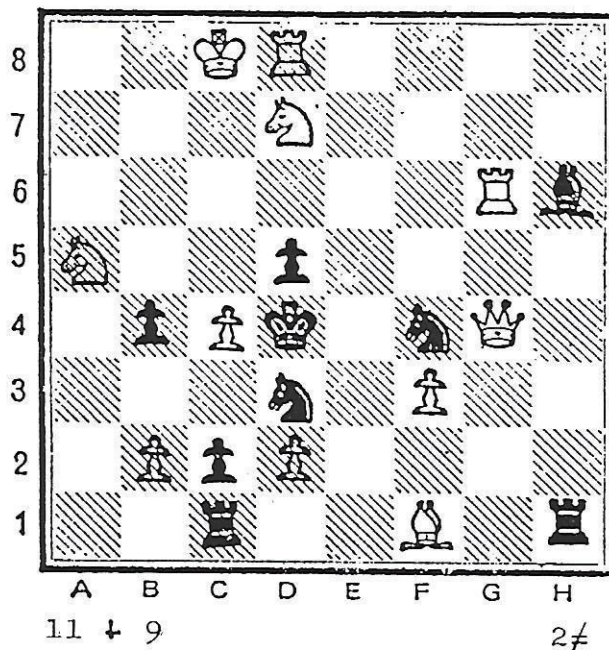
1. ! (2.-). 1--a/b/c/d; 2.B/A/C/D

× HANNELIUS

×× RUCHKLIS

16.

A. PANKRATIEV
3^o Pr. "Caissa Zvolen" 1988



Temas HANNELIUS - RUCHKLIS

J.A.:

× { 1--Cc5-b; 2.Cc6-A
1--Ce5-a; 2.Cb3-B

× 1.Pb3? (2.Cc6-A). 1--Ce5-a!

× 1.Tc6? (2.Cb3-B). 1--Cc5-b!

×× { 1.Ce5! (2.Txd5)
1--Rc5-c; 2.Cb3-B.
1--Rxe5-d; 2.Cc6-A.

ESQUEMA

× J.A.: 1--b/a; 2.A/B.

× 1. ? (2.A). - - a!

× 1. ? (2.B). - - b!

×× 1. ! (2.-). 1--c/d; 2.B/A.

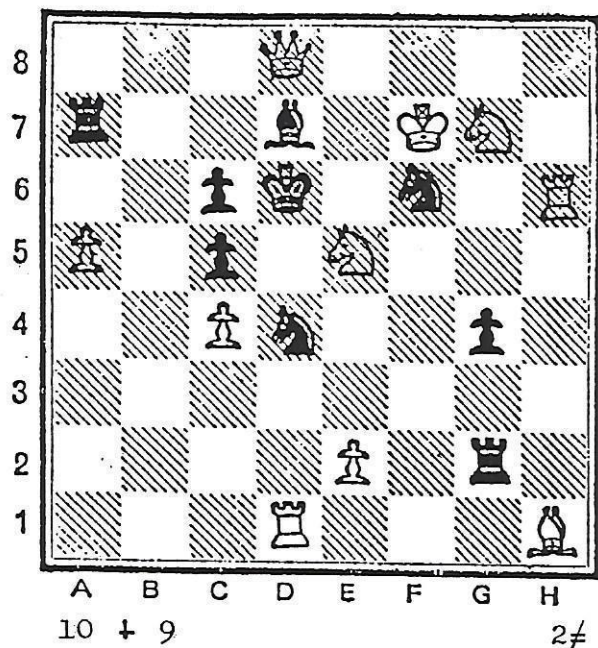
× HANNELIUS

×× RUCHKLIS

17.

V. PILTSCHENKO

Pr. Esp. "Hlas-Ludu" 1988



Temas HANNELIUS - SUSCHKOV

1. Cd3? (2. Ce8-A)

1--Ce6; 2. Cf5-B. * 1--Txe2-a!

1. Cg6? (2. Cf5-B)

1--Cd5; 2. Ce8-A. * 1--Tf2-b!

{ 1. Cxc6! (2. Txf6)
 * { 1--Txe2-a; 2. Cf5-B.
 { 1--Tf2-b ; 2. Ce8-A.

ESQUEMA

* 1. ? (2.A). 1-- - ; 2. B. * a!
 * 1. ? (2.B). 1-- - ; 2. A. * b!
 , 1. ! (2.-). 1--a/b ; 2.B/A.

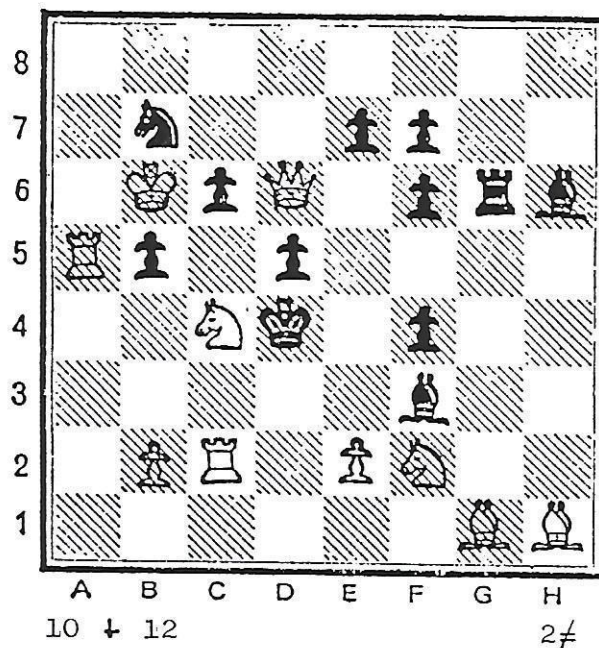
* HANNELIUS

** SUSCHKOV

18.

D. BANNY

10. Pl. "Memorial Loschinsky" 1982



Temas LE GRAND - DOMBROVSKI

1. Dxc6? (2. Td2-A)

{ 1. Dxc6? (2. Td2-A)
 * { 1--Pdxc4-c; 2. Cg4-B. ** 1--Pbxc4-a!
 { 1. Dxe7? (2. Cg4-A)
 { 1--Pdxc4-c; 2. Td2-A. ** 1--Axe2-b!

** { 1. Ta3! (2. Td3)
 { 1--Pbxc4-a; 2. Td2-A.
 { 1--Axe2-b ; 2. Cg4-B.

ESQUEMA

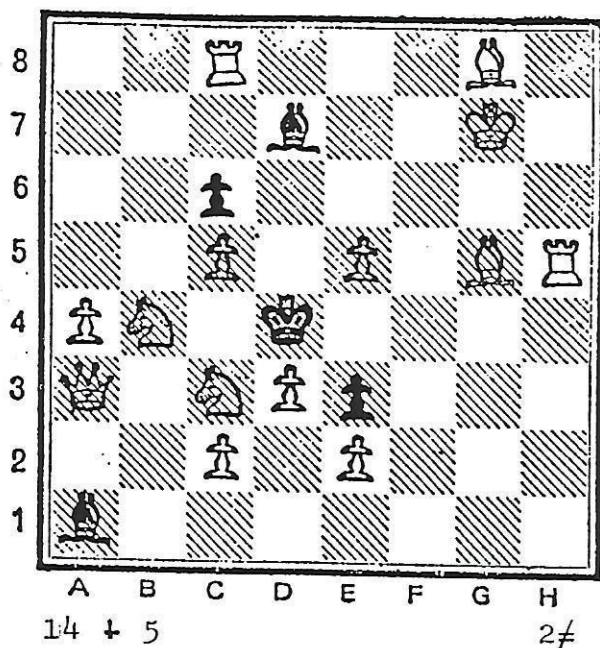
* 1. ? (2.A). 1-- c ; 2. B. ** a!
 * 1. ? (2.B). 1-- c ; 2.A. ** b!
 ** 1. ! (2.-). 1--a/b ; 2.A/B.

* LE GRAND

** DOMBROVSKI - incluidas refu-
 taciones a los
 ensayos

S. SHEDEJ

"Wsesojusn Komand Sor." 1966



Temas LE GRAND - HANNELIUS

1. Pe6? (2. Af6-A)

1--Re5-b; 2. Axe3-C. 1--Rxc5-a!

1. Td8? (2. Cxc6-B)

1--Rxc5-a; 2. Axe3-C. 1--Rxe5-b!

XX { 1. Cc-d5! (2. Axe3-C)
 1--Rxe5-b; 2. Af6-A.
 1--Rxc5-a; 2. Cxc6-B.

ESQUEMA

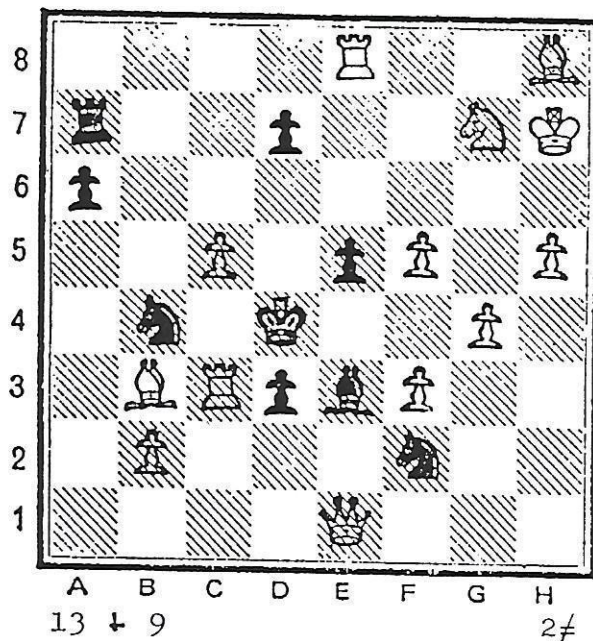
1. ? (2.A). 1-- b ; 2. C. a!
 1. ? (2.B). 1-- a ; 2. C. b!
 1. ! (2.C). 1--b/a; 2.A/B.

XX HANNELIUS

LE GRAND - Conjunto total juego.

A. KUZOVKOV

4º Pr. "Jubileo E. Petite"

Temas LE GRAND - RUCHKLIS
ZAGORUJKOJ.A.:

X { 1--Cd5-a; 2. Tc4-A.
 1--Pe4-b; 2. Ce6-B.

X { 1. Af7? (2. Tc4-A)
 1--Pd5-c; 2. Ce6-B. 1--Cd5-a!
 1. Td8? (2. Ce6-B)
 1--Pd5-c; 2. Tc4-A. 1--Pd6!

1. Txe5! (2. Dxe3)

XX 1--Rxe5-d; 2. Ce6-B.

XX 1--A-juega-e; 2. Tc4-A.
 1--Cd5-a; 2. Txd5-C.

ESQUEMA

X J.A.: 1--a/b; 2.A/B.

X 1. ? (2.A). 1--c; 2.B. a!

X 1. ? (2.B). 1--c; 2.A. !

1. ! (2.-). 1--d/e/a; 2. B/A/C.
 XX XX

X LE GRAND

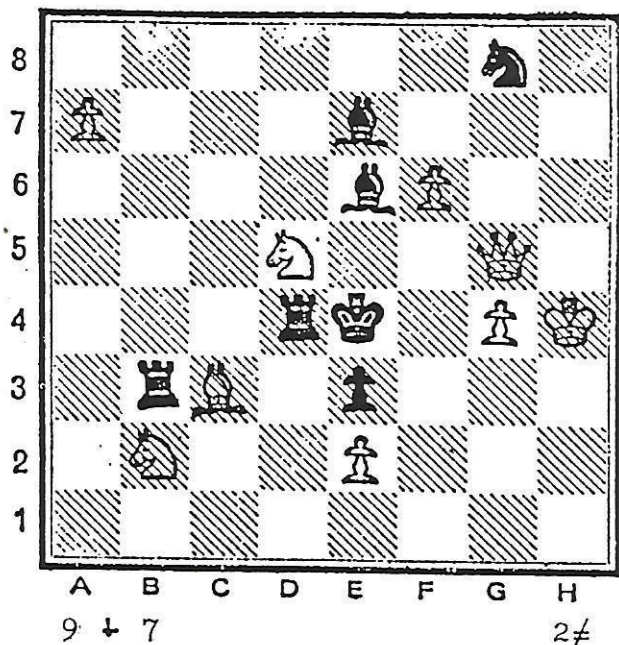
XX RUCHKLIS

ZAGORUJKO - Conjunto total del juego

21.

V. SHANSHIN

1º Pr. "Probleemblad" 1990



Temas LE GRAND - RUDENKO
ZAGORUJKO

1. Pa8D? (2. Df4-A/Dxe3-B)
1--Txd5-a; 2. De5-C.
1--Axf6-b; 2. Cxf6. 1--Tb7!

1. Cd3? (2. De5-C)

× 1--Txd5-a; 2. Df4-A.

1--Axf6-b; 2. Cc5. 1--Ad6!

1. Cc4! (2. De5-C)

× 1--Txd5-a; 2. Dxe3-B.

1--Axf6-b; 2. Cd6.

ESQUEMA

×× 1. ? (2. A/B). 1--a/b; 2. C/- !
1. ? (2. C). 1--a/b; 2. A/- !
1. ! (2. C). 1--a/b; 2. B/-

× LE GRAND

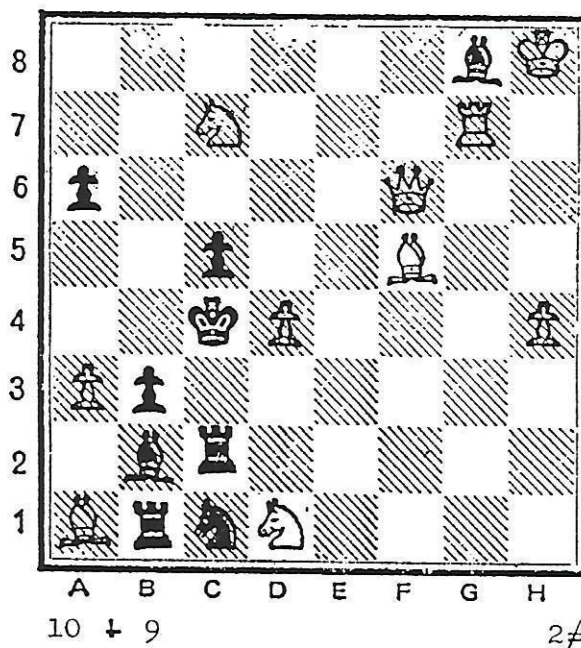
×× RUDENKO

ZAGORUJKO - Conjunto total
del juego

22.

B. LENDER

3º M.H. "CSTV" 1979



Temas LE GRAND - SALAZAR

× 1. Pd5-A? (2. Ce3-B)

1--Axa3-a; 2. Tg4-C*

1--Ad4-b; 2. Dxa6-D.

1--Te2!

× 1. Tg4-C! (2. Dxa6-D)

1--Axa3-a; 2. Pd5-A*

1--Axd4-b; 2. Ce3-B.

ESQUEMA

1. A? (2. B). 1--a/b; 2. C/D. !

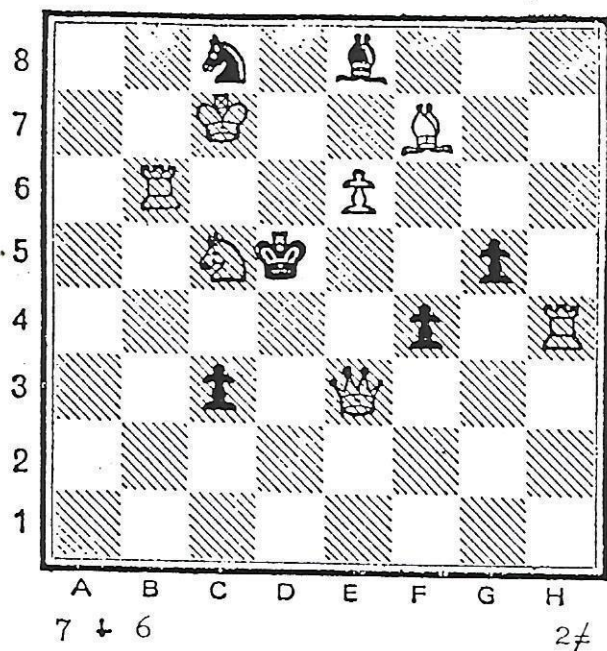
1. C! (2. D). 1--a/b; 2. A/B.

× SALAZAR

LE GRAND - Conjunto total del
juego.

V. POPOV

"Magadansky Komsomolets" 1985



Temas LE GRAND - SALAZAR
(otra variante)

* 1.Tb5-A? (2.De4-B)

1--Pxe3-a; 2.Cd7-C.*

1--Rc4-b ; 2.Dd3-D. 1--Cd6!

* 1.Cd7-C! (2.Dd3-D)

1--Pxe3-a; 2.Tb5-A.*

1--Rc4-b ; 2.De4-B.

ESQUEMA

1.*A? (2.*B). 1--a/b; 2.*C/D. !

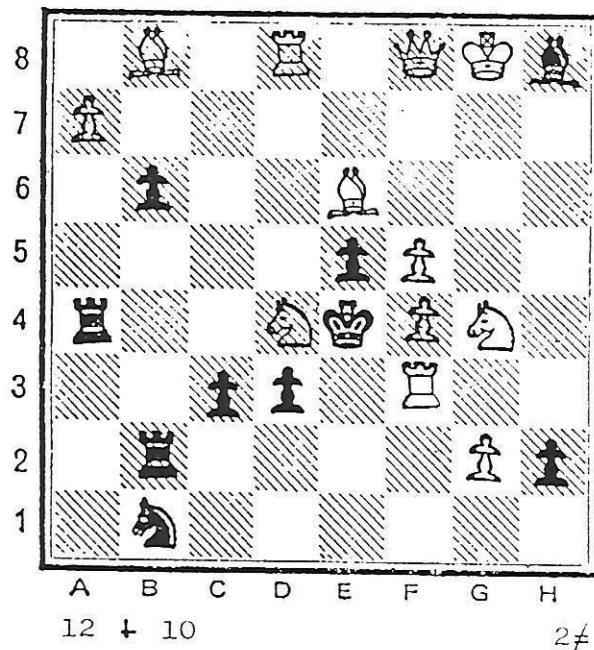
1.*C! (2.D). 1--a/b; 2.*A/B.

* SALAZAR

LE GRAND - Conjunto total
del juego.

V. KOPAIEV

"Probleemblad" 1986



Temas LE GRAND - SALAZAR
(3 fases)

* { 1.Cb3-A? (2.Ad5-C)
1--Ta5-a; 2.Db4-B. 1--Td4!

** { 1.Pg3? (2.Te3-D)
1--Pxd4-b; 2.Ad5-C. 1--Te2!

* 1.Db4-B! (2.Ad5-C)

* 1--Ta5-a; 2.Cb3-A.

** 1--Pxd4-b; 2.Te3-D.

ESQUEMA

* 1.A? (2.C). 1-- a; 2. B. !

** 1. ? (2.D). 1-- b; 2. C. !

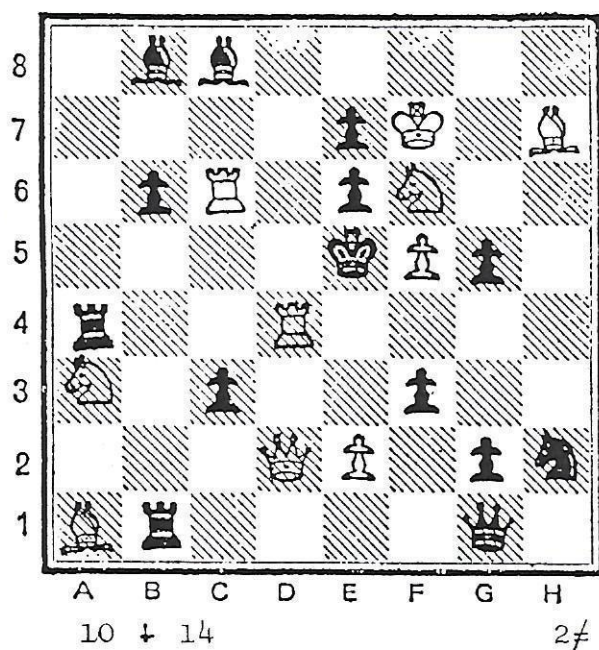
1.*B! (2.C). 1--*a/b; 2.*A/D. **

* SALAZAR

** LE GRAND

24.

A. SLESARENKO y V. SHANSHIN
"Probleemblad" 1988



Temas LE GRAND - SALAZAR
RUDENKO

- * 1.Dxg5-A? (2.Df4)
 * 1--D 6 Txd4-a; 2.Pxe6-B.
 1--Rxd4; 2.Axc3-C. 1--Dcl!
 1.Axc3-C? (2.Td5-D/Te4-E)
 1--Dxd4-a; 2.De3
 1--Txd4-a; 2.Cc4. 1--Pxf6!
 1.Pxe6-B? (2.Td5-D)
 * 1--Pxd2-b; 2.Te4-E.
 * 1--D 6 Txd4-a; 2.Dxg5-A. 1--Tb5!
 1.Tc-c4! (2.Te4-E)
 ** 1--Pxd2-b; 2.Td5-D.
 1--Dxd4-a; 2.Dxd4.

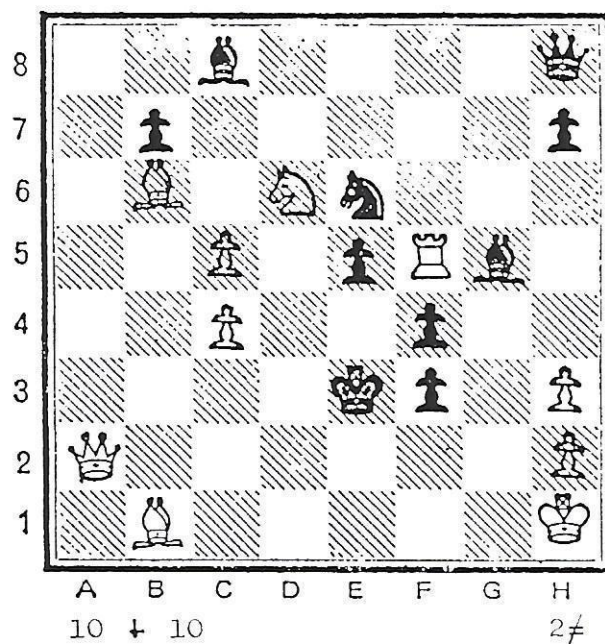
ESQUEMA

- * 1.A? (2.-). 1--a/-; 2.B/C. !
 * 1.C? (2.D/E). 1--a/a; 2.-- !
 1.B? (2.D). 1--b/a; 2.E/A. !
 1. ! (2.E). 1--b/a; 2.D/-.

* LE GRAND - SALAZAR
 ** RUDENKO

25.

M. MARANDJUK y V. RUDENKO
"Probleemblad" 1988



Temas LE GRAND - SUSCHKOV

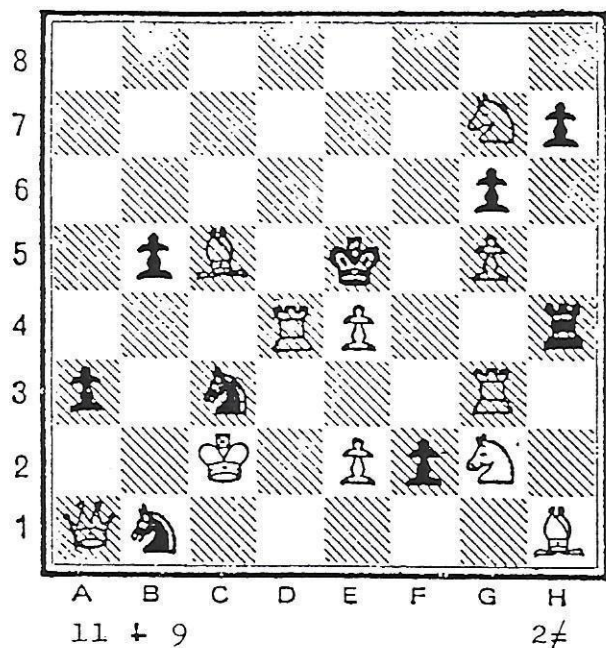
- ** 1.Ce4? (2.Dd2-A/Df2-B), 1--Rd4-a!
 { 1.Aa5? (2.Dd2-A)
 1--Rd4-a; 2.Df2-B. 1--Pf2!
 * { 1.Rg1? (2.Df2-B)
 1--Rd4-a; 2.Dd2-A. 1--Ah4!
 1.Txf4! (2.Te4)
 { 1--Rxf4-b; 2.Dd2-A.
 ** { 1--Pf2-c; 2.Dxf2-B.

ESQUEMA

- ** 1. ? (2.A/B). a!
 * 1. ? (2.A). 1-- a; 2. B. !
 * 1. ? (2.B). 1-- a; 2. A. !
 ** 1. ! (2.-). 1--b/c; 2.A/B.

* LE GRAND
 ** SUSCHKOV

A. KUZOVKOV
2º Pr. "Probleemblad" 1984



Temas **RUDENKO - DOMBROVSKI**
LE GRAND

* 1.Rd3? (2.Td5-A/Ad6-B). 1--Cxe4-a!

** 1.Te3? (2.Td5-A)

*** 1--Cxe4-a; 2.Ad6-B. 1--Cd5!

** 1.Tg-d3? (2.Ad6-B)

*** 1--Cxe4-a; 2.Td5-A. 1--Txe4!

*** { 1.Cf4! (2.Cd3)
1--Rxf4-b; 2.Ad6-B.
1--Txf4-c; 2.Td5-A.

ESQUEMA

* 1. ? (2.A/B). a!

** 1. ? (2.A). 1--^{***}a; 2. B.^{***} !

** 1. ? (2.B). 1--^{***}a; 2. A.^{***} !

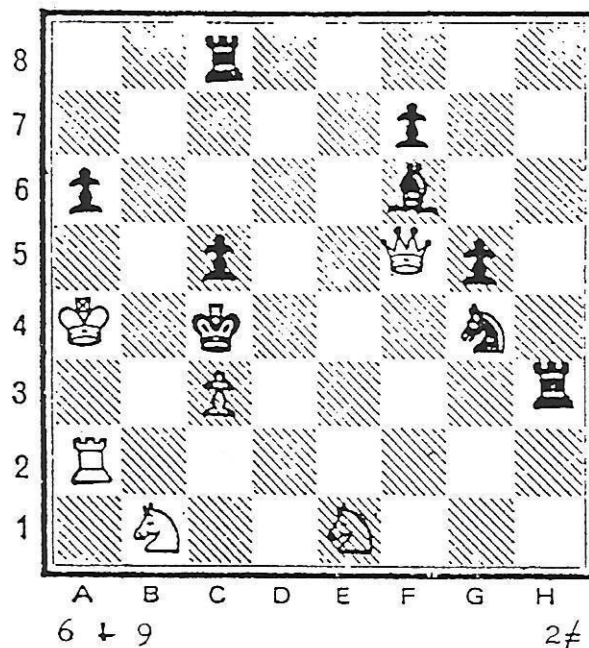
*** 1. ! (2.-). 1--b/c; 2.B/A.

* **RUDENKO**

** **DOMBROVSKI**

*** **LE GRAND**

V. UDARTSEV
1º Pr. "Ribak Primorie" 1982



Temas **RUDENKO - RUCHKLIS**
(1ª forma)

J.A.:

1--Ce3-a; 2.Dd3-A.

1--Ce5-b; 2.De4-B.

1.Cc2? (2.Cc-a3)

1--Txc3-c; 2.Cd2-C.

1--Axc3-d; 2.Cb-a3-D. 1--Ae5!

* { 1.Td2! (2.Cd2-C/Cb-a3-D)
1--Txc3-c; 2.Dd3-A.
1--Axc3-d; 2.De4-B.

Combinado en la solución
con paradas Nietveld.

ESQUEMA

J.A.: 1--a/b; 2.A/B.

1. ? (2.-). 1--c/d; 2.C/D. !

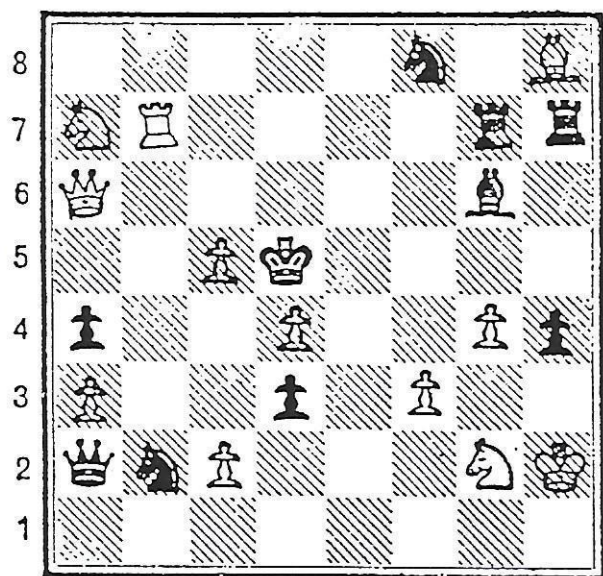
* 1. ! (2.C/D). 1--c/d; 2.A/B.

* **RUDENKO**

RUCHKLIS - Conjunto total
del juego.

A. PANKRATIEV

1º Pr. "Caissa Zvolen" 1988



A B C D E F G H
12 + 10 2≠

Temas **RUDEKO - RUCHKLIS**
(2ª forma)

J.A.:

1--Te7-c; 2.Cf4-A.

1--Tf7-d; 2.Ce3-B.

(1.Pc3? (2.Cf4-A/Ce3-B)
 * { 1--Cc4-a; 2.Cf4-A.
 1--Ce6-b; 2.Ce3-B. 1--Cd1!

1.Cb5? (2.Ce3-B)

1--Cc4-a; 2.Cf4-A.

1--Te7-c; 2.Cc3-C. 1--Cd1!

1.Cc6! (2.Cf4-A)

1--Ce6-b; 2.Ce3-B.

1--Tf7-d; 2.Cb4-D.

ESQUEMA

J.A.: 1--c/d; 2.A/B.

1. ? (2.A/B). 1--a/b; 2.A/B.

1. ? (2.A). 1--a/c; 2.A/C.

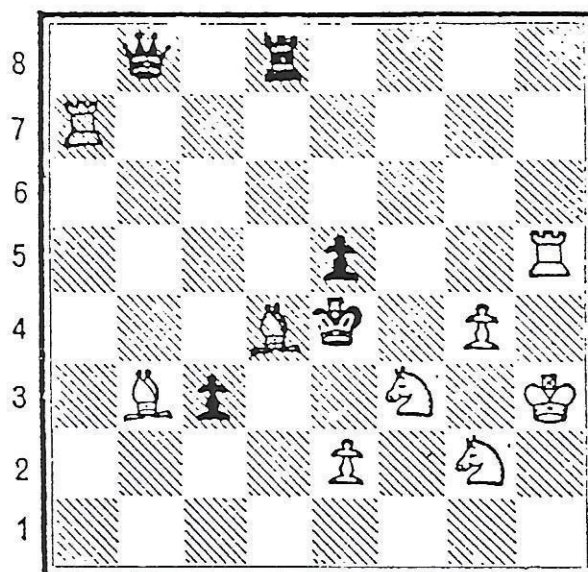
1. ! (2.B). 1--b/d; 2.B/D.

* RUDEKO

RUCHKLIS - Conjunto, total
del juego

A. DOMBROVSKI

"Probleemblad" 1983



A B C D E F G H
9 + 5 2≠

Temas **SALAZAR - LE GRAND**

(1.Ab6-A? (2.Cg5-B)
 * { 1--Tg8-a; 2.Ta4-C. 1--Td3!
 (1.Ta5? (2.Ac2-D)
 ** { 1--Pxd4-b; 2.Cg5-B. 1--Db5!

* 1.Ta4-C! (2.Cg5-B)

* 1--Tg8-a; 2.Ab6-A.

** 1--Pxd4-b; 2.Ac2-D.

ESQUEMA

* 1.A? (2.B). 1-- a; 2. C. !

** 1. ? (2.D). 1-- b; 2. B. !

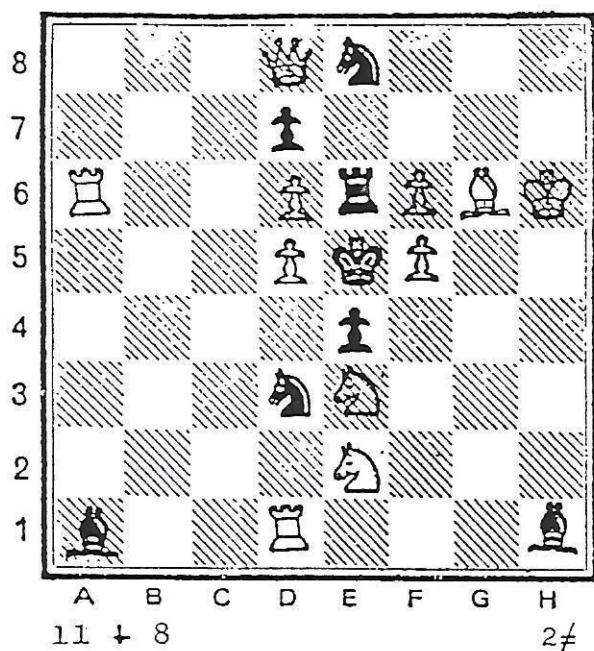
1. ! (2.B). 1--^{*}a/^{**}b; 2.^{*}A/^{**}D.

* SALAZAR

** LE GRAND

30.

A. PANKRATIEV

5^a M.H. "The Problemist" 1989/II

Temas: SUCHKOV - RUCHKLIS

J.A.:

1--Cb2-a; 2.Cg4-A.**

1--Cf2-b; 2.Cc4-B.**

1.Da5? (2.Cg4-A)**

** 1--Cxf6-c; 2.Cc4-B.

x 1--Cf2-b ; 2.Dxa1-C. 1--Af3!

1.Ta5! (2.Cc4-B)**

** 1--Cxd6-d; 2.Cg4-A.

x 1--Cb2-a ; 2.Pxe6-D.

ESQUEMA

J.A.: 1--a/b; 2.A/B.

1. ? (2.A). 1--c/b; 2.B/C.*

1. ! (2.B). 1--d/a; 2.A/D.*

** SUSCHKOV

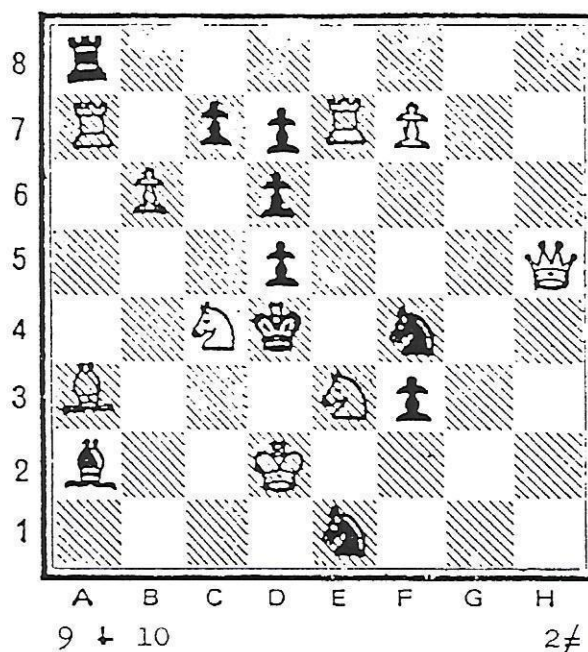
x RUCHKLIS

31.

25

A. POSTNIKOV

"Vechny Kharjov" 1990



Temas: VLADIMIROV - LE GRAND

{ 1.Ca5-A? (2.Cf5-C)
1--Ab1-a; 2.Cb3. 1--Ce6!
1.Ta5? 2.Ab2-B)
1--Pxc4-b; 2.Cf5-C. 1--Ce-d3!

{ 1.Ta4! (2.Cf5-C)
1--Ab1-a ; 2.Ca5-A.
1--Pxc4-b; 2.Ab2-B.

ESQUEMA

** 1.A? (2.C). 1-- a; 2. - !

** 1. ? (2.B). 1-- b; 2. C. !

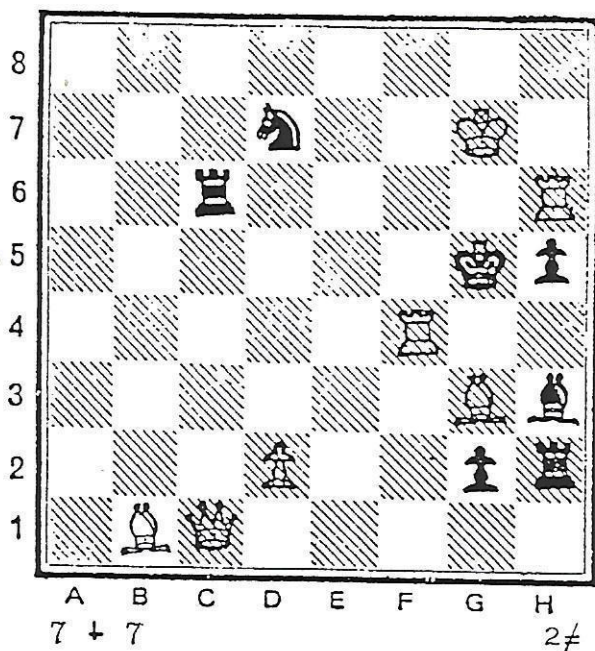
x 1. ! (2.C). 1--a/b; 2.A/B.

x VLADIMIROV

** LE GRAND

I. KISIS

1º Pr. "Ces. sach" 1969



Temas VLADIMIROV - SALAZAR

- ** 1. Pd3-A? (2. Ah4)
 1--Af5-a; 2. Tc4-C. ** 1--Ag4-b!
 * 1. Pd4-B? (2. Ah4)
 1--Ag4-b; 2. Tf5-D. 1--Af5-a!

1. Tc4-C! (2. Ah4)

- ** 1--Af5-a; 2. Pd3-A.
 * 1--Ag4-b; 2. Pd4-B.

ESQUEMA

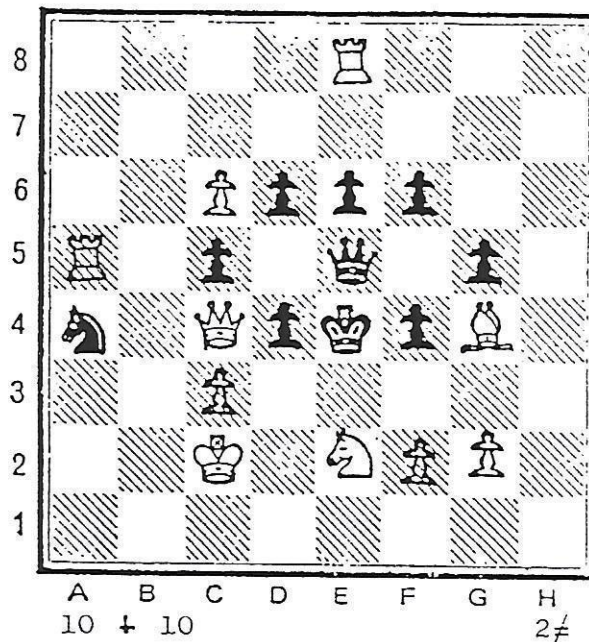
- ** 1. A? (2.-). 1--**a; 2. C. ** *b!
 1. B? (2.-). 1-- b; 2. D. *a!
 1. C! (2.-). 1--**a/b; 2. A/B.

* VLADIMIROV

** SALAZAR

V. EROCHIN

2º Pr. "Hlas-Ludu" 1986



Temas ZAGORUJKO - DOMBROVSKI

1. Axe6? (2. Dd3-A)
 1--Dd5-a; 2. Dxd5-C.
 1--Df5-b; 2. Ad5-D. 1--Cb2!
 1. Cxd4? (2. Cf3-B)
 1--Dd5-a; 2. De2-E.
 1--Df5-b; 2. Af3-F. 1--Pf3!

- { 1. Pxd4! (bloqueo)
 * { 1--Dd5-a; 2. Dd3-A.
 { 1--Df5-b; 2. Cf3-B.

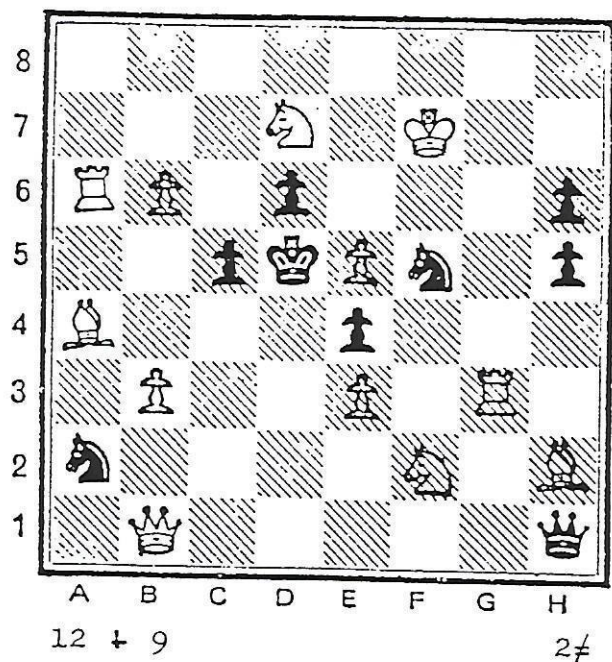
ESQUEMA

1. ? (2. A). 1--a/b; 2. C/D. !
 1. ? (2. B). 1--a/b; 2. E/F. !
 * 1. ! (2.-). 1--a/b; 2. A/B.

ZAGORUJKO - Conjunto total del juego

* DOMBROVSKI

V. EROCHIN
"Probleemblad" 1988



Temas ZAGORUJKO - LE GRAND

- 1.Dc2? (2.Dc4)
 1--Pxe5-a; 2.Dxc5-C.
 1--Cxe3-b; 2.Dd2-D. 1--Cc3!
 1.Pb7? (2.Ac6-^{*}A)
^{*}1--Pxe5-a; 2.Cf6-B.
 1--Cxe3-b; 2.Taxd6-E. 1--Cb4!
 1.Tg6! (2.Cf6-^{*}B)
^{*}1--Pxe5-a; 2.Ac6-^{*}A.
 1--Cxe3-b; 2.Tgxd6-F.

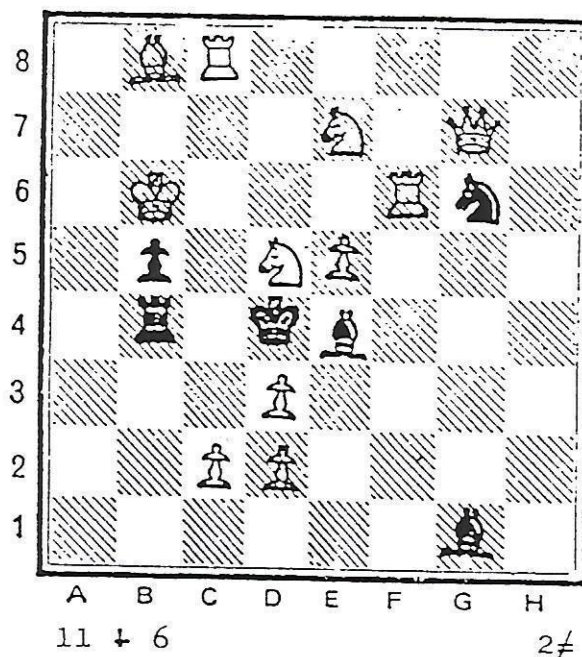
ESQUEMA

1. ? (2.-). 1--a/b; 2.C/D. !
 1. ? (2.^{*}A). 1--^{*}a/b; 2.^{*}B/E. !
 1. ! (2.^{*}B). 1--^{*}a/b; 2.^{*}A/F.

ZAGORUJKO - Conjunto total
del juego

^{*} LE GRAND

A. MOCHALKIN, S.SHEDEJ y A.POSTNIKOV
"Shakhmaty" 1989



Temas ZAGORUJKO - SALAZAR -
VLADIMIROV

- 1.Td6-^{*}E? (2.Cc6)
^{*}1--Axd3-a; 2.Cc3-A.
^{**}1--Cxe7-b; 2.Pe6-B. 1--Tc4!
 { 1.Pe6-B? (2.Txg6)
^{*}{ 1--Axd3-a; 2.Tf4-C.
 { 1--Cxe7-b; 2.Tf5-D. 1--Ah2!
 1.Cc3-^{*}A! (2.Ce2)
^{*}1--Axd3-a; 2.Td6-E.
 1--Cxe7-b; 2.Dxgl-F.

ESQUEMA

- 1.^{*}E? (2.-). 1--^{*}a/b; 2.^{*}A/B.^{**} !
^{*}1.B? (2.-). 1--a/b; 2.C/D. !
 1.^{*}A! (2.-). 1--^{*}a/b; 2.^{*}E/F.

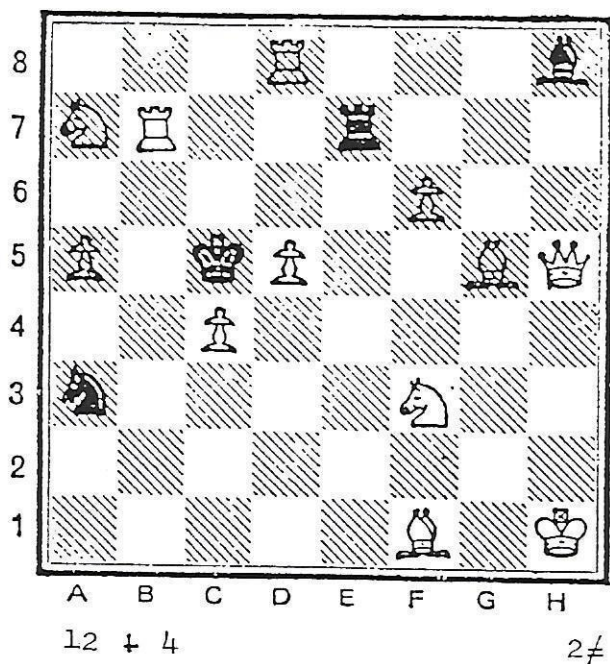
^{*} SALAZAR

^{**} VLADIMIROV

ZAGORUJKO - Conjunto total
del juego

V. TCHEPIJNY

1º Pr. "Shakhmaty" 1984



Temas ZAGORUJKO - VLADIMIROV

{ 1.Pd6-A? (2.Ae3-D)
1--Td7-c; 2.Af4-B.
1--Txb7-d; 2.Ad2-C. 1--Te2-a!

{ 1.Af4-B? (2.Ad6)
1--Td7-c; 2.Pd6-A.
1--Te2-a; 2.Tc8-E. 1--Te5-b!

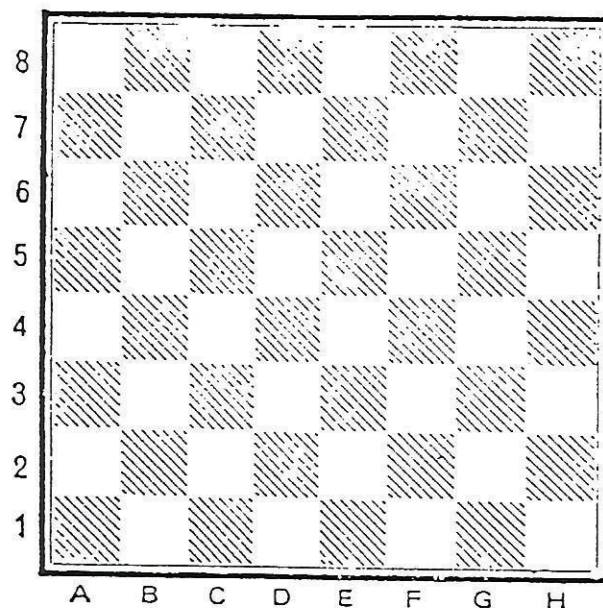
1.Ad2-D! (2.Ab4)
1--Txb7-b; 2.Ae3-D.
1--Te2-a ; 2.Tc7-F.

ESQUEMA

× 1.A? (2.D). 1--c/d; 2.B/C. a!
× 1.B? (2.-). 1--c/a; 2.A/E. b!
1.D! (2.-). 1--d/a; 2.F/D.

× VLADIMIROV

ZAGORUJKO - Conjunto total
del juego



COMBINACIONES DE CICLOS CON REVERSIONES EN DEFENSAS Y MATES QUE DETERMINAN LAS CONSIGUIENTES DENOMINACIONES DE LOS TEMAS DESARROLLADOS.

| Temas básicos | Ensayos | Amenaza | Defensas | Mates | Refu- tac. | Dia- eje |
|--|-----------|---------|----------|---------|---------------|-------------|
| | | | 1--/1-- | 2.-/2.- | | |
| <u>BANNY (1ª forma)</u> | 1.A? | - | - | C. | a! | |
| | 1.B? | - | - | C. | b! | |
| | SOL. 1.C! | - | a/b | B/A. | | 1 |
| <u>BANNY (2ª forma)</u> | 1.A? | - | b | C. | a! | |
| | 1.B? | - | a | C. | b! | 2 |
| | SOL. 1.C! | - | a/b | B/A. | | |
| <u>DJURASEVIC</u> | 1.A? | B. | a | C. | ! | 3 |
| | SOL. 1.B! | C. | a | A. | | |
| <u>DOMBROVSKI</u> | 1. ? | A. | - | - | a! | |
| | 1. ? | B. | - | - | b! | 4 |
| | SOL. 1. ! | - | a/b | A/B. | | |
| <u>DOMBROVSKI (cíclico)</u> | 1. ? | A/B. | - | - | a! | |
| | 1. ? | B/C. | - | - | b! | |
| | 1. ? | C/A. | - | - | c! | 5 |
| | SOL. 1. ! | - | a/b/c | C/A/B. | | |
| <u>EROCHIN (1ª forma)</u> | 1.A? | - | a | B. | ! | 6 |
| | SOL. 1. ! | B. | a | A. | | |
| <u>EROCHIN (2ª forma)</u> | 1. ? | A. | a | B. | ! | 7 |
| | SOL. 1.B! | - | a | A. | | |
| <u>EROCHIN (3ª forma)</u> | J.A. | | b | - | | |
| | 1. ? | C. | a | - | ! | |
| | 1. ? | A. | a | B. | ! | 8 |
| | SOL. 1.B! | - | a/b | A/C. | | |
| <u>HANNELIUS</u> | 1. ? | A. | - | - | a! | |
| | 1. ? | B. | - | - | b! | 9 |
| | SOL. 1. ! | - | a/b | B/A. | | |
| <u>HANNELIUS (doblado)</u> | J.A. | | a/b | A/B. | | 10 |
| | 1. ? | A/C. | - | - | b! | |
| | 1. ? | B/D. | - | - | a! | |
| | SOL. 1. ! | - | a/b | C/D. | | |
| <u>HANNELIUS (4 fases)</u> <u>- cíclico -</u> | 1. ? | A. | a | C. | b! | 11 |
| | 1. ? | B. | c | A. | a! | |
| | 1. ? | C. | b | B. | c! | |
| | SOL. 1. ! | - | c/b/a | A/B/C. | | |

.../...

COMBINACIONES DE CICLOS CON REVERSIONES EN DEFENSAS Y MATES QUE DETERMINAN LAS CONSIGUIENTES DENOMINACIONES DE LOS TEMAS DESARROLLADOS.

| Temas básicos | Ensayos | Amenaza | Defensas | Mates | Refu- tac. | Diagr ejemp |
|--|-----------|---------|----------|---------|---------------|----------------|
| | | | 1--/1-- | 2.-/2.- | | |
| <u>KISS</u> | 1.A? | - | a/b | B/C. | ! | 12. |
| | SOL. 1.B! | - | a/b | C/A. | | |
| <u>LACNY</u> | J.A. | | a/b/c | A/B/C. | | 13. |
| | SOL. 1. ! | - | a/b/c | B/C/A. | | |
| <u>LE GRAND</u> | 1. ? | A. | a | B. | ! | 14. |
| | SOL. 1. ! | B. | a | A. | | |
| <u>LE GRAND (inv.frecuencia)</u> | 1. ? | A. | a | B. | ! | 15. |
| | 1. ? | B. | a | A. | ! | |
| | SOL. 1. ! | - | b/c | A/B. | | |
| <u>LE GRAND (3 fases)</u> | 1. ? | A. | a | B. | ! | 16. |
| | 1. ? | C. | b | B. | ! | |
| | SOL. 1. ! | B. | a/b | A/C. | | |
| <u>LE GRAND (4 fases)</u> | 1. ? | A. | a | B. | ! | 17. |
| | 1. ? | B. | a | C. | ! | |
| | 1. ? | C. | a | D. | ! | |
| | SOL. 1. ! | D. | a | A. | | |
| <u>ODESSA</u> | 1. ? | A/B. | a/b | C/D. | ! | 18. |
| | SOL. 1. ! | C/D. | a/b | A/B. | | |
| <u>SEUDO-LE GRAND</u> | 1. ? | A. | a | B. | ! | 19. |
| | SOL. 1. ! | B. | b | A. | | |
| <u>SEUDO-LE GRAND (con dual-evitado)</u> | 1. ? | A(B?) | a | B. | ! | 20. |
| | SOL. 1. ! | B(A?) | b | A. | | |
| <u>SEUDO-LE GRAND (3 fases)</u> | 1. ? | A. | a | B. | ! | 21. |
| | 1. ? | B. | b | A. | ! | |
| | SOL. 1. ! | - | a/b | B/A. | | |
| <u>RUDENKO (1ª forma)</u> | 1. ? | A/B. | a/b | C/D. | ! | 22. |
| | 1. ! | C/D. | c/d | A/B. | | |
| <u>RUDENKO (2ª forma)</u> | 1. ? | A. | a | C. | ! | 23. |
| | 1. ? | B. | b | D. | ! | |
| | SOL. 1. ! | C/D. | c/d | A/B. | | |
| <u>SALAZAR</u> | 1.A? | - | a | B. | ! | 24. |
| | SOL. 1.B! | - | a | A. | | |

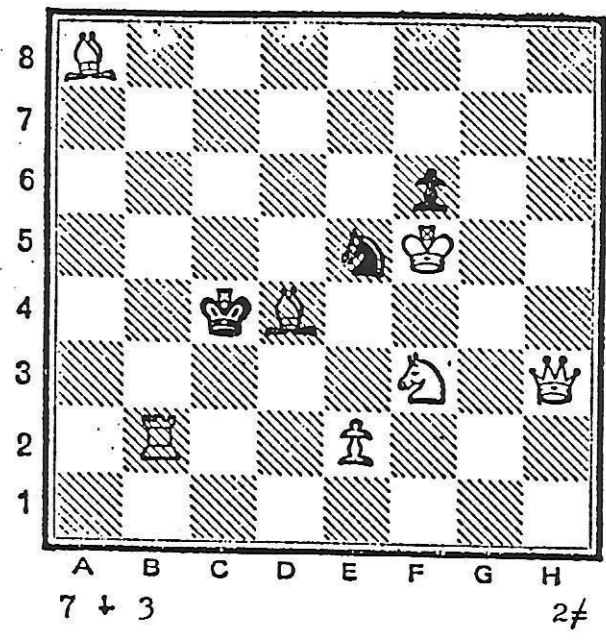
COMBINACIONES DE CICLOS CON REVERSIONES EN DEFENSAS Y MATES QUE DETERMINAN LAS CONSIGUIENTES DENOMINACIONES DE LOS TEMAS DESARROLLADOS.

| Temas básicos | Ensayos | Amenaza | Defensas | Mates | Refutac. | Diagr. ejemp. |
|--------------------------|-----------|---------|----------|---------|----------|---------------|
| | | | 1--/1-- | 2.-/2.- | | |
| <u>SALAZAR (doblado)</u> | 1.A? | - | a | B. | ! | 25. |
| | 1.B? | - | a | A. | ! | |
| | 1.C? | - | a | D. | ! | |
| | SOL. 1.D! | - | a | C. | | |
| <u>UKRANIA</u> | 1. ? | A. | a | B. | ! | 26. |
| | 1. ? | B. | a | C. | ! | |
| | SOL. 1. ! | C. | a | A. | | |
| <u>URANIA</u> | 1.A? | B. | - | - | ! | 27. |
| | 1.B? | A. | - | - | ! | |
| | SOL. 1. ! | - | - | A. | | |
| <u>VLADIMIROV</u> | 1.A? | - | - | - | a! | 28. |
| | 1.B? | - | - | - | b! | |
| | SOL. 1. ! | - | a/b | A/B. | | |

1.

D. BANNY

4^a M.H. "Gruzya" 1972



Tema BANNY (1^a forma)

1. Pe3-A?

1--C-juega; 2. Df1-C. 1--Cc6-a!

1. Pe4-B?

1--C-juega; 2. Df1-C. 1--Cxf3-b!

1. Df1-C! (2. Dc1)

1--Cc6-a; 2. Pe4-B

1--Cxf3-b: 2. Pe3-A

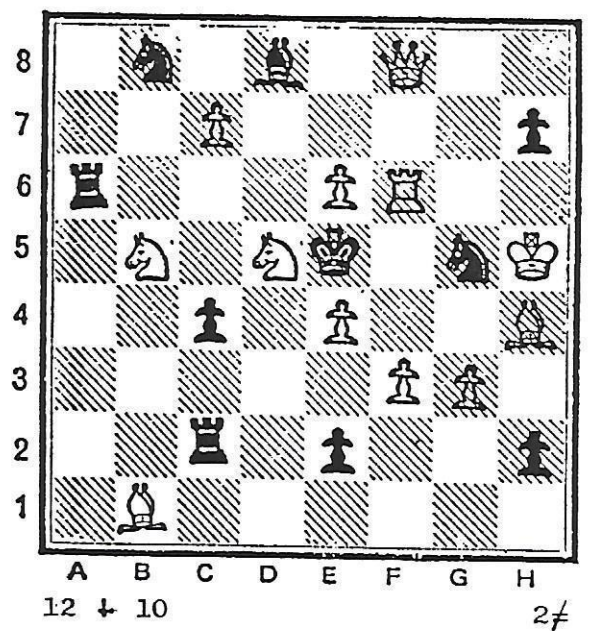
ESQUEMA

| | | | |
|---------------|---------|--------|----|
| 1. A? (2.--). | - | 2. C | a! |
| 1. B? (2.--). | - | 2. C | b! |
| 1. C! (2.--). | 1--a/b. | 2. B/A | |

2.

B. ZAPPAS

"The Problemist"



Tema BANNY (2^a forma)

1. Cd-c3-A? (2. Pf4)

1--Cxf3-b; 2. Dc5-C. 1--Axf6-a!

1. Cf4-B? 2. Tf5)

1--Axf6-a; 2. Dc5-C. 1--Cxf3-b!

1. Dc5-C! (2. Dd4)

1--Axf6-a; 2. Cf4-B

1--Cxf3-b; 2. Cd-c3-A

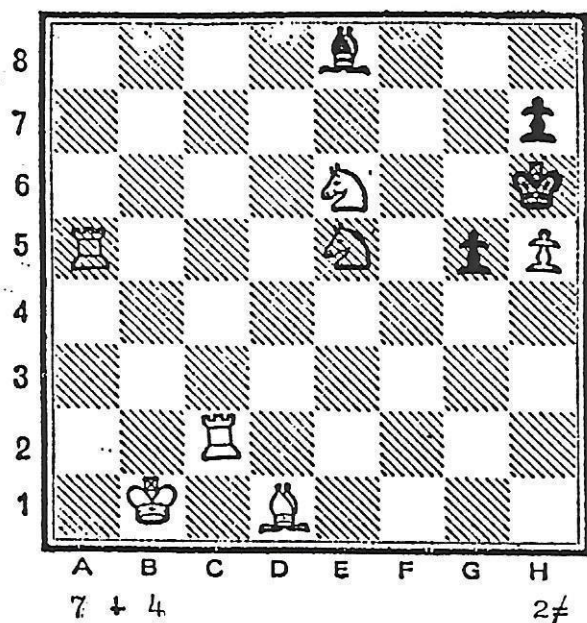
ESQUEMA

| | | | |
|---------------|---------|--------|----|
| 1. A? (2.--). | 1--b; | 2. C. | a! |
| 1. B? (2.--). | 1--a; | 2. C. | b! |
| 1. C! (2.--). | 1--a/b. | 2. B/A | |

3.

J. ROTENBERG, J.M.LOSTAU y
M. CAILLAUD

Pr. Esp. "Phenix" 1988



Tema DJURASEVIC

1.Pxg6 a.p.-A? (2.Th2-B)

1--Axc6-a; 2.Cg4-C.

pero la captura al paso
no está justificada!

1.Th2-B! (2.Cg4-C)

1--Ag6+-a; 2.Pxg6-A

ESQUEMA

1.A? (2.B). 1--a; 2.C.

!

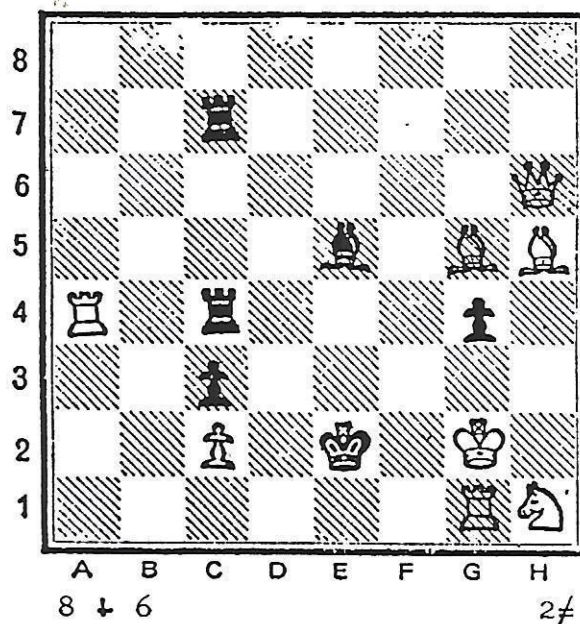
1.B! (2.C). 1--a; 2.A

4.

33

A. BUJANOV

"Novi Temi" 1982



Tema DOMBROVSKI

1.Da6? (2.Axc4-A).

1--Af4-a!

1.De6? (2.Cg3-B).

1--Tf4-b!

1.Acl! (2.De3)

1--Af4-a; 2.Axc4-A

1--Tf4-b; 2.Cg3-B

ESQUEMA

1. ? (2.A). - - a!

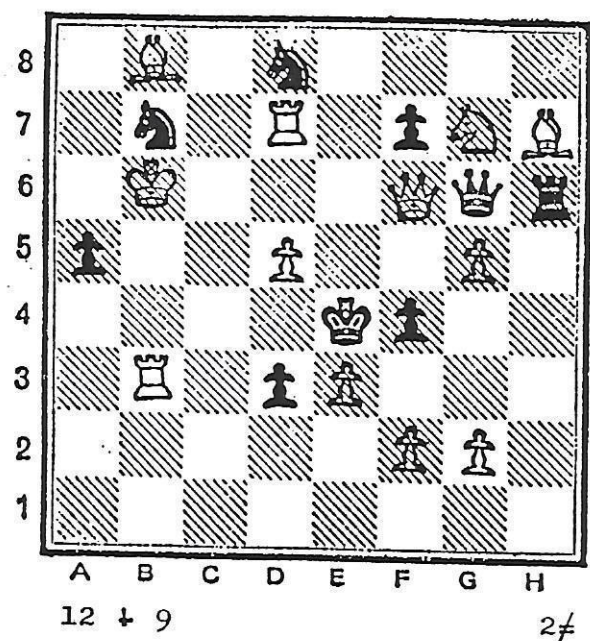
1. ? (2.B). - - b!

1. ! (2.--). 1--a/b; 2.A/B

5.

J. RETTER

1º Pr. "Jubileo E. Petite"



Tema DOMBROVSKI (cíclico)

- 1. Ce6? (2. De5-A/Dxf4-B). 1--Cd6-a!
- 1. Td6? (2. Dxf4-B/Dd4-C). 1--Ce6-b!
- 1. Ad6? (2. Dd4-C/De5-A). 1--Cc6-c!
- 1. Tc3! (2. Tc4)
- 1--Cd6-a; 2. Dd4-C
- 1--Ce6-b; 2. De5-A
- 1--Cc6-c; 2. Dxf4-B

ESQUEMA

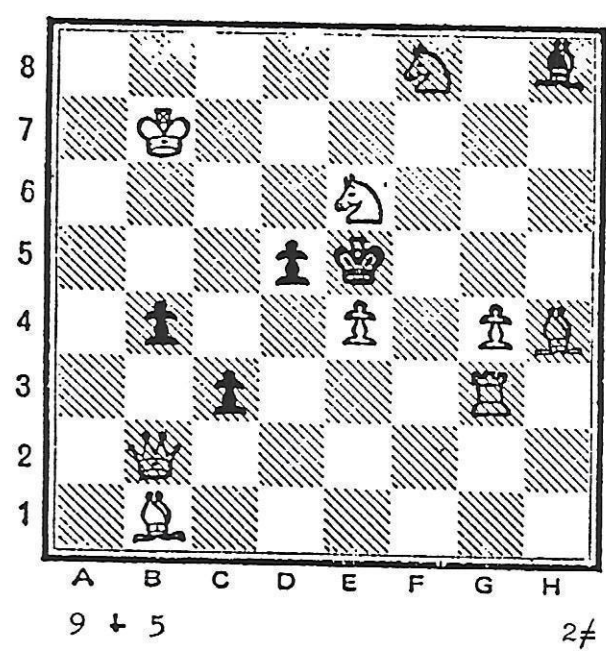
- 1. ? (2. A/B). - - a!
- 1. ? (2. B/C). - - b!
- 1. ? (2. C/A). - - c!
- 1. ! (2. --). 1--a/b/c; 2. C/A/B

6.

34

J. ANTONOV y S. LODKORITOV

3ª Pl. "Match der Heldensteden" 1985



Tema EROCHIN (1ª forma)

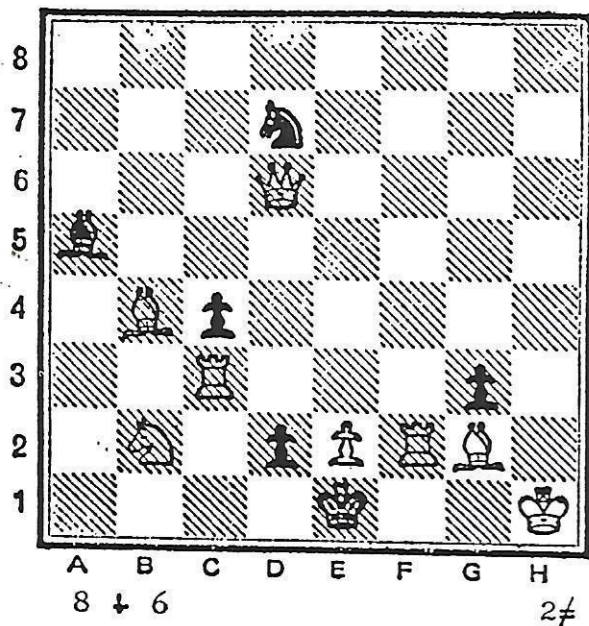
- 1. Td3-A (2. Txd5)
- 1--Pxe4-a; 2. Dh2-B. 1--Pd4!
- 1. Txc3! (2. Dh2-B)
- 1--Pxe4-a; 2. Td3-A

ESQUEMA

- 1. A? (2. --). 1--a; 2. B. !
- 1. ! (2. B). 1--a; 2. A.

7.

A. DOMBROVSKI

1-2º Pr. "De Komsomol Stille Oceaan"
1985

Tema EROCHIN (2ª forma)

1. Pe4? 2. Dxd2-A)

1--Pxf2-a; 2. Te3-B.

1--Pd1D!

1. Te3-B! (2. Tf1)

1--Pxf2-a; 2. Dxd2-A.

ESQUEMA

1. ? (2.A). 1--a; 2.B.

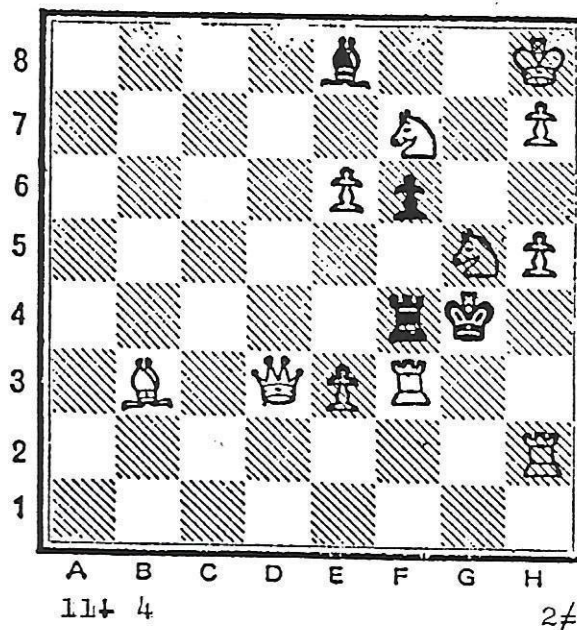
1.B! (2.--). 1--a; 2.A.

8.

35

J. ANTONOV

"Argentijns k-s" 1985



Tema EROCHIN (3ª forma)

J.A.: 1--Tf5-b; 2. Dxf5

1. Pe4? (2. Tg3-C)

1--Txf3-a; 2. Dxf3.

1--Tf5-b!

1. Dg6? (2. Ch6-A)

1--Txf3-a; 2. Ce4-B.

1--Axf7!

1. Ce4-B! (2. Txf4)

1--Txf3-a; 2. Ch6-A

1--Tf5-b; 2. Tg3-C

ESQUEMA

J.A.: 1--b; 2. -

1. ? (2.C). 1--a; 2. -

b!

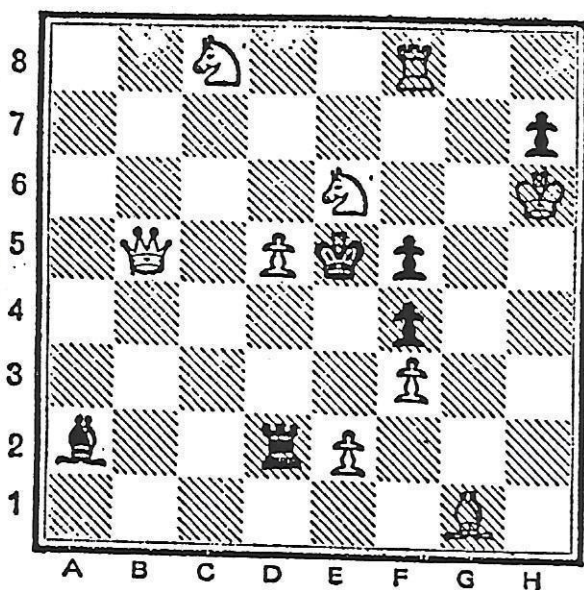
1. ? (2.A). 1--a; 2.B.

!

1.B! (2.-). 1--a/b.; 2.A/C

9.

A. GRIN
"Shakmaty" 1980



9 + 6

2#

Tema HANNELIUS

1. Cc7? (2. De8-A). 1--Axd5-a!

1. Cxf4? (2. Db8-B). 1--Txd5-b!

1. Cc5! (2. Cd7)

1--Axd5-a; 2. Db8-B

1--Txd5-b; 2. De8-A

Combinado con defensas: Nietveld

ESQUEMA

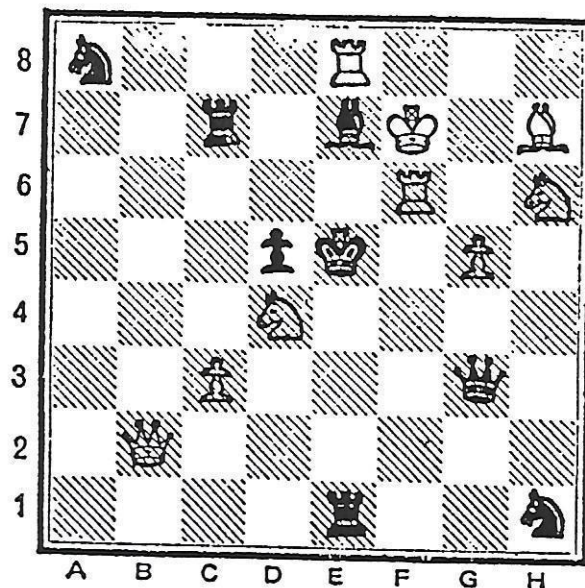
1. ? (2.A). - - a!

1. ? (2.B). - - b!

1. ! (2.-). 1--a/b; 2.B/A

10.

V. MELNITSCHANKO y V. ARCHAKOV
3º Pr. "Chess Life" 1988



9 + 8

2#

Tema HANNELIUS (doblado)

J.A.:

1--Txc3-a; 2. Cc6-A

1--Dxc3-b; 2. Cf3-B

1. Db8? (2. Cc6-A/Txe7-C). 1--Dxc3-b!

1. Dh2? (2. Cf3-B/Cg4-D). 1--Txc3-a!

1. Db4! 2. Dd6)

1--Txc3-a; 2. Txe7-C

1--Dxc3-b; 2. Cg4-D

ESQUEMA

J.A.: 1--a/b; 2.A/B.

1. ? (2.A/C). - - b!

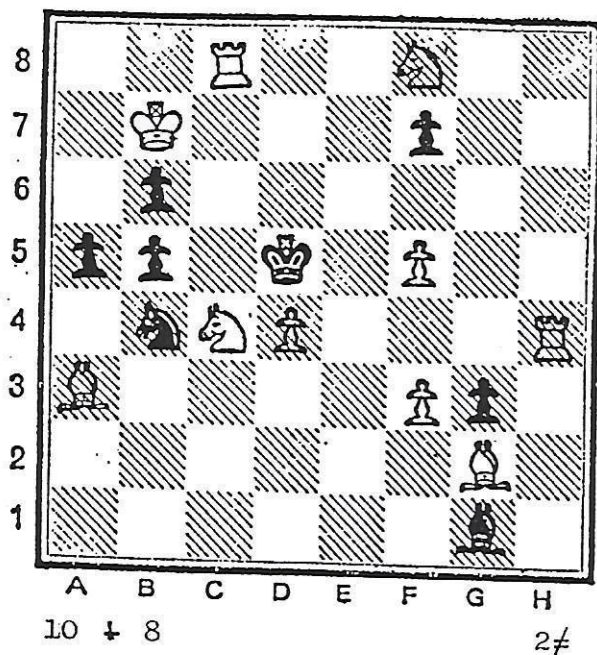
1. ? (2.B/D). - - a!

1. ! (2.--). 1--a/b; 2.C/D

11.

M. PARRINELLO

"Die Schwalbe" 1984



Tema HANNELIUS (4 fases-cíclico)

- 1.Ab2? (2.Pf4-A)
 1--Pxc4-a; 2.Td8-C. 1--Cc6-b!
 1.Tc6? (2.Cxb6-B)
 1--Axd4-c; 2.Pf4-A. 1--Pxc4-a!
 1.Af1? (2.Td8-C)
 1--Cc6-b; 2.Cxb6-B. 1--Axd4-c!
 1.Ch7! (2.Cf6)
 1--Axd4-c; 2.Pf4-A
 1--Cc6-b ; 2.Cxb6-B
 1--Pxc4-a; 2.Td8-C

ESQUEMA

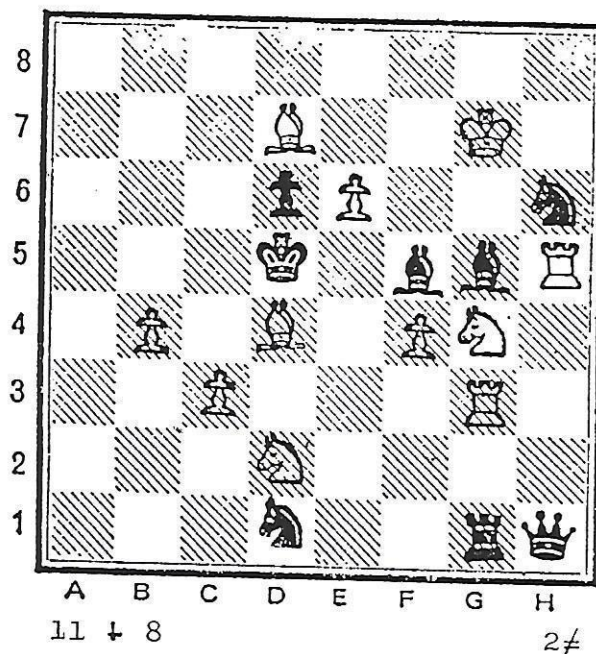
1. ? (2.A). 1--a; 2.C. b!
 1. ? (2.B). 1--c; 2.A. a!
 1. ? (2.C). 1--b; 2.B. c!
 1. ! (2.-). 1--c/b/a; 2.A/B/C

12.

34

I. KISS

1º-2º Pr. "Pravda-Tirnavia" 1983



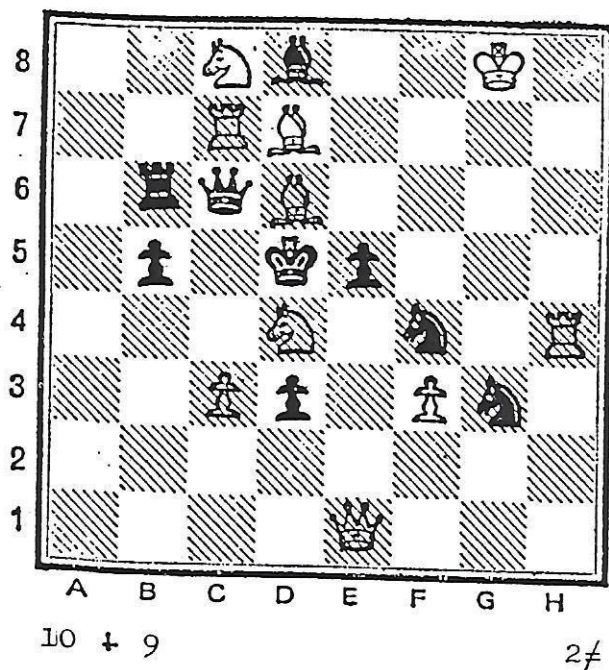
Tema KISS

- 1.Af6-A? (2.Pc4)
 1--Ad3-a ; 2.Txd3-B.
 1--Axf6+-b; 2.Cxf6-C. 1--De4!
 1.Td3-B! 2.Pc4)
 1--Axd3-a; 2.Cf6-C.
 1--Af6+-b; 2.Axf6-A.

ESQUEMA

- 1.A? (2.-). 1--a/b; 2.B/C. !
 1.B! (2.-). 1--a/b; 2.C/A.

A. KUZOVKOV
"Hlas-Ludu" 1982



Tema LACNY

J.A.

1--Cg2-a ; 2.Ae6-A

1--Dxc3-b ; 2.Dxe5-B

1--Rc4-c ; 2.Cxb6-C

1.Cf5! (2.Ce3)

1--Cg2-a ; 2.Dxe5-B

1--Dxc3-b ; 2.Cxb6-C

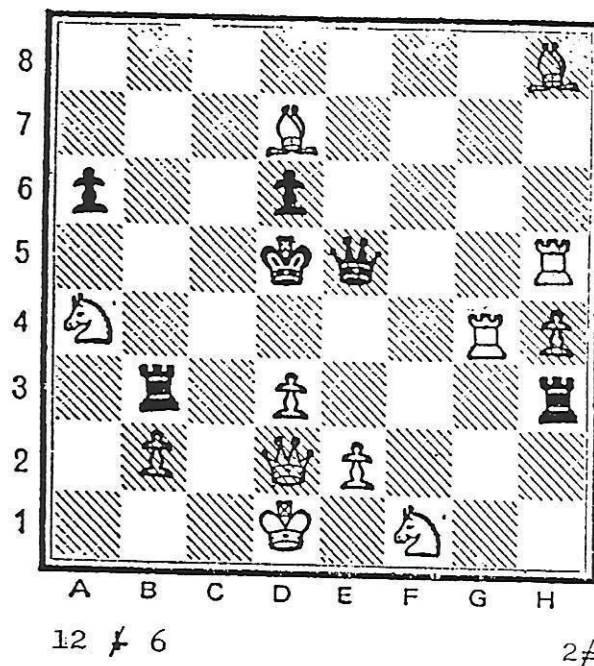
1--Rc4-c ; 2.Ae6-A

ESQUEMA

J.A.: 1--a/b/c ; 2.A/B/C

1. ! (2.-). 1--a/b/c ; 2.B/C/A

H. GOCKEL
19 Pr. "Schach-Aktiv" 1984



Tema LE GRAND

1.Pe3? 2.Td4-A)

1--Dxh5-a ; 2.Pe4-B.

1--Tb4!

1.Tc4! (2.Pe4-B)

1--Dxh5-a ; 2.Td4-A

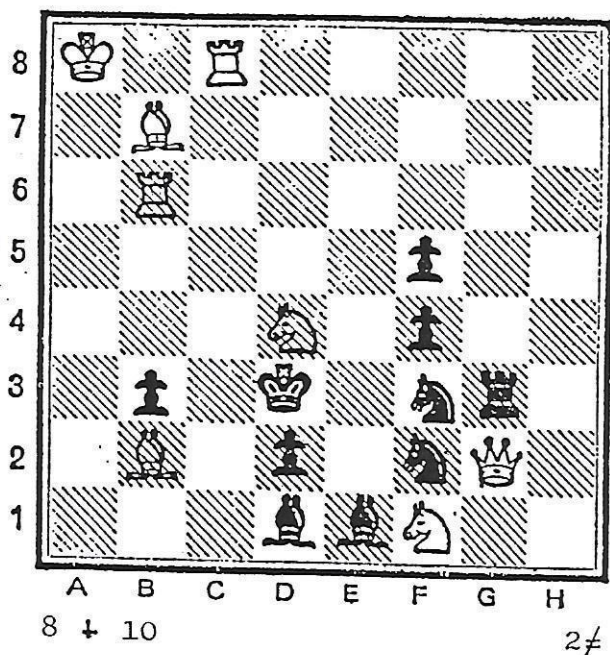
ESQUEMA

1. ? (2.A). 1--a ; 2.B. !

1. ! (2.B). 1--a ; 2.A.

15.

A. KUZOVKOV
"Die Schwalbe" 1984



Tema LE GRAND (inversion
secuencia)

- 1.Te6?(2.Aa6-A)
1--Cxd4-a; 2.Tc3-B. 1--Ce5!
1.Td6? (2.Tc3-B)
1--Cxd4-a; 2.Aa6-A. 1--Tg8!
1.Ce2! (2.Cf4)
1--Rxe2-b; 2.Aa6-A
1--Ch3- c; 2.Tc3-B

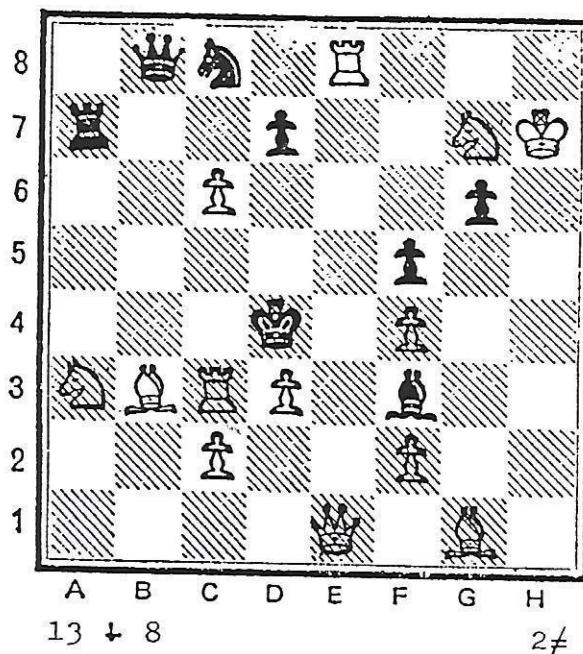
ESQUEMA

1. ? (2.A). 1-- a; 2. B. !
1. ? (2.B). 1-- a; 2. A. !
1. ! (2.-). 1--b/c; 2.A/B.

16.

39

C. OULLET
"The Problemist" 1986



Tema LE GRAND (3 fases)

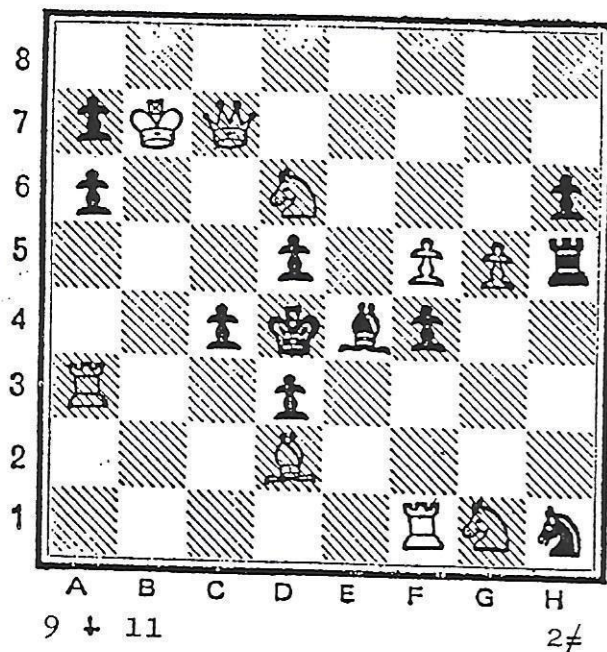
- 1.Pc7? (2.De5-A)
1--Pd6-a; 2.Ce6-B. 1--Ta5!
1.Af7? (2.Tc4-C)
1--Pd5-b; 2.Ce6-B. 1--Ta4!
1.Td8! (2.Ce6-B)
1--Pd6-a; 2.De5-A
1--Pd5-b; 2.Tc4-C

ESQUEMA

1. ? (2.A). 1-- a; 2. B. !
1. ? (2.C). 1-- b; 2. B. !
1. ! (2.B). 1--a/b; 2.A/C.

17.

V. POPOV
"Sachove Umeni" 1988



Tema LE GRAND (4 fases)

- 1.Txf4? (2.Cf3-A)
 1--Re5-a; 2.Cb5-B. 1--Th3!
 1.Txa6? (2.Cb5-B)
 1--Re5-a; 2.Dg7-C. 1--Ag2!
 1.Ta5? (2.Dg7-C)
 1--Re5-a; 2.Ac3-D. 1--Txxg5!
 1.Tel! (2.Ac3-D)
 1--Re5-a; 2.Cf3-A

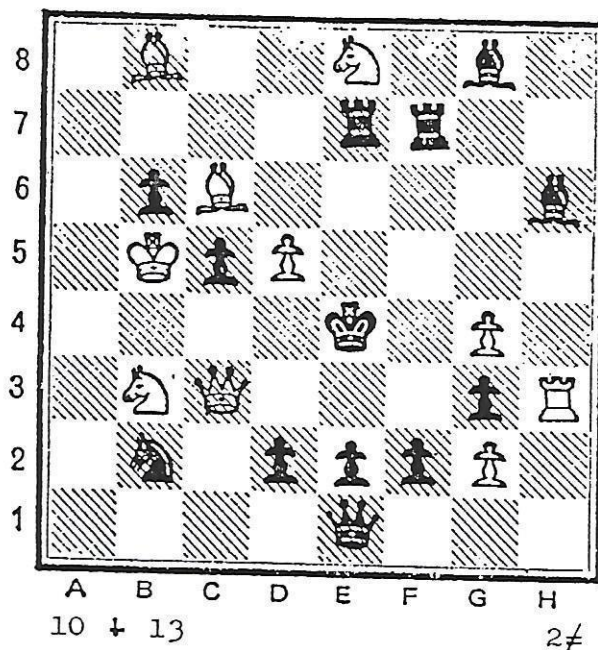
ESQUEMA

1. ? (2.A). 1--a; 2.B. !
 1. ? (2.B). 1--a; 2.C. !
 1. ? (2.C). 1--a; 2.D. !
 1. ! (2.D). 1--a; 2.A.

18.

40

Z. GAVRILOVSKI
Inédito



Tema ODESSA

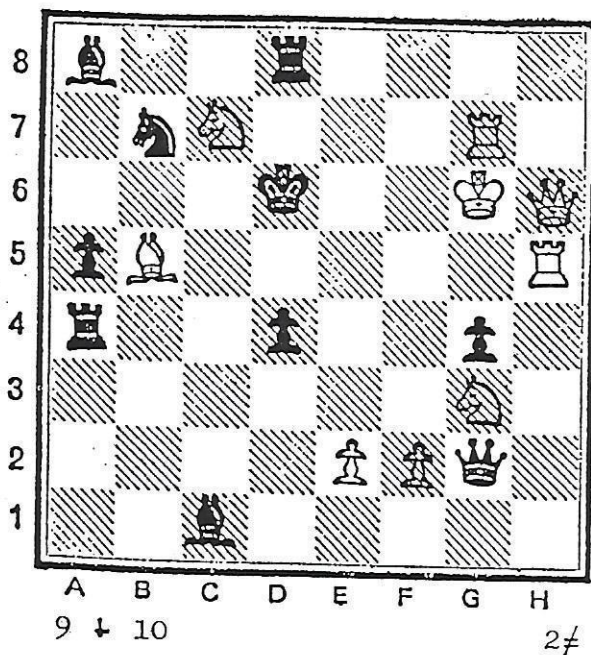
- 1.Af4? (2.De3-A/Df3-B)
 1--Txf4-a; 2.Cd6-C.
 1--Axf4-b; 2.Pd6-D. 1--Rxf4!
 1.Dg3! (2.Cd6-C/Pd6-D)
 1--Tf4-a; 2.De3-A
 1--Af4-b; 2.Df3-B

ESQUEMA

1. ? (2.A/B). 1--a/b; 2.C/D. !
 1. ! (2.C/D). 1--a/b.; 2.A/B.

19.

H. GOCKEL

3^a M.H. "Memorial C. Mansfield" 1987

Tema PSEUDO - LE GRAND

1.Pe4? (2.Td5-A)

1--Pdxe4 a.p.-a; 2.Rg5-B. 1--Ag5!

1.Pf4! (2.Rg5-B)

1--Pgxf4 a.p.-b; 2.Td5-A

ESQUEMA

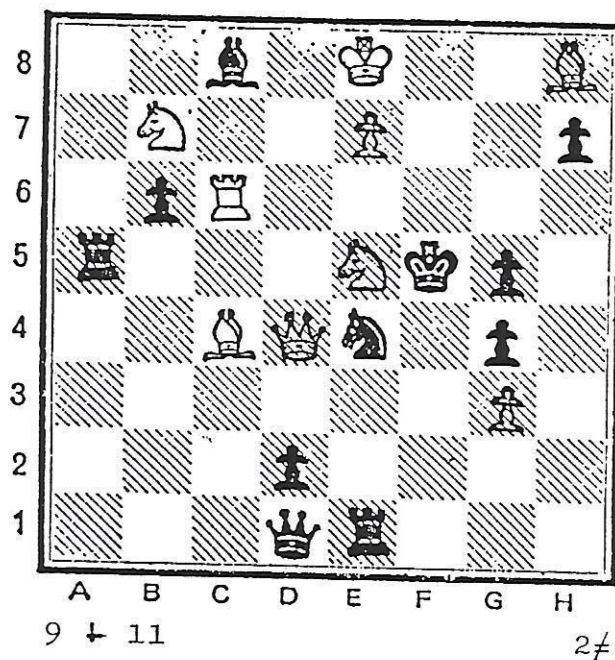
1. ? (2.A). 1--a; 2.B. !

1. ! (2.B). 1--b; 2.A.

20.

D. SHIRE

"The Problemist" 1989

Tema PSEUDO - LE GRAND
(con dual-evitado)

1.Dd3? (2.Cd6-A - no 2.Tf6-B?)

1--Txe5-a; 2.Tf6-B. 1--Td5!

1.Ad3! (2.Tf6-B - no 2.Cd6-A?)

1--Ae6-b; 2.Cd6-A

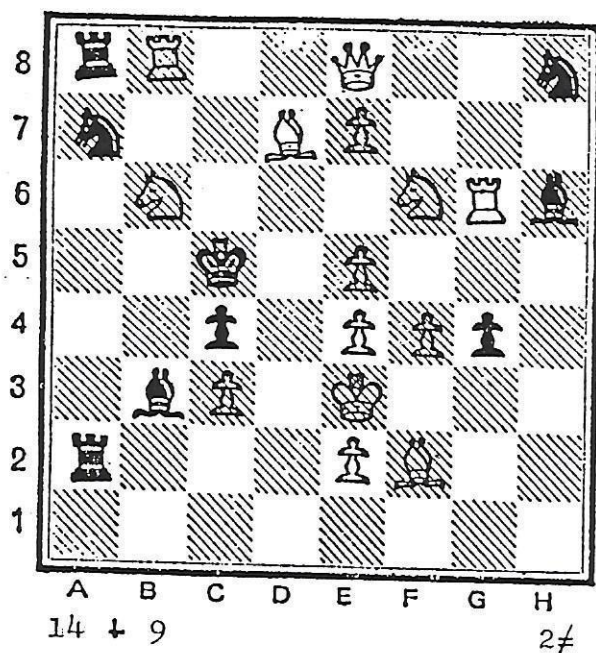
ESQUEMA

1. ? (2.A.- no 2.B?). 1--a; 2.B. !

1. ! (2.B.- no 2.A?). 1--b; 2.A.

21.

R. VAN DOOREN
"The Problemist" 1988



Tema PSEUDO - LE GRAND (3 fases)

1. Ab5? (2. Cb-d7-A)
 1--Cxb5-a; 2. Cf-d7-B. 1--Txb8!
 1. Ac6? (2. Cf-d7-B)
 1--Cxc6-b; 2. Cb-d7-A. 1--Cxc6!
 1. Axc4! (2. Rf3)
 1--Cb5-a; 2. Cf-d7-B
 1--Cc6-b; 2. Cb-d7-A

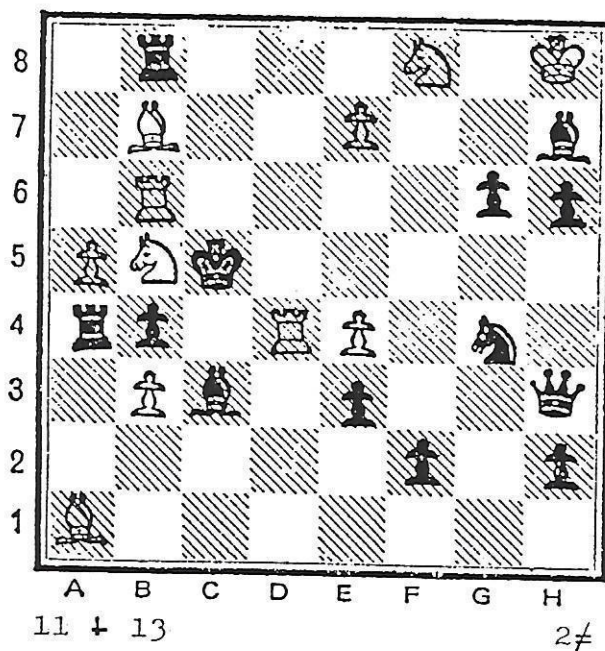
ESQUEMA

1. ? (2.A). 1-- a; 2; B. !
 1. ? (2.B). 1-- b; 2. A. !
 1. ! (2.-). 1--a/b; 2.B/A.

22.

42

H. PRINS
"The Problemist" 1986



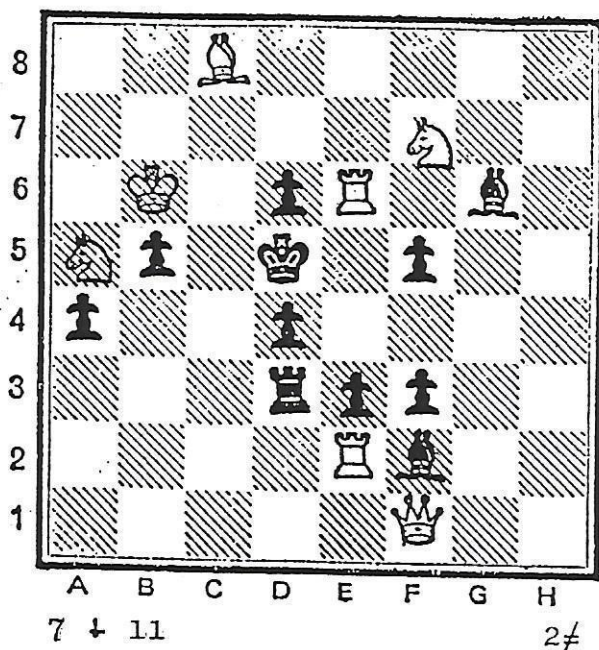
Tema RUDENKO (1ª Forma)

1. Pe5? (2. Td5/Tc4-B)
 1--Txb7-a; 2. Ce6-C.
 1--Ag8-b ; 2. Cd7-D. 1--Txa5!
 1. Rg7! (2. Ce6-C/Cd7-D)
 1--Ce5-c; 2. Td5-A.
 1--Cf6-d; 2. Tc4-B.

ESQUEMA

1. ? (2.A/B). 1--a/b; 2.C/D. !
 1. ! (2.C/D). 1--c/d; 2.A/B.

S. BURMISTROV
"Probleemblad" 1984



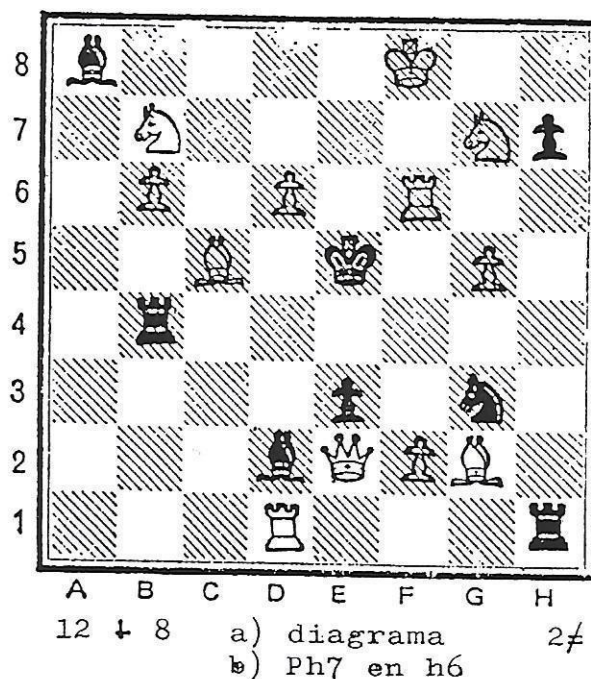
Tema **RUDENKO** (2ª forma)

1. D**b**1? (2. Dxb5-A)
 1--Tb3-a; 2. Txd6-C. 1--Pb4!
 1. Dh3? (2. Dxf3-B)
 1--Pf4-b; 2. Ab7-D. 1--Ag3!
 1. T2xe3! (2. Txd6-C/Ab7-D)
 1--Txe3-c; 2. Dxb5-A
 1--Axe3-d; 2. Dxf3-B

ESQUEMA

1. ? (2.A). 1-- a; 2. C. !
 1. ? (2.B). 1-- b; 2. D. !
 1. ! (2.C/D). 1--c/d; 2.A/B.

E. PETITE
"The Problemist" 1987



Tema **SALAZAR**

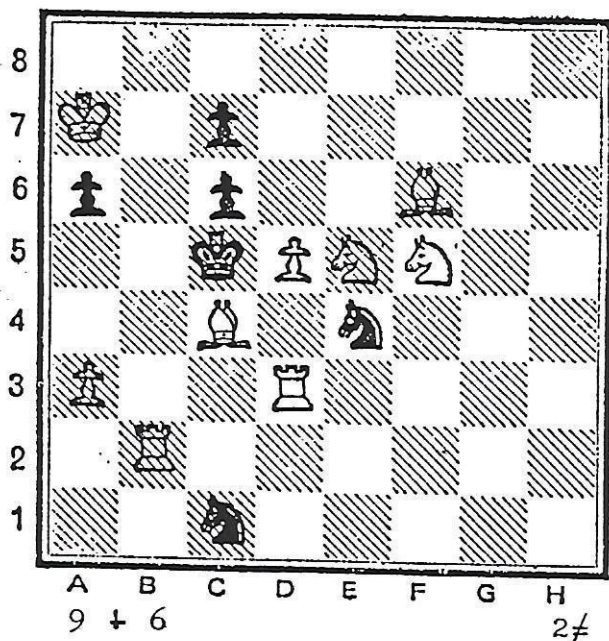
- a)
 1. Axe3-A? (2. Te6)
 1--Te4-a; 2. Db5-B. 1--Th6!
 1. Db5-B! (2. De8)
 1--Te4-a; 2. Axe3-A.
 b)
 1. Db5-B? (2. De8)
 1--Te4-a; 2. Axe3-A. 1--Pxg5
 1. Axe3-A! (2. Te6)
 1--Te4-a; 2. Db5-B.

ESQUEMA

1. A? (2.-). 1--a; 2. B. !
 1. B! (2.-). 1--a; 2. A.

25.

H. PRINS
"The Problemist" 1987



Tema SALAZAR (doblado)

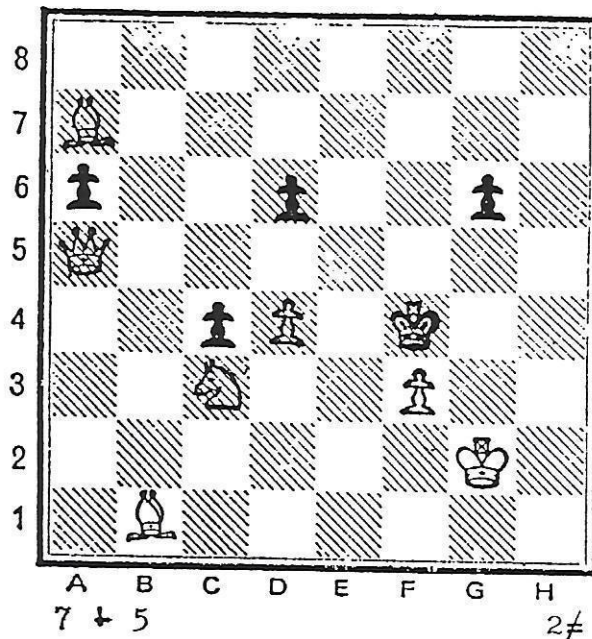
- 1.Tc3-A? (2.Cd7)
 1--Cxf6-a; 2.Aa2-B. 1--Pxd5!
 1.Aa2-B? (2.Cd7)
 1--Cxf6-a; 2.Tc3-A. 1--Cb3!
 1.Axa6-C? (2.Cd7)
 1--Cxf6-a; 2.Tc2-D. 1--Cxd3!
 1.Tc2-D! (2.Cd7)
 1--Cxf6-a; 2.Axa6-C

ESQUEMA

- 1.A? (2.-). 1--a; 2.B. !
 1.B? (2.-). 1--a; 2.A. !
 1.C? (2.-). 1--a; 2.D. !
 1.D! (2.-). 1--a; 2.C.

26.

E. KLEMANIC
"Probleemblad" 1984



Tema UKRANIA

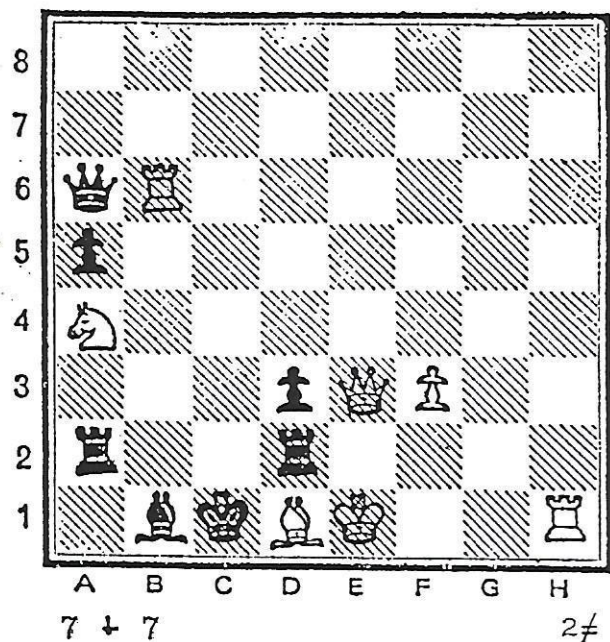
- 1.Ce4? (2.Dg5-A)
 1--Re3-a; 2.Dd2-B. 1--Pd5!
 1.Da2? (2.Dd2-B)
 1--Re3-a; 2.Cd5-C. 1--Rg5!
 1.Dd8! (2.Cd5-C)
 1--Re3-a; 2.Dg5-A

ESQUEMA

1. ? (2.A). 1--a; 2.B. !
 1. ? (2.B). 1--a; 2.C. !
 1. ! (2.C). 1--a; 2.A.

27.

B. DJURASEVIC
"The Problemist" 1990



Tema URANIA

1. O-O-A? (2. Ab3-B). 1--Ac2!

1. Ab3-B? (2. O-O-A). 1--Ac2!

1. Ac2! (2. Dxd2)
1--Txc2; 2. O-O-A

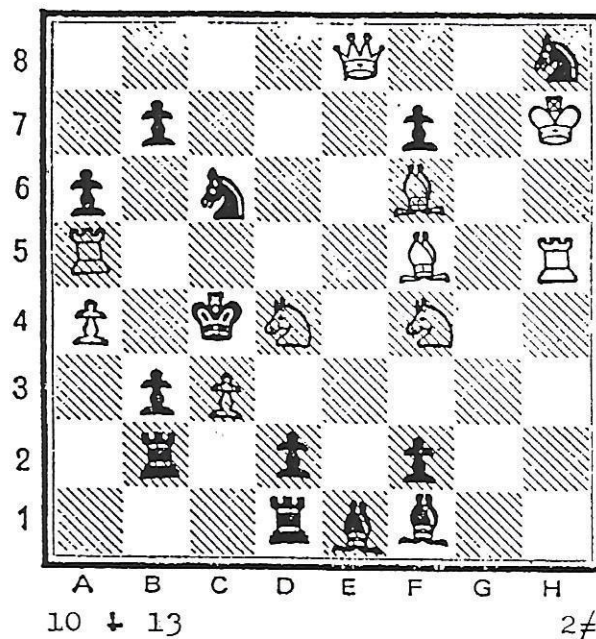
ESQUEMA

| | | | |
|---------------|---|----|---|
| 1. A? (2. B). | - | - | ! |
| 1. B? (2. A). | - | - | ! |
| 1. ! (2. -). | - | A. | |

28.

45

H. PRINS
7^a M.H. "Probleemblad" 1987



Tema VLADIMIROV

1. Cd-e6-A?, Cxa5-a!

1. Cd-e2-B?, Ce5-b!

1. De4! (2. Cxc6)
1--Cxa5-a; 2. Cd-e6-A
1--Ce5-b ; 2. Cd-e2-B

ESQUEMA

| | |
|---------------|-----------------|
| 1. A? (2. -). | a! |
| 1. B? (2. -). | b! |
| 1. ! (2. -). | 1--a/b; 2. A/B. |