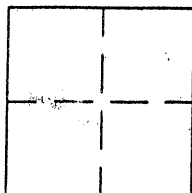


# CORNER RECORD

BK 77 PG 47APN No. 431 - 008 - 68 - (Optional)Document Number CR 7898City of HAY WARDCounty of ALAMEDA, CaliforniaBrief Legal Description Lot 3 / Lot 4 Block 104, Central Tract - 24 Maps 24

## CORNER TYPE

Government Corner ☐ Control ☐  
Meander ☐ Property ☒  
Rancho ☐ Other ☐  
Date of Survey SEPT. 16, 2015

## COORDINATES (Optional)

N. \_\_\_\_\_  
E. \_\_\_\_\_  
Zone \_\_\_\_\_ Datum \_\_\_\_\_  
Elev. \_\_\_\_\_

Corner - Left as found ☐ Found and tagged ☐ Established ☒ Reestablished ☐ Rebuilt ☐

In compliance with Section 8771 of the Professional Land Surveyors' Act, this corner record is being filed to ESTABLISH \_\_\_\_ / REESTABLISH \_\_\_\_ the position of an existing monument PRIOR \_\_\_\_ / SUBSEQUENT \_\_\_\_ to street or highway reconstruction. (Use this portion only when applicable.)

Identification and type of corner found: Evidence used to identify or procedure used to establish or reestablish the corner:  
SEE MAP

A description of the physical condition of the monument as found and as set or reset: \_\_\_\_\_

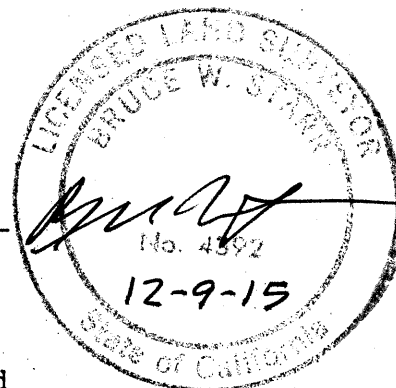
SEE MAP

## SURVEYOR'S STATEMENT

This Corner Record was prepared by me or under my direction in conformance with

the Land Surveyors' Act on Sept. 16, 2015

Signed [Signature] L.S. ~~20~~ 4392 Number 4392



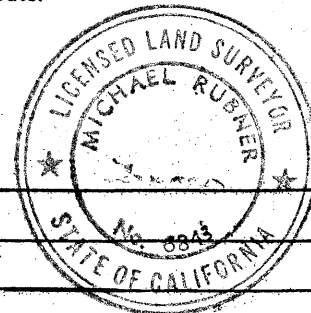
## COUNTY SURVEYOR'S STATEMENT

This Corner Record was received 23 DECEMBER, 2015 and examined

and filed 14 MARCH, 2016

Signed Michael Rubner Title County Surveyor

Expiration  
Date: \_\_\_\_\_

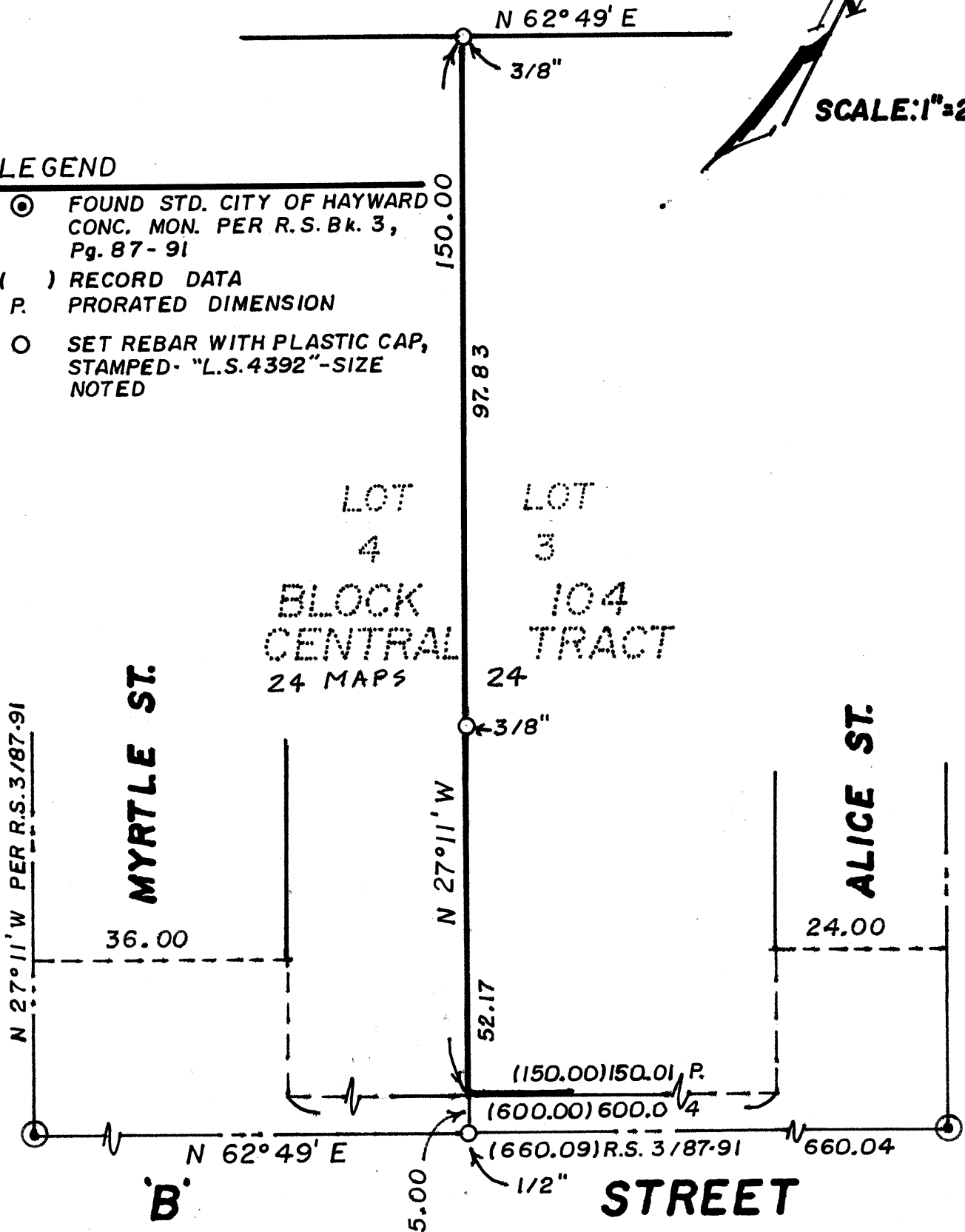


County Surveyor's Comment \_\_\_\_\_

# LEGEND

- ⊙ FOUND STD. CITY OF HAYWARD  
CONC. MON. PER R.S. Bk. 3,  
Pg. 87 - 91
- ( ) RECORD DATA
- P. PRORATED DIMENSION
- SET REBAR WITH PLASTIC CAP,  
STAMPED - "L.S. 4392" - SIZE  
NOTED

SCALE: 1"=20'



431-8-68